

BCAM (A-4): sc-514758

BACKGROUND

Cell adhesion molecules (CAMs) influence cell growth, differentiation, embryogenesis, immune response and cancer metastasis by networking information from the extracellular matrix to the cell. Regulation of neuronal synaptic adhesion by CAMs has proven important for learning and memory. Proper embryonic morphogenic development is also heavily dependent on the regulation of cell adhesion molecules. Mutation of CAM genes has been linked to several forms of cancer, effecting tumor growth and metastasis. Lutheran blood group glycoprotein, also designated BCAM cell surface glycoprotein or auberger B antigen, plays a role in intracellular signaling. It is a widely expressed protein but the highest level of expression is in pancreas tissue.

REFERENCES

1. Campbell, I.G., et al. 1994. Molecular cloning of the BCAM cell surface glycoprotein of epithelial cancers: a novel member of the immunoglobulin superfamily. *Cancer Res.* 54: 5761-5765.
2. Parsons, S.F., et al. 1995. The Lutheran blood group glycoprotein, another member of the immunoglobulin superfamily, is widely expressed in human tissues and is developmentally regulated in human liver. *Proc. Natl. Acad. Sci. USA* 92: 5496-5500.
3. Hines, P.C., et al. 2003. Novel epinephrine and cyclic AMP-mediated activation of BCAM/Lu-dependent sickle (SS) RBC adhesion. *Blood* 101: 3281-3287.
4. Zhang, H., et al. 2003. Identification and quantification of N-linked glycoproteins using hydrazide chemistry, stable isotope labeling and mass spectrometry. *Nat. Biotechnol.* 21: 660-666.

CHROMOSOMAL LOCATION

Genetic locus: Bcam (mouse) mapping to 7 A3.

SOURCE

BCAM (A-4) is a mouse monoclonal antibody specific for an epitope mapping between amino acids 88-107 near the N-terminus of BCAM of mouse origin.

PRODUCT

Each vial contains 200 µg IgG₁ kappa light chain in 1.0 ml of PBS with < 0.1% sodium azide and 0.1% gelatin.

BCAM (A-4) is available conjugated to agarose (sc-514758 AC), 500 µg/0.25 ml agarose in 1 ml, for IP; to HRP (sc-514758 HRP), 200 µg/ml, for WB, IHC(P) and ELISA; to either phycoerythrin (sc-514758 PE), fluorescein (sc-514758 FITC), Alexa Fluor® 488 (sc-514758 AF488), Alexa Fluor® 546 (sc-514758 AF546), Alexa Fluor® 594 (sc-514758 AF594) or Alexa Fluor® 647 (sc-514758 AF647), 200 µg/ml, for WB (RGB), IF, IHC(P) and FCM; and to either Alexa Fluor® 680 (sc-514758 AF680) or Alexa Fluor® 790 (sc-514758 AF790), 200 µg/ml, for Near-Infrared (NIR) WB, IF and FCM.

Blocking peptide available for competition studies, sc-514758 P, (100 µg peptide in 0.5 ml PBS containing < 0.1% sodium azide and 0.2% stabilizer protein).

Alexa Fluor® is a trademark of Molecular Probes, Inc., Oregon, USA

APPLICATIONS

BCAM (A-4) is recommended for detection of mature LU and BCAM precursor of mouse origin by Western Blotting (starting dilution 1:100, dilution range 1:100-1:1000), immunoprecipitation [1-2 µg per 100-500 µg of total protein (1 ml of cell lysate)], immunofluorescence (starting dilution 1:50, dilution range 1:50-1:500) and solid phase ELISA (starting dilution 1:30, dilution range 1:30-1:3000).

Suitable for use as control antibody for BCAM siRNA (m): sc-60264, BCAM shRNA Plasmid (m): sc-60264-SH and BCAM shRNA (m) Lentiviral Particles: sc-60264-V.

Molecular Weight of major BCAM isoform: 85 kDa.

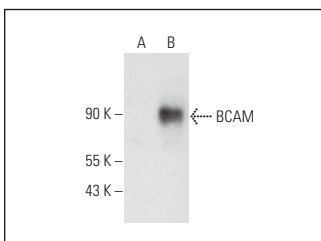
Molecular Weight of minor BCAM isoform: 78 kDa.

Positive Controls: BCAM (m): 293T Lysate: sc-126494.

RECOMMENDED SUPPORT REAGENTS

To ensure optimal results, the following support reagents are recommended: 1) Western Blotting: use m-IgGκ BP-HRP: sc-516102 or m-IgGκ BP-HRP (Cruz Marker): sc-516102-CM (dilution range: 1:1000-1:10000), Cruz Marker™ Molecular Weight Standards: sc-2035, UltraCruz® Blocking Reagent: sc-516214 and Western Blotting Luminol Reagent: sc-2048. 2) Immunoprecipitation: use Protein A/G PLUS-Agarose: sc-2003 (0.5 ml agarose/2.0 ml). 3) Immunofluorescence: use m-IgGκ BP-FITC: sc-516140 or m-IgGκ BP-PE: sc-516141 (dilution range: 1:50-1:200) with UltraCruz® Mounting Medium: sc-24941 or UltraCruz® Hard-set Mounting Medium: sc-359850.

DATA



BCAM (A-4): sc-514758. Western blot analysis of BCAM expression in non-transfected: sc-117752 (A) and mouse BCAM transfected: sc-126494 (B) 293T whole cell lysates.

STORAGE

Store at 4° C, **DO NOT FREEZE**. Stable for one year from the date of shipment. Non-hazardous. No MSDS required.

RESEARCH USE

For research use only, not for use in diagnostic procedures.

PROTOCOLS

See our web site at www.scbt.com for detailed protocols and support products.