

EVA1B (D-9): sc-514783

BACKGROUND

EVA1B, also known as FAM176B or C1orf78, is a 165 amino acid single-pass membrane protein that belongs to the FAM176 family. EVA1B is post-translationally phosphorylated and is encoded by a gene that maps to human chromosome 1. Chromosome 1 spans 260 million base pairs, contains over 3,000 genes and comprises nearly 8% of the human genome. Chromosome 1 houses a large number of disease-associated genes, including those that are involved in familial adenomatous polyposis, Stickler syndrome, Parkinson's disease, Gaucher disease, schizophrenia and Usher syndrome. Aberrations in chromosome 1 are found in a variety of cancers, including head and neck cancer, malignant melanoma and multiple myeloma.

REFERENCES

1. Eudy, J.D., et al. 1998. Mutation of a gene encoding a protein with extracellular matrix motifs in Usher syndrome type IIa. *Science* 280: 1753-1757.
2. Tayebi, N., et al. 2001. Gaucher disease and parkinsonism: a phenotypic and genotypic characterization. *Mol. Genet. Metab.* 73: 313-321.
3. Plasilova, M., et al. 2004. Exclusion of an extracolonic disease modifier locus on chromosome 1p33-36 in a large Swiss familial adenomatous polyposis kindred. *Eur. J. Hum. Genet.* 12: 365-371.
4. Betarbet, R., et al. 2008. Fas-associated factor 1 and Parkinson's disease. *Neurobiol. Dis.* 31: 309-315.
5. Holliday, E.G., et al. 2009. Strong evidence for a novel schizophrenia risk locus on chromosome 1p31.1 in homogeneous pedigrees from Tamil Nadu, India. *Am. J. Psychiatry* 166: 206-215.
6. Balcárková, J., et al. 2009. Gain of chromosome arm 1q in patients in relapse and progression of multiple myeloma. *Cancer Genet. Cytogenet.* 192: 68-72.

CHROMOSOMAL LOCATION

Genetic locus: EVA1B (human) mapping to 1p34.3.

SOURCE

EVA1B (D-9) is a mouse monoclonal antibody raised against amino acids 43-76 mapping within an internal region of EVA1B of human origin.

PRODUCT

Each vial contains 200 µg IgG_{2a} kappa light chain in 1.0 ml of PBS with < 0.1% sodium azide and 0.1% gelatin.

EVA1B (D-9) is available conjugated to agarose (sc-514783 AC), 500 µg/0.25 ml agarose in 1 ml, for IP; to HRP (sc-514783 HRP), 200 µg/ml, for WB, IHC(P) and ELISA; to either phycoerythrin (sc-514783 PE), fluorescein (sc-514783 FITC), Alexa Fluor® 488 (sc-514783 AF488), Alexa Fluor® 546 (sc-514783 AF546), Alexa Fluor® 594 (sc-514783 AF594) or Alexa Fluor® 647 (sc-514783 AF647), 200 µg/ml, for WB (RGB), IF, IHC(P) and FCM; and to either Alexa Fluor® 680 (sc-514783 AF680) or Alexa Fluor® 790 (sc-514783 AF790), 200 µg/ml, for Near-Infrared (NIR) WB, IF and FCM.

Alexa Fluor® is a trademark of Molecular Probes, Inc., Oregon, USA

APPLICATIONS

EVA1B (D-9) is recommended for detection of EVA1B of human origin by Western Blotting (starting dilution 1:100, dilution range 1:100-1:1000), immunoprecipitation [1-2 µg per 100-500 µg of total protein (1 ml of cell lysate)], immunofluorescence (starting dilution 1:50, dilution range 1:50-1:500) and solid phase ELISA (starting dilution 1:30, dilution range 1:30-1:3000).

Suitable for use as control antibody for EVA1B siRNA (h): sc-88411, EVA1B shRNA Plasmid (h): sc-88411-SH and EVA1B shRNA (h) Lentiviral Particles: sc-88411-V.

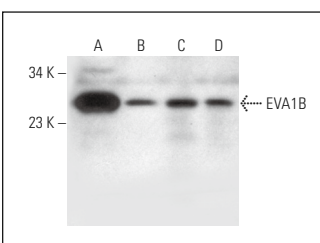
Molecular Weight of EVA1B: 18 kDa.

Positive Controls: WI-38 whole cell lysate: sc-364260, human lung extract: sc-363767 or human liver extract: sc-363766.

RECOMMENDED SUPPORT REAGENTS

To ensure optimal results, the following support reagents are recommended: 1) Western Blotting: use m-IgGκ BP-HRP: sc-516102 or m-IgGκ BP-HRP (Cruz Marker): sc-516102-CM (dilution range: 1:1000-1:10000), Cruz Marker™ Molecular Weight Standards: sc-2035, UltraCruz® Blocking Reagent: sc-516214 and Western Blotting Luminol Reagent: sc-2048. 2) Immunoprecipitation: use Protein A/G PLUS-Agarose: sc-2003 (0.5 ml agarose/2.0 ml). 3) Immunofluorescence: use m-IgGκ BP-FITC: sc-516140 or m-IgGκ BP-PE: sc-516141 (dilution range: 1:50-1:200) with UltraCruz® Mounting Medium: sc-24941 or UltraCruz® Hard-set Mounting Medium: sc-359850.

DATA



EVA1B (D-9): sc-514783. Western blot analysis of EVA1B expression in WI-38 (A) and Hep G2 (B) whole cell lysates and human lung (C) and human liver (D) tissue extracts.

STORAGE

Store at 4° C, **DO NOT FREEZE**. Stable for one year from the date of shipment. Non-hazardous. No MSDS required.

RESEARCH USE

For research use only, not for use in diagnostic procedures.

PROTOCOLS

See our web site at www.scbt.com for detailed protocols and support products.