

FBXO30 (E-10): sc-514862

BACKGROUND

FBXO30 (F-box only protein 30) is a 745 amino acid protein that contains 140 amino acid F-box region, making it a member of the F-box family. FBXO30 also contains one TRAF-type zinc finger. F-box proteins are critical components of the SCF (skp1-CUL-1-F-box protein) type E3 ubiquitin ligase complex and are involved in substrate recognition and recruitment for ubiquitination. F-box proteins are members of a large family that regulates cell cycle, immune response, signaling cascades and developmental programs by targeting proteins, such as cyclins, cyclin-dependent kinase inhibitors, $\text{I}\kappa\text{B-}\alpha$ and β -catenin, for degradation by the proteasome after ubiquitination. Functioning as a component of the SCF complex, FBXO30 is thought to recognize and bind to select phosphorylated proteins, thereby promoting their ubiquitination and subsequent degradation.

REFERENCES

1. Winston, J.T., et al. 1999. The SCF β -TrCP-ubiquitin ligase complex associates specifically with phosphorylated destruction motifs in $\text{I}\kappa\text{B-}\alpha$ and β -catenin and stimulates $\text{I}\kappa\text{B-}\alpha$ ubiquitination *in vitro*. *Genes Dev.* 13: 270-283.
2. Cenciarelli, C., et al. 1999. Identification of a family of human F-box proteins. *Curr. Biol.* 9: 1177-1179.
3. Winston, J.T., et al. 1999. A family of mammalian F-box proteins. *Curr. Biol.* 9: 1180-1182.
4. Craig, K.L. and Tyers, M. 1999. The F-box: a new motif for ubiquitin dependent proteolysis in cell cycle regulation and signal transduction. *Prog. Biophys. Mol. Biol.* 72: 299-328.
5. Ilyin, G.P., et al. 2000. cDNA cloning and expression analysis of new members of the mammalian F-box protein family. *Genomics* 67: 40-47.

CHROMOSOMAL LOCATION

Genetic locus: FBXO30 (human) mapping to 6q24.3; Fbxo30 (mouse) mapping to 10 A1.

SOURCE

FBXO30 (E-10) is a mouse monoclonal antibody raised against amino acids 411-534 mapping within an internal region of FBXO30 of human origin.

PRODUCT

Each vial contains 200 μg IgG $_1$ kappa light chain in 1.0 ml of PBS with < 0.1% sodium azide and 0.1% gelatin.

FBXO30 (E-10) is available conjugated to agarose (sc-514862 AC), 500 μg /0.25 ml agarose in 1 ml, for IP; to HRP (sc-514862 HRP), 200 $\mu\text{g}/\text{ml}$, for WB, IHC(P) and ELISA; to either phycoerythrin (sc-514862 PE), fluorescein (sc-514862 FITC), Alexa Fluor[®] 488 (sc-514862 AF488), Alexa Fluor[®] 546 (sc-514862 AF546), Alexa Fluor[®] 594 (sc-514862 AF594) or Alexa Fluor[®] 647 (sc-514862 AF647), 200 $\mu\text{g}/\text{ml}$, for WB (RGB), IF, IHC(P) and FCM; and to either Alexa Fluor[®] 680 (sc-514862 AF680) or Alexa Fluor[®] 790 (sc-514862 AF790), 200 $\mu\text{g}/\text{ml}$, for Near-Infrared (NIR) WB, IF and FCM.

Alexa Fluor[®] is a trademark of Molecular Probes, Inc., Oregon, USA

APPLICATIONS

FBXO30 (E-10) is recommended for detection of FBXO30 of mouse, rat and human origin by Western Blotting (starting dilution 1:100, dilution range 1:100-1:1000), immunoprecipitation [1-2 μg per 100-500 μg of total protein (1 ml of cell lysate)], immunofluorescence (starting dilution 1:50, dilution range 1:50-1:500) and solid phase ELISA (starting dilution 1:30, dilution range 1:30-1:3000).

Suitable for use as control antibody for FBXO30 siRNA (h): sc-95455, FBXO30 siRNA (m): sc-145117, FBXO30 shRNA Plasmid (h): sc-95455-SH, FBXO30 shRNA Plasmid (m): sc-145117-SH, FBXO30 shRNA (h) Lentiviral Particles: sc-95455-V and FBXO30 shRNA (m) Lentiviral Particles: sc-145117-V.

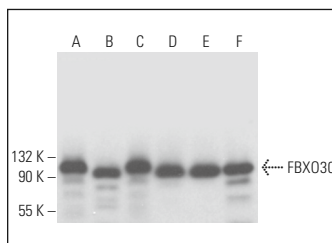
Molecular Weight of FBXO30: 82 kDa.

Positive Controls: HT-1080 whole cell lysate: sc-364183, U-87 MG cell lysate: sc-2411 or NIH/3T3 whole cell lysate: sc-2210.

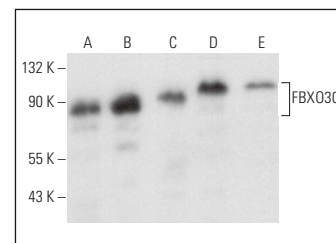
RECOMMENDED SUPPORT REAGENTS

To ensure optimal results, the following support reagents are recommended: 1) Western Blotting: use m-IgG κ BP-HRP: sc-516102 or m-IgG κ BP-HRP (Cruz Marker): sc-516102-CM (dilution range: 1:1000-1:10000), Cruz Marker[™] Molecular Weight Standards: sc-2035, UltraCruz[®] Blocking Reagent: sc-516214 and Western Blotting Luminol Reagent: sc-2048. 2) Immunoprecipitation: use Protein A/G PLUS-Agarose: sc-2003 (0.5 ml agarose/2.0 ml). 3) Immunofluorescence: use m-IgG κ BP-FITC: sc-516140 or m-IgG κ BP-PE: sc-516141 (dilution range: 1:50-1:200) with UltraCruz[®] Mounting Medium: sc-24941 or UltraCruz[®] Hard-set Mounting Medium: sc-359850.

DATA



FBXO30 (E-10): sc-514862. Western blot analysis of FBXO30 expression in Sol8 (A), C2C12 (B), A-10 (C), SJRH30 (D), Daudi (E) and AN3 CA (F) whole cell lysates.



FBXO30 (E-10): sc-514862. Western blot analysis of FBXO30 expression in HT-1080 (A), U-87 MG (B), NIH/3T3 (C), F9 (D) and PC-12 (E) whole cell lysates.

STORAGE

Store at 4[°] C, **DO NOT FREEZE**. Stable for one year from the date of shipment. Non-hazardous. No MSDS required.

RESEARCH USE

For research use only, not for use in diagnostic procedures.

PROTOCOLS

See our web site at www.scbt.com for detailed protocols and support products.