

# WDR62 (H-1): sc-514865

## BACKGROUND

WD-repeats are motifs that are found in a variety of proteins and are characterized by a conserved core of 40-60 amino acids that commonly form a tertiary propeller structure. While proteins that contain WD-repeats participate in a wide range of cellular functions, they are generally involved in regulatory mechanisms concerning chromatin assembly, cell cycle control, signal transduction, RNA processing, apoptosis and vesicular trafficking. WDR62 (WD repeat domain 62), also known as C19orf14, is a 1,518 amino acid protein that contains 15 WD repeats, suggesting a role in regulatory systems throughout the cell. WDR62 exists as multiple alternatively spliced isoforms that are encoded by a gene which maps to human chromosome 19.

## REFERENCES

1. van der Voorn, L. and Ploegh, H.L. 1992. The WD-40 repeat. *FEBS Lett.* 307: 131-134.
2. Neer, E.J., et al. 1994. The ancient regulatory-protein family of WD-repeat proteins. *Nature* 371: 297-300.
3. Garcia-Higuera, I., et al. 1996. Folding of proteins with WD-repeats: comparison of six members of the WD-repeat superfamily to the G protein  $\beta$  subunit. *Biochemistry* 35: 13985-13994.
4. Garcia-Higuera, I., et al. 1998. Folding a WD repeat propeller. Role of highly conserved aspartic acid residues in the G protein  $\beta$  subunit and Sec13. *J. Biol. Chem.* 273: 9041-9049.
5. Smith, T.F., et al. 1999. The WD repeat: a common architecture for diverse functions. *Trends Biochem. Sci.* 24: 181-185.
6. Li, D. and Roberts, R. 2001. WD-repeat proteins: structure characteristics, biological function, and their involvement in human diseases. *Cell. Mol. Life Sci.* 58: 2085-2097.

## CHROMOSOMAL LOCATION

Genetic locus: WDR62 (human) mapping to 19q13.12; Wdr62 (mouse) mapping to 7 B1.

## SOURCE

WDR62 (H-1) is a mouse monoclonal antibody specific for an epitope mapping between amino acids 66-84 near the N-terminus of WDR62 of human origin.

## PRODUCT

Each vial contains 200  $\mu$ g IgM kappa light chain in 1.0 ml of PBS with < 0.1% sodium azide and 0.1% gelatin.

Blocking peptide available for competition studies, sc-514865 P, (100  $\mu$ g peptide in 0.5 ml PBS containing < 0.1% sodium azide and 0.2% stabilizer protein).

## STORAGE

Store at 4° C, \*\*DO NOT FREEZE\*\*. Stable for one year from the date of shipment. Non-hazardous. No MSDS required.

## APPLICATIONS

WDR62 (H-1) is recommended for detection of WDR62 of mouse, rat and human origin by Western Blotting (starting dilution 1:100, dilution range 1:100-1:1000), immunoprecipitation [1-2  $\mu$ g per 100-500  $\mu$ g of total protein (1 ml of cell lysate)], immunofluorescence (starting dilution 1:50, dilution range 1:50-1:500) and solid phase ELISA (starting dilution 1:30, dilution range 1:30-1:3000).

Suitable for use as control antibody for WDR62 siRNA (h): sc-97678, WDR62 siRNA (m): sc-155303, WDR62 shRNA Plasmid (h): sc-97678-SH, WDR62 shRNA Plasmid (m): sc-155303-SH, WDR62 shRNA (h) Lentiviral Particles: sc-97678-V and WDR62 shRNA (m) Lentiviral Particles: sc-155303-V.

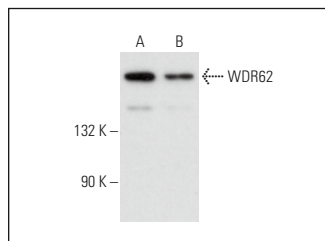
Molecular Weight of WDR62 human isoforms: 166/53/45 kDa.

Positive Controls: c4 whole cell lysate: sc-364186, HeLa whole cell lysate: sc-2200 or Jurkat whole cell lysate: sc-2204.

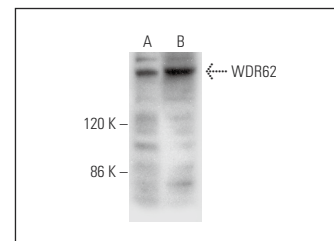
## RECOMMENDED SUPPORT REAGENTS

To ensure optimal results, the following support reagents are recommended: 1) Western Blotting: use m-IgG $\kappa$  BP-HRP: sc-516102 or m-IgG $\kappa$  BP-HRP (Cruz Marker): sc-516102-CM (dilution range: 1:1000-1:10000), Cruz Marker™ Molecular Weight Standards: sc-2035, UltraCruz® Blocking Reagent: sc-516214 and Western Blotting Luminol Reagent: sc-2048. 2) Immunoprecipitation: use Protein L-Agarose: sc-2336 (0.5 ml agarose/2.0 ml). 3) Immunofluorescence: use m-IgG $\kappa$  BP-FITC: sc-516140 or m-IgG $\kappa$  BP-PE: sc-516141 (dilution range: 1:50-1:200) with UltraCruz® Mounting Medium: sc-24941 or UltraCruz® Hard-set Mounting Medium: sc-359850.

## DATA



WDR62 (H-1): sc-514865. Western blot analysis of WDR62 expression in F9 (A) and c4 (B) whole cell lysates.



WDR62 (H-1): sc-514865. Western blot analysis of WDR62 expression in HeLa (A) and Jurkat (B) whole cell lysates.

## RESEARCH USE

For research use only, not for use in diagnostic procedures.

## PROTOCOLS

See our web site at [www.scbt.com](http://www.scbt.com) for detailed protocols and support products.