

# SEC14L3 (E-1): sc-515334

## BACKGROUND

Chromosome 22 contains over 500 genes and about 49 million bases. Being the second smallest human chromosome, 22 contains a surprising variety of interesting genes. Phelan-McDermid syndrome, neurofibromatosis type 2 and autism are associated with chromosome 22. A schizophrenia susceptibility locus has been identified on chromosome 22 and studies show that 22q11 deletion symptoms include a high incidence of schizophrenia. Translocations between chromosomes 9 and 22 may lead to the formation of the Philadelphia chromosome and the subsequent production of the novel fusion protein, Bcr-Abl, a potent cell proliferation activator found in several types of leukemia.

## REFERENCES

1. Gilbert, F. 1998. Disease genes and chromosomes: disease maps of the human genome. *Chromosome 22. Genet. Test.* 2: 89-97.
2. Schwab, S.G. and Wildenauer, D.B. 1999. Chromosome 22 workshop report. *Am. J. Med. Genet.* 88: 276-278.
3. Tsilchorozidou, T., et al. 2004. Constitutional rearrangements of chromosome 22 as a cause of neurofibromatosis 2. *J. Med. Genet.* 41: 529-534.
4. Arinami, T. 2006. Analyses of the associations between the genes of 22q11 deletion syndrome and schizophrenia. *J. Hum. Genet.* 51: 1037-1045.
5. Paylor, R., et al. 2006. TBX1 haploinsufficiency is linked to behavioral disorders in mice and humans: implications for 22q11 deletion syndrome. *Proc. Natl. Acad. Sci. USA* 103: 7729-7734.
6. Zheng, X., et al. 2006. Bcr and its mutants, the reciprocal t(9;22)-associated Abl/Bcr fusion proteins, differentially regulate the cytoskeleton and cell motility. *BMC Cancer* 6: 262.
7. Ahronowitz, I., et al. 2007. Mutational spectrum of the NF2 gene: a meta-analysis of 12 years of research and diagnostic laboratory findings. *Hum. Mutat.* 28: 1-12.

## CHROMOSOMAL LOCATION

Genetic locus: SEC14L3 (human) mapping to 22q12.2; Sec14l3 (mouse) mapping to 11 A1.

## SOURCE

SEC14L3 (E-1) is a mouse monoclonal antibody raised against amino acids 201-243 mapping within an internal region of SEC14L3 of human origin.

## PRODUCT

Each vial contains 200 µg IgG<sub>1</sub> kappa light chain in 1.0 ml of PBS with < 0.1% sodium azide and 0.1% gelatin.

SEC14L3 (E-1) is available conjugated to agarose (sc-515334 AC), 500 µg/0.25 ml agarose in 1 ml, for IP; to HRP (sc-515334 HRP), 200 µg/ml, for WB, IHC(P) and ELISA; to either phycoerythrin (sc-515334 PE), fluorescein (sc-515334 FITC), Alexa Fluor® 488 (sc-515334 AF488), Alexa Fluor® 546 (sc-515334 AF546), Alexa Fluor® 594 (sc-515334 AF594) or Alexa Fluor® 647 (sc-515334 AF647), 200 µg/ml, for WB (RGB), IF, IHC(P) and FCM; and to either Alexa Fluor® 680 (sc-515334 AF680) or Alexa Fluor® 790 (sc-515334 AF790), 200 µg/ml, for Near-Infrared (NIR) WB, IF and FCM.

## APPLICATIONS

EC14L3 (E-1) is recommended for detection of SEC14L3 of mouse, rat and human origin by Western Blotting (starting dilution 1:100, dilution range 1:100-1:1000), immunoprecipitation [1-2 µg per 100-500 µg of total protein (1 ml of cell lysate)], immunofluorescence (starting dilution 1:50, dilution range 1:50-1:500) and solid phase ELISA (starting dilution 1:30, dilution range 1:30-1:3000).

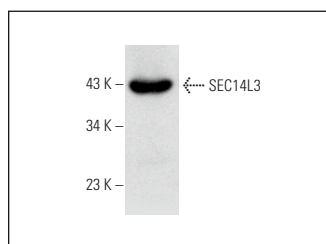
Suitable for use as control antibody for SEC14L3 siRNA (h): sc-106537, SEC14L3 siRNA (m): sc-153300, SEC14L3 shRNA Plasmid (h): sc-106537-SH, SEC14L3 shRNA Plasmid (m): sc-153300-SH, SEC14L3 shRNA (h) Lentiviral Particles: sc-106537-V and SEC14L3 shRNA (m) Lentiviral Particles: sc-153300-V.

Positive Controls: rat lung extract: sc-2396 or mouse lung extract: sc-2390.

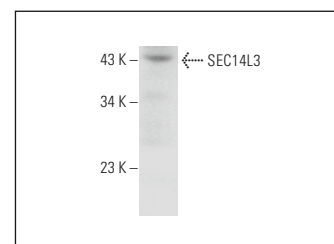
## RECOMMENDED SUPPORT REAGENTS

To ensure optimal results, the following support reagents are recommended: 1) Western Blotting: use m-IgGκ BP-HRP: sc-516102 or m-IgGκ BP-HRP (Cruz Marker): sc-516102-CM (dilution range: 1:1000-1:10000), Cruz Marker™ Molecular Weight Standards: sc-2035, UltraCruz® Blocking Reagent: sc-516214 and Western Blotting Luminol Reagent: sc-2048. 2) Immunoprecipitation: use Protein A/G PLUS-Agarose: sc-2003 (0.5 ml agarose/2.0 ml). 3) Immunofluorescence: use m-IgGκ BP-FITC: sc-516140 or m-IgGκ BP-PE: sc-516141 (dilution range: 1:50-1:200) with UltraCruz® Mounting Medium: sc-24941 or UltraCruz® Hard-set Mounting Medium: sc-359850.

## DATA



SEC14L3 (E-1): sc-515334. Western blot analysis of SEC14L3 expression in mouse lung tissue extract.



SEC14L3 (E-1): sc-515334. Western blot analysis of SEC14L3 expression in rat lung tissue extract.

## STORAGE

Store at 4° C, \*\*DO NOT FREEZE\*\*. Stable for one year from the date of shipment. Non-hazardous. No MSDS required.

## RESEARCH USE

For research use only, not for use in diagnostic procedures.

## PROTOCOLS

See our web site at [www.scbt.com](http://www.scbt.com) for detailed protocols and support products.

Alexa Fluor® is a trademark of Molecular Probes, Inc., Oregon, USA