

ACTR5 (D-10): sc-515343

BACKGROUND

ACTR5 (Actin-related protein 5), also known as ARP5 or INO80M, is a 607 amino acid protein that belongs to the Actin family. Functioning as a component of the INO80 chromatin remodeling complex, ACTR5 interacts with a variety of other Actin-related proteins and, via these interactions, is thought to be involved in transcriptional regulation events. The gene encoding ACTR5 maps to chromosome 20. Comprising approximately 2% of the human genome, chromosome 20 contains nearly 63 million bases that encode over 600 genes, some of which are associated with Creutzfeldt-Jakob disease, amyotrophic lateral sclerosis, spinal muscular atrophy, ring chromosome 20 epilepsy syndrome and Alagille syndrome.

REFERENCES

- Collins, S., et al. 2001. Gerstmann-Sträussler-Scheinker syndrome, fatal familial insomnia and kuru: a review of these less common human transmissible spongiform encephalopathies. *J. Clin. Neurosci.* 8: 387-397.
- Shen, X., et al. 2003. Involvement of Actin-related proteins in ATP-dependent chromatin remodeling. *Mol. Cell* 12: 147-155.
- van Attikum, H., et al. 2004. Recruitment of the INO80 complex by H2A phosphorylation links ATP-dependent chromatin remodeling with DNA double-strand break repair. *Cell* 119: 777-788.
- Jin, J., et al. 2005. A mammalian chromatin remodeling complex with similarities to the yeast INO80 complex. *J. Biol. Chem.* 280: 41207-41212.
- Ville, D., et al. 2006. Early pattern of epilepsy in the ring chromosome 20 syndrome. *Epilepsia* 47: 543-549.
- Kawashima, S., et al. 2007. The INO80 complex is required for damage-induced recombination. *Biochem. Biophys. Res. Commun.* 355: 835-841.
- Ogiwara, H., et al. 2007. The INO80 chromatin remodeling complex functions in sister chromatid cohesion. *Cell Cycle* 6: 1090-1095.
- Yu, E.Y., et al. 2007. Regulation of telomere structure and functions by subunits of the INO80 chromatin remodeling complex. *Mol. Cell. Biol.* 27: 5639-5649.

CHROMOSOMAL LOCATION

Genetic locus: ACTR5 (human) mapping to 20q11.23.

SOURCE

ACTR5 (D-10) is a mouse monoclonal antibody raised against amino acids 49-110 mapping near the N-terminus of ACTR5 of human origin.

PRODUCT

Each vial contains 200 µg IgG_{2b} kappa light chain in 1.0 ml of PBS with < 0.1% sodium azide and 0.1% gelatin.

STORAGE

Store at 4° C, **DO NOT FREEZE**. Stable for one year from the date of shipment. Non-hazardous. No MSDS required.

APPLICATIONS

ACTR5 (D-10) is recommended for detection of ACTR5 of human origin by Western Blotting (starting dilution 1:100, dilution range 1:100-1:1000), immunoprecipitation [1-2 µg per 100-500 µg of total protein (1 ml of cell lysate)], immunofluorescence (starting dilution 1:50, dilution range 1:50-1:500) and solid phase ELISA (starting dilution 1:30, dilution range 1:30-1:3000).

Suitable for use as control antibody for ACTR5 siRNA (h): sc-72442, ACTR5 shRNA Plasmid (h): sc-72442-SH and ACTR5 shRNA (h) Lentiviral Particles: sc-72442-V.

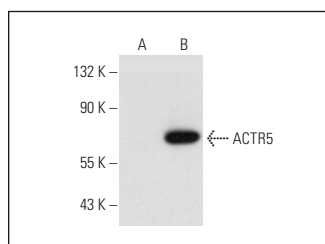
Molecular Weight of ACTR5: 68 kDa.

Positive Controls: ACTR5 (h): 293T Lysate: sc-114374.

RECOMMENDED SUPPORT REAGENTS

To ensure optimal results, the following support reagents are recommended: 1) Western Blotting: use m-IgGκ BP-HRP: sc-516102 or m-IgGκ BP-HRP (Cruz Marker): sc-516102-CM (dilution range: 1:1000-1:10000), Cruz Marker™ Molecular Weight Standards: sc-2035, UltraCruz® Blocking Reagent: sc-516214 and Western Blotting Luminol Reagent: sc-2048. 2) Immunoprecipitation: use Protein A/G PLUS-Agarose: sc-2003 (0.5 ml agarose/2.0 ml). 3) Immunofluorescence: use m-IgGκ BP-FITC: sc-516140 or m-IgGκ BP-PE: sc-516141 (dilution range: 1:50-1:200) with UltraCruz® Mounting Medium: sc-24941 or UltraCruz® Hard-set Mounting Medium: sc-359850.

DATA



ACTR5 (D-10): sc-515343. Western blot analysis of ACTR5 expression in non-transfected: sc-117752 (A) and human ACTR5 transfected: sc-114374 (B) 293T whole cell lysates.

RESEARCH USE

For research use only, not for use in diagnostic procedures.

PROTOCOLS

See our web site at www.scbt.com for detailed protocols and support products.