

LYSMD1 (F-8): sc-515348

BACKGROUND

LYSMD1 (LysM and putative peptidoglycan-binding domain-containing protein 1), also known as SB145, is a 227 amino acid protein that contains one LysM repeat and exists as two alternatively spliced isoforms. The gene encoding LYSMD1 maps to human chromosome 1, which spans about 260 million base pairs and comprises 8% of the human genome. There are about 3,000 genes on chromosome 1, and considering the great number of genes there are also a large number of diseases associated with chromosome 1. Notably, the rare aging disease Hutchinson-Gilford progeria is associated with the LMNA gene which encodes lamin A. The MUTYH gene is located on chromosome 1 and is partially responsible for familial adenomatous polyposis. Stickler syndrome, Parkinsons, Gaucher disease and Usher syndrome are also associated with chromosome 1. A breakpoint has been identified in 1q which disrupts the DISC1 gene and is linked to schizophrenia. Aberrations in chromosome 1 are found in a variety of cancers including head and neck cancer, malignant melanoma and multiple myeloma.

REFERENCES

1. Watson, M.L., et al. 1990. Genomic organization of the selectin family of leukocyte adhesion molecules on human and mouse chromosome 1. *J. Exp. Med.* 172: 263-272.
2. Blackwood, D.H., et al. 2001. Schizophrenia and affective disorders— cosegregation with a translocation at chromosome 1q42 that directly disrupts brain-expressed genes: clinical and P300 findings in a family. *Am. J. Hum. Genet.* 69: 428-433.
3. Weise, A., et al. 2005. New insights into the evolution of chromosome 1. *Cytogenet. Genome Res.* 108: 217-222.
4. Lans, H. and Hoeijmakers, J.H. 2006. Cell biology: aging nucleus gets out of shape. *Nature* 440: 32-34.
5. Gregory, S.G., et al. 2006. The DNA sequence and biological annotation of human chromosome 1. *Nature* 441: 315-321.
6. Hennah, W., et al. 2006. Genes and schizophrenia: beyond schizophrenia: the role of DISC1 in major mental illness. *Schizophr. Bull.* 32: 409-416.
7. Marzin, Y., et al. 2006. Chromosome 1 abnormalities in multiple myeloma. *Anticancer Res.* 26: 953-959.
8. McClintock, D., et al. 2006. Hutchinson-Gilford progeria mutant lamin A primarily targets human vascular cells as detected by an anti-Lamin A G608G antibody. *Proc. Natl. Acad. Sci. USA* 103: 2154-2159.
9. Scaffidi, P. and Misteli, T. 2006. Lamin A-dependent nuclear defects in human aging. *Science* 312: 1059-1063.

CHROMOSOMAL LOCATION

Genetic locus: LYSMD1 (human) mapping to 1q21.3.

SOURCE

LYSMD1 (F-8) is a mouse monoclonal antibody raised against amino acids 174-227 mapping at the C-terminus of LYSMD1 of human origin.

PRODUCT

Each vial contains 200 µg IgG₁ kappa light chain in 1.0 ml of PBS with < 0.1% sodium azide and 0.1% gelatin.

APPLICATIONS

LYSMD1 (F-8) is recommended for detection of LYSMD1 of human origin by Western Blotting (starting dilution 1:100, dilution range 1:100-1:1000), immunoprecipitation [1-2 µg per 100-500 µg of total protein (1 ml of cell lysate)], immunofluorescence (starting dilution 1:50, dilution range 1:50-1:500) and solid phase ELISA (starting dilution 1:30, dilution range 1:30-1:3000).

Suitable for use as control antibody for LYSMD1 siRNA (h): sc-88211, LYSMD1 shRNA Plasmid (h): sc-88211-SH and LYSMD1 shRNA (h) Lentiviral Particles: sc-88211-V.

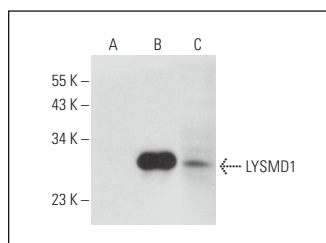
Molecular Weight of LYSMD1: 25 kDa.

Positive Controls: HeLa whole cell lysate: sc-2200 or LYSMD1 (h): 293T Lysate: sc-117177.

RECOMMENDED SUPPORT REAGENTS

To ensure optimal results, the following support reagents are recommended: 1) Western Blotting: use m-IgGκ BP-HRP: sc-516102 or m-IgGκ BP-HRP (Cruz Marker): sc-516102-CM (dilution range: 1:1000-1:10000), Cruz Marker™ Molecular Weight Standards: sc-2035, UltraCruz® Blocking Reagent: sc-516214 and Western Blotting Luminol Reagent: sc-2048. 2) Immunoprecipitation: use Protein A/G PLUS-Agarose: sc-2003 (0.5 ml agarose/2.0 ml). 3) Immunofluorescence: use m-IgGκ BP-FITC: sc-516140 or m-IgGκ BP-PE: sc-516141 (dilution range: 1:50-1:200) with UltraCruz® Mounting Medium: sc-24941 or UltraCruz® Hard-set Mounting Medium: sc-359850.

DATA



LYSMD1 (F-8): sc-515348. Western blot analysis of LYSMD1 expression in non-transfected 293T: sc-117752 (A), human LYSMD1 transfected 293T: sc-117177 (B) and HeLa (C) whole cell lysates.

STORAGE

Store at 4° C, **DO NOT FREEZE**. Stable for one year from the date of shipment. Non-hazardous. No MSDS required.

RESEARCH USE

For research use only, not for use in diagnostic procedures.