

SLC35F3 (C-12): sc-515378

BACKGROUND

SLC35F3 (solute carrier family 35, member F3) is a 421 amino acid multi-pass membrane protein that belongs to the SLC35F solute transporter family. The SLC35F3 protein is expressed in brain, specifically in the cerebellum. The SLC35F3 and TWIK-1 genes are adjacent in two pufferfish species, these genes are syntenic with Thrombospondin 2 (TSP-2) in chicken but not in mouse or human. Existing as two alternatively spliced isoforms, the SLC35F3 gene is conserved in chimpanzee, canine, bovine, mouse, chicken, zebrafish and *C. elegans*, and maps human chromosome 1q42.2. Chromosome 1 is the largest human chromosome spanning about 260 million base pairs and making up 8% of the human genome. There are about 3,000 genes on chromosome 1, and considering the great number of genes there are also a large number of diseases associated with chromosome 1. The MUTYH gene is located on chromosome 1 and is partially responsible for familial adenomatous polyposis. Stickler syndrome, Parkinsons, Gaucher disease and Usher syndrome are also associated with chromosome 1.

REFERENCES

1. Watson, M.L., et al. 1990. Genomic organization of the selectin family of leukocyte adhesion molecules on human and mouse chromosome 1. *J. Exp. Med.* 172: 263-272.
2. Blackwood, D.H., et al. 2001. Schizophrenia and affective disorders— cosegregation with a translocation at chromosome 1q42 that directly disrupts brain-expressed genes: clinical and P300 findings in a family. *Am. J. Hum. Genet.* 69: 428-433.

CHROMOSOMAL LOCATION

Genetic locus: SLC35F3 (human) mapping to 1q42.2; *Slc35f3* (mouse) mapping to 8 E2.

SOURCE

SLC35F3 (C-12) is a mouse monoclonal antibody specific for an epitope mapping between amino acids 4-20 at the N-terminus of SLC35F3 of human origin.

PRODUCT

Each vial contains 200 µg IgG₁ kappa light chain in 1.0 ml of PBS with < 0.1% sodium azide and 0.1% gelatin.

SLC35F3 (C-12) is available conjugated to agarose (sc-515378 AC), 500 µg/0.25 ml agarose in 1 ml, for IP; to HRP (sc-515378 HRP), 200 µg/ml, for WB, IHC(P) and ELISA; to either phycoerythrin (sc-515378 PE), fluorescein (sc-515378 FITC), Alexa Fluor® 488 (sc-515378 AF488), Alexa Fluor® 546 (sc-515378 AF546), Alexa Fluor® 594 (sc-515378 AF594) or Alexa Fluor® 647 (sc-515378 AF647), 200 µg/ml, for WB (RGB), IF, IHC(P) and FCM; and to either Alexa Fluor® 680 (sc-515378 AF680) or Alexa Fluor® 790 (sc-515378 AF790), 200 µg/ml, for Near-Infrared (NIR) WB, IF and FCM.

Blocking peptide available for competition studies, sc-515378 P, (100 µg peptide in 0.5 ml PBS containing < 0.1% sodium azide and 0.2% stabilizer protein).

Alexa Fluor® is a trademark of Molecular Probes, Inc., Oregon, USA

APPLICATIONS

SLC35F3 (C-12) is recommended for detection of SLC35F3 of mouse, rat and human origin by Western Blotting (starting dilution 1:100, dilution range 1:100-1:1000), immunoprecipitation [1-2 µg per 100-500 µg of total protein (1 ml of cell lysate)], immunofluorescence (starting dilution 1:50, dilution range 1:50-1:500) and solid phase ELISA (starting dilution 1:30, dilution range 1:30-1:3000).

Suitable for use as control antibody for SLC35F3 siRNA (h): sc-88352, SLC35F3 siRNA (m): sc-153544, SLC35F3 shRNA Plasmid (h): sc-88352-SH, SLC35F3 shRNA Plasmid (m): sc-153544-SH, SLC35F3 shRNA (h) Lentiviral Particles: sc-88352-V and SLC35F3 shRNA (m) Lentiviral Particles: sc-153544-V.

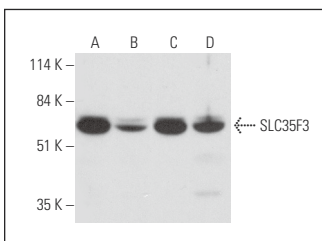
Molecular Weight of SLC35F3 isoforms 1/2: 47/55 kDa.

Positive Controls: HeLa whole cell lysate: sc-2200, HEK293T whole cell lysate: sc-45137 or SK-MEL-28 cell lysate: sc-2236.

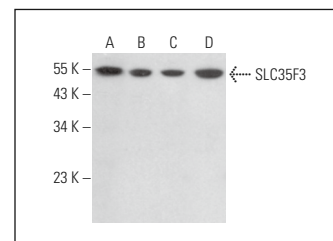
RECOMMENDED SUPPORT REAGENTS

To ensure optimal results, the following support reagents are recommended: 1) Western Blotting: use m-IgGκ BP-HRP: sc-516102 or m-IgGκ BP-HRP (Cruz Marker): sc-516102-CM (dilution range: 1:1000-1:10000), Cruz Marker™ Molecular Weight Standards: sc-2035, UltraCruz® Blocking Reagent: sc-516214 and Western Blotting Luminol Reagent: sc-2048. 2) Immunoprecipitation: use Protein A/G PLUS-Agarose: sc-2003 (0.5 ml agarose/2.0 ml). 3) Immunofluorescence: use m-IgGκ BP-FITC: sc-516140 or m-IgGκ BP-PE: sc-516141 (dilution range: 1:50-1:200) with UltraCruz® Mounting Medium: sc-24941 or UltraCruz® Hard-set Mounting Medium: sc-359850.

DATA



SLC35F3 (C-12): sc-515378. Western blot analysis of SLC35F3 expression in NK-92 (A), HeLa (B), HEK293T (C) and SK-MEL-28 (D) whole cell lysates.



SLC35F3 (C-12): sc-515378. Western blot analysis of SLC35F3 expression in HeLa (A), A2058 (B), Neuro-2A (C) and BYDP (D) whole cell lysates.

SELECT PRODUCT CITATIONS

1. Chandrasekaran, A.P., et al. 2021. USP32 confers cancer cell resistance to YM155 via promoting ER-associated degradation of solute carrier protein SLC35F2. *Theranostics* 11: 9752-9771.

STORAGE

Store at 4° C, **DO NOT FREEZE**. Stable for one year from the date of shipment. Non-hazardous. No MSDS required.

RESEARCH USE

For research use only, not for use in diagnostic procedures.