

QTRTD1 (E-4): sc-515572

BACKGROUND

QTRTD1 (queuine tRNA-ribosyltransferase domain containing 1) is a 415 amino acid protein involved in tRNA modification and tRNA-queuosine biosynthesis. Localizing to cytoplasm, QTRTD1 also localizes to the mitochondrial outer membrane and associates with QTRT1 (queuine tRNA-ribosyltransferase domain containing 1) to form an active queuine tRNA-ribosyltransferase. At the wobble position of tRNAs with GUN anticodons, QTRTD1 exchanges queuine for guanine to form queuosine, a modified nucleoside. QTRTD1 is a member of the queuine tRNA-ribosyltransferase family, QTRTD1 subfamily and is encoded by a gene located on human chromosome 3, which houses over 1,100 genes, including a chemokine receptor (CKR) gene cluster and a variety of human cancer-related gene loci. Marfan Syndrome, porphyria, von Hippel-Lindau syndrome, osteogenesis imperfecta and Charcot-Marie-Tooth disease are a few of the numerous genetic diseases associated with chromosome 3.

REFERENCES

- Collod, G., et al. 1994. A second locus for Marfan syndrome maps to chromosome 3p24.2-p25. *Nat. Genet.* 8: 264-268.
- De Jonghe, P., et al. 1997. Mutilating neuropathic ulcerations in a chromosome 3q13-q22 linked Charcot-Marie-Tooth disease type 2B family. *J. Neurol. Neurosurg. Psychiatr.* 62: 570-573.
- Maho, A., et al. 1999. Mapping of the CCXCR1, CX3CR1, CCBP2 and CCR9 genes to the CCR cluster within the 3p21.3 region of the human genome. *Cytogenet. Cell Genet.* 87: 265-268.
- Robinson, P.N. and Godfrey, M. 2000. The molecular genetics of Marfan syndrome and related microfibrilopathies. *J. Med. Genet.* 37: 9-25.
- Braga, E.A., et al. 2003. New tumor suppressor genes in hot spots of human chromosome 3: new methods of identification. *Mol. Biol.* 37: 194-211.

CHROMOSOMAL LOCATION

Genetic locus: QTRTD1 (human) mapping to 3q13.31; Qtrtd1 (mouse) mapping to 16 B4.

SOURCE

QTRTD1 (E-4) is a mouse monoclonal antibody raised against amino acids 183-356 mapping within an internal region of QTRTD1 of human origin.

PRODUCT

Each vial contains 200 µg IgG₁ kappa light chain in 1.0 ml of PBS with < 0.1% sodium azide and 0.1% gelatin.

QTRTD1 (E-4) is available conjugated to agarose (sc-515572 AC), 500 µg/0.25 ml agarose in 1 ml, for IP; to HRP (sc-515572 HRP), 200 µg/ml, for WB, IHC(P) and ELISA; to either phycoerythrin (sc-515572 PE), fluorescein (sc-515572 FITC), Alexa Fluor® 488 (sc-515572 AF488), Alexa Fluor® 546 (sc-515572 AF546), Alexa Fluor® 594 (sc-515572 AF594) or Alexa Fluor® 647 (sc-515572 AF647), 200 µg/ml, for WB (RGB), IF, IHC(P) and FCM; and to either Alexa Fluor® 680 (sc-515572 AF680) or Alexa Fluor® 790 (sc-515572 AF790), 200 µg/ml, for Near-Infrared (NIR) WB, IF and FCM.

APPLICATIONS

QTRTD1 (E-4) is recommended for detection of QTRTD1 of mouse, rat and human origin by Western Blotting (starting dilution 1:100, dilution range 1:100-1:1000), immunoprecipitation [1-2 µg per 100-500 µg of total protein (1 ml of cell lysate)], immunofluorescence (starting dilution 1:50, dilution range 1:50-1:500) and solid phase ELISA (starting dilution 1:30, dilution range 1:30-1:3000).

Suitable for use as control antibody for QTRTD1 siRNA (h): sc-78408, QTRTD1 siRNA (m): sc-152617, QTRTD1 shRNA Plasmid (h): sc-78408-SH, QTRTD1 shRNA Plasmid (m): sc-152617-SH, QTRTD1 shRNA (h) Lentiviral Particles: sc-78408-V and QTRTD1 shRNA (m) Lentiviral Particles: sc-152617-V.

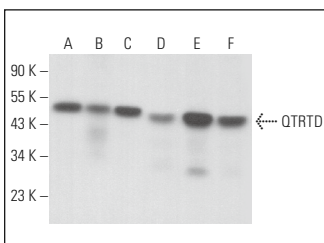
Molecular Weight of QTRTD1: 47 kDa.

Positive Controls: QTRTD1 (m2): 293T Lysate: sc-122874, U-937 cell lysate: sc-2239 or HL-60 whole cell lysate: sc-2209.

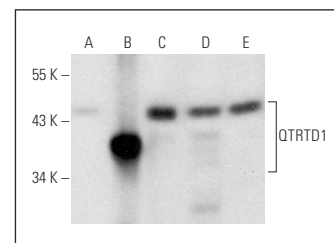
RECOMMENDED SUPPORT REAGENTS

To ensure optimal results, the following support reagents are recommended: 1) Western Blotting: use m-IgGκ BP-HRP: sc-516102 or m-IgGκ BP-HRP (Cruz Marker): sc-516102-CM (dilution range: 1:1000-1:10000), Cruz Marker™ Molecular Weight Standards: sc-2035, UltraCruz® Blocking Reagent: sc-516214 and Western Blotting Luminol Reagent: sc-2048. 2) Immunoprecipitation: use Protein A/G PLUS-Agarose: sc-2003 (0.5 ml agarose/2.0 ml). 3) Immunofluorescence: use m-IgGκ BP-FITC: sc-516140 or m-IgGκ BP-PE: sc-516141 (dilution range: 1:50-1:200) with UltraCruz® Mounting Medium: sc-24941 or UltraCruz® Hard-set Mounting Medium: sc-359850.

DATA



QTRTD1 (E-4): sc-515572. Western blot analysis of QTRTD1 expression in HL-60 (A), Ramos (B), NAMALWA (C), J774.A1 (D), WEHI-231 (E) and RAW 264.7 (F) whole cell lysates.



QTRTD1 (E-4): sc-515572. Western blot analysis of QTRTD1 expression in non-transfected 293T: sc-117752 (A), mouse QTRTD1 transfected 293T: sc-122874 (B), U-937 (C), HL-60 (D) and LNCaP (E) whole cell lysates.

STORAGE

Store at 4° C, **DO NOT FREEZE**. Stable for one year from the date of shipment. Non-hazardous. No MSDS required.

RESEARCH USE

For research use only, not for use in diagnostic procedures.

Alexa Fluor® is a trademark of Molecular Probes, Inc., Oregon, USA