

ZNF624 (C-8): sc-515663

BACKGROUND

Zinc-finger proteins contain DNA-binding domains and have a wide variety of functions, most of which encompass some form of transcriptional activation or repression. The majority of zinc-finger proteins contain a Krüppel-type DNA binding domain and a KRAB domain, which is thought to interact with KAP1, thereby recruiting histone modifying proteins. Zinc finger protein 624 (ZNF624) is a 739 amino acid member of the Krüppel C₂H₂-type zinc-finger protein family. Localized to the nucleus, ZNF624 contains 21 C₂H₂-type zinc fingers through which it is thought to be involved in DNA-binding and transcriptional regulation.

REFERENCES

1. Payre, F. and Vincent, A. 1988. Finger proteins and DNA-specific recognition: distinct patterns of conserved amino acids suggest different evolutionary modes. *FEBS Lett.* 234: 245-250.
2. Berg, J.M. 1988. Proposed structure for the zinc-binding domains from transcription factor IIIA and related proteins. *Proc. Natl. Acad. Sci. USA* 85: 99-102.
3. Thiesen, H.J. 1990. Multiple genes encoding zinc finger domains are expressed in human T cells. *New Biol.* 2: 363-374.
4. Rosenfeld, R. and Margalit, H. 1993. Zinc fingers: conserved properties that can distinguish between spurious and actual DNA-binding motifs. *J. Biomol. Struct. Dyn.* 11: 557-570.
5. Abrink, M., Aveskogh, M. and Hellman, L. 1995. Isolation of cDNA clones for 42 different Krüppel-related zinc finger proteins expressed in the human monoblast cell line U-937. *DNA Cell Biol.* 14: 125-136.
6. Walter, L. and Günther, E. 2000. Physical mapping and evolution of the centromeric class I gene-containing region of the rat MHC. *Immunogenetics* 51: 829-837.
7. Durand, S., Abadie, P., Angeletti, S. and Genti-Raimondi, S. 2003. Identification of multiple differentially expressed messenger RNAs in normal and pathological trophoblast. *Placenta* 24: 209-218.
8. Tian, C.Y., Zhang, L.Q. and He, F.C. 2006. Progress in the study of KRAB zinc finger protein. *Yi Chuan* 28: 1451-1456.

CHROMOSOMAL LOCATION

Genetic locus: ZNF624 (human) mapping to 17p11.2; Gm3055 (mouse) mapping to 10 C1.

SOURCE

ZNF624 (C-8) is a mouse monoclonal antibody raised against amino acids 158-234 mapping near the N-terminus of ZNF624 of human origin.

PRODUCT

Each vial contains 200 µg IgG_{2a} kappa light chain in 1.0 ml of PBS with < 0.1% sodium azide and 0.1% gelatin.

APPLICATIONS

ZNF624 (C-8) is recommended for detection of ZNF624 of human origin, Gm3055 of mouse origin and LOC100909569 of rat origin by Western Blotting (starting dilution 1:100, dilution range 1:100-1:1000), immunoprecipitation [1-2 µg per 100-500 µg of total protein (1 ml of cell lysate)], immunofluorescence (starting dilution 1:50, dilution range 1:50-1:500) and solid phase ELISA (starting dilution 1:30, dilution range 1:30-1:3000).

Suitable for use as control antibody for ZNF624 siRNA (h): sc-94044, ZNF624 shRNA Plasmid (h): sc-94044-SH and ZNF624 shRNA (h) Lentiviral Particles: sc-94044-V.

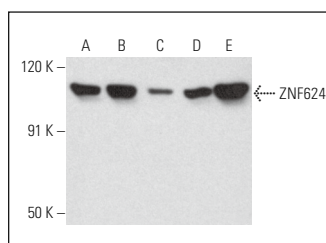
Molecular Weight of ZNF624: 86 kDa.

Positive Controls: Hep G2 cell lysate: sc-2227, HeLa whole cell lysate: sc-2200 or Jurkat whole cell lysate: sc-2204.

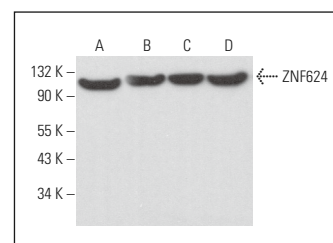
RECOMMENDED SUPPORT REAGENTS

To ensure optimal results, the following support reagents are recommended: 1) Western Blotting: use m-IgGκ BP-HRP: sc-516102 or m-IgGκ BP-HRP (Cruz Marker): sc-516102-CM (dilution range: 1:1000-1:10000), Cruz Marker™ Molecular Weight Standards: sc-2035, UltraCruz® Blocking Reagent: sc-516214 and Western Blotting Luminol Reagent: sc-2048. 2) Immunoprecipitation: use Protein A/G PLUS-Agarose: sc-2003 (0.5 ml agarose/2.0 ml). 3) Immunofluorescence: use m-IgGκ BP-FITC: sc-516140 or m-IgGκ BP-PE: sc-516141 (dilution range: 1:50-1:200) with UltraCruz® Mounting Medium: sc-24941 or UltraCruz® Hard-set Mounting Medium: sc-359850.

DATA



ZNF624 (C-8): sc-515663. Western blot analysis of ZNF624 expression in Jurkat (A), Hep G2 (B), HEK293 (C), HeLa (D) and MDA-MB-231 (E) whole cell lysates.



ZNF624 (C-8): sc-515663. Western blot analysis of ZNF624 expression in Hep G2 (A), Caki-1 (B), BT-20 (C) and K-562 (D) whole cell lysates.

STORAGE

Store at 4° C, **DO NOT FREEZE**. Stable for one year from the date of shipment. Non-hazardous. No MSDS required.

RESEARCH USE

For research use only, not for use in diagnostic procedures.

PROTOCOLS

See our web site at www.scbt.com for detailed protocols and support products.