

CPTI-M (D-8): sc-515709

BACKGROUND

The mitochondrial β -oxidation of long-chain fatty acids is initiated by the sequential action of carnitine palmitoyltransferase (CPT) I (outer membrane and detergent labile) and II (inner membrane and detergent stable), together with carnitine carrier. CPTI catalyzes the first reaction in the transport of long-chain fatty acids from the cytoplasm to the mitochondrion, a rate-limiting step in β -oxidation. Two types of CPTI are known, the liver (CPTIA) and muscle (CPTIB) isoforms. The muscle type protein is specially expressed in heart and skeletal muscle. Membrane-bound CPTI, but not CPTII, is inhibited reversibly by malonyl-coenzyme A (CoA). Unlike CPTII, CPTI requires membrane integrity for catalytic function. In addition, glutamic acid 3 and histidine 5 are necessary for malonyl CoA inhibition and binding to liver CPTI, but not for catalytic activity.

REFERENCES

1. Pande, S.V. and Parvin, R. 1976. Characterization of carnitine acylcarnitine translocase system of heart mitochondria. *J. Biol. Chem.* 251: 6683-6691.
2. McGarry, J.D., et al. 1989. Regulation of ketogenesis and the renaissance of carnitine palmitoyltransferase. *Diabetes Metab. Rev.* 5: 271-284.
3. Woeltje, K.F., et al. 1990. Inter-tissue and inter-species characteristics of the mitochondrial carnitine palmitoyltransferase enzyme system. *J. Biol. Chem.* 265: 10714-10719.
4. Britton, C.H., et al. 1995. Human liver mitochondrial carnitine palmitoyltransferase I: characterization of its cDNA and chromosomal localization and partial analysis of the gene. *Proc. Natl. Acad. Sci. USA* 92: 1984-1988.
5. Yamazaki, N., et al. 1996. Isolation and characterization of cDNA and genomic clones encoding human muscle type carnitine palmitoyltransferase I. *Biochim. Biophys. Acta* 1307: 157-161.
6. Zhu, H., et al. 1997. Functional studies of yeast-expressed human heart muscle carnitine palmitoyltransferase I. *Arch. Biochem. Biophys.* 347: 53-61.
7. Yamazaki, N., et al. 1997. Structural features of the gene encoding human muscle type carnitine palmitoyltransferase I. *FEBS Lett.* 409: 401-406.
8. Woldegiorgis, G., et al. 2000. Functional characterization of mammalian mitochondrial carnitine palmitoyltransferases I and II expressed in the yeast *Pichia pastoris*. *J. Nutr.* 130: 310-314.

CHROMOSOMAL LOCATION

Genetic locus: CPT1B (human) mapping to 22q13.33.

SOURCE

CPTI-M (D-8) is a mouse monoclonal antibody specific for an epitope mapping between amino acids 685-705 within a cytoplasmic domain of CPTI muscle of human origin.

PRODUCT

Each vial contains 200 μ g IgG₁ kappa light chain in 1.0 ml of PBS with < 0.1% sodium azide and 0.1% gelatin.

APPLICATIONS

CPTI-M (D-8) is recommended for detection of CPTI muscle of human origin by Western Blotting (starting dilution 1:100, dilution range 1:100-1:1000), immunoprecipitation [1-2 μ g per 100-500 μ g of total protein (1 ml of cell lysate)], immunofluorescence (starting dilution 1:50, dilution range 1:50-1:500) and solid phase ELISA (starting dilution 1:30, dilution range 1:30-1:3000).

Suitable for use as control antibody for CPTI-M siRNA (h): sc-40382, CPTI-M shRNA Plasmid (h): sc-40382-SH and CPTI-M shRNA (h) Lentiviral Particles: sc-40382-V.

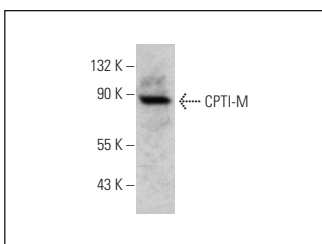
Molecular Weight of CPTI-M: 75 kDa.

Positive Controls: human heart extract: sc-363763.

RECOMMENDED SUPPORT REAGENTS

To ensure optimal results, the following support reagents are recommended: 1) Western Blotting: use m-IgG κ BP-HRP: sc-516102 or m-IgG κ BP-HRP (Cruz Marker): sc-516102-CM (dilution range: 1:1000-1:10000), Cruz Marker™ Molecular Weight Standards: sc-2035, TBS Blotto A Blocking Reagent: sc-2333 and Western Blotting Luminol Reagent: sc-2048. 2) Immunoprecipitation: use Protein A/G PLUS-Agarose: sc-2003 (0.5 ml agarose/2.0 ml). 3) Immunofluorescence: use m-IgG κ BP-FITC: sc-516140 or m-IgG κ BP-PE: sc-516141 (dilution range: 1:50-1:200) with UltraCruz® Mounting Medium: sc-24941 or UltraCruz® Hard-set Mounting Medium: sc-359850.

DATA



CPTI-M (D-8): sc-515709. Western blot analysis of CPTI-M expression in human heart tissue extract.

STORAGE

Store at 4° C, **DO NOT FREEZE**. Stable for one year from the date of shipment. Non-hazardous. No MSDS required.

RESEARCH USE

For research use only, not for use in diagnostic procedures.

PROTOCOLS

See our web site at www.scbt.com for detailed protocols and support products.