

TIP30 (F-10): sc-515728

BACKGROUND

TIP30 (30 kDa HIV-1 TAT-interacting protein), also known as HTATIP2 (HIV-1 TAT-interactive protein 2) or CC3, is a ubiquitously expressed protein that functions as an oxidoreductase. It acts as a tumor suppressor participating in metabolic suppression, inhibition of angiogenesis and induction of apoptosis. TIP30 interacts with the ER α -interacting coactivator NCoA-5 and functions to regulate liganded and unliganded ER α -mediated c-Myc transcription. More specifically, when overexpressed TIP30 represses c-Myc transcription mediated by ER α , while the deficiency of TIP30 leads to an increase in c-Myc transcription. In addition, TIP30 interacts with the activation domain of HIV-1 TAT and enhances its transcription by phosphorylating RNA polymerase II (Pol II). Defects in TIP30 are associated with hepatocellular carcinomas and apoptotic resistant tumor cells, suggesting a potential use for TIP30 in antitumor therapy.

REFERENCES

1. Ito, M., et al. 2003. TIP30 deficiency increases susceptibility to tumorigenesis. *Cancer Res.* 63: 8763-8767.
2. Jiang, C., et al. 2004. TIP30 interacts with an estrogen receptor α -interacting coactivator CIA and regulates c-myc transcription. *J. Biol. Chem.* 279: 27781-27789.
3. Zhang, D.H., et al. 2005. Overexpression of CC3/TIP30 is associated with HER-2/neu status in breast cancer. *J. Cancer Res. Clin. Oncol.* 131: 603-608.
4. El Omari, K., et al. 2005. Crystal structure of CC3 (TIP30): implications for its role as a tumor suppressor. *J. Biol. Chem.* 280: 18229-18236.
5. Shi, M., et al. 2005. TIP30 regulates apoptosis-related genes in its apoptotic signal transduction pathway. *World J. Gastroenterol.* 11: 221-227.
6. Pecha, J., et al. 2007. Deletion of TIP30 leads to rapid immortalization of murine mammary epithelial cells and ductal hyperplasia in the mammary gland. *Oncogene* 26: 7423-7431.

CHROMOSOMAL LOCATION

Genetic locus: HTATIP2 (human) mapping to 11p15.1; Htatip2 (mouse) mapping to 7 B5.

SOURCE

TIP30 (F-10) is a mouse monoclonal antibody raised against amino acids 145-217 mapping near the C-terminus of TIP30 of human origin.

PRODUCT

Each vial contains 200 μ g IgG₁ kappa light chain in 1.0 ml of PBS with < 0.1% sodium azide and 0.1% gelatin.

TIP30 (F-10) is available conjugated to agarose (sc-515728 AC), 500 μ g/0.25 ml agarose in 1 ml, for IP; to HRP (sc-515728 HRP), 200 μ g/ml, for WB, IHC(P) and ELISA; to either phycoerythrin (sc-515728 PE), fluorescein (sc-515728 FITC), Alexa Fluor[®] 488 (sc-515728 AF488), Alexa Fluor[®] 546 (sc-515728 AF546), Alexa Fluor[®] 594 (sc-515728 AF594) or Alexa Fluor[®] 647 (sc-515728 AF647), 200 μ g/ml, for WB (RGB), IF, IHC(P) and FCM; and to either Alexa Fluor[®] 680 (sc-515728 AF680) or Alexa Fluor[®] 790 (sc-515728 AF790), 200 μ g/ml, for Near-Infrared (NIR) WB, IF and FCM.

APPLICATIONS

TIP30 (F-10) is recommended for detection of TIP30 of mouse, rat and human origin by Western Blotting (starting dilution 1:100, dilution range 1:100-1:1000), immunoprecipitation [1-2 μ g per 100-500 μ g of total protein (1 ml of cell lysate)], immunofluorescence (starting dilution 1:50, dilution range 1:50-1:500) and solid phase ELISA (starting dilution 1:30, dilution range 1:30-1:3000).

Suitable for use as control antibody for TIP30 siRNA (h): sc-63131, TIP30 siRNA (m): sc-63132, TIP30 shRNA Plasmid (h): sc-63131-SH, TIP30 shRNA Plasmid (m): sc-63132-SH, TIP30 shRNA (h) Lentiviral Particles: sc-63131-V and TIP30 shRNA (m) Lentiviral Particles: sc-63132-V.

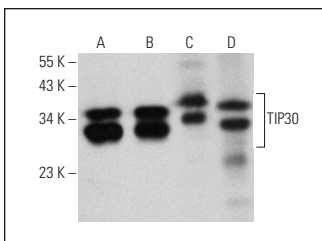
Molecular Weight of TIP30: 30 kDa.

Positive Controls: HeLa whole cell lysate: sc-2200, A-431 whole cell lysate: sc-2201 and human lung extract: sc-363767.

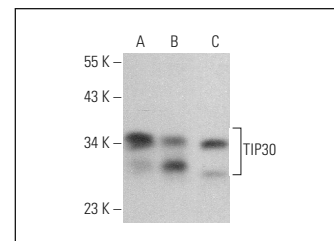
RECOMMENDED SUPPORT REAGENTS

To ensure optimal results, the following support reagents are recommended: 1) Western Blotting: use m-IgG κ BP-HRP: sc-516102 or m-IgG κ BP-HRP (Cruz Marker): sc-516102-CM (dilution range: 1:1000-1:10000), Cruz Marker[™] Molecular Weight Standards: sc-2035, UltraCruz[®] Blocking Reagent: sc-516214 and Western Blotting Luminol Reagent: sc-2048. 2) Immunoprecipitation: use Protein A/G PLUS-Agarose: sc-2003 (0.5 ml agarose/2.0 ml). 3) Immunofluorescence: use m-IgG κ BP-FITC: sc-516140 or m-IgG κ BP-PE: sc-516141 (dilution range: 1:50-1:200) with UltraCruz[®] Mounting Medium: sc-24941 or UltraCruz[®] Hard-set Mounting Medium: sc-359850.

DATA



TIP30 (F-10): sc-515728. Western blot analysis of TIP30 expression in HeLa (A), A-431 (B) and human platelet (C) whole cell lysates and human lung tissue extract (D).



TIP30 (F-10): sc-515728. Western blot analysis of TIP30 expression in A-673 (A), SJRH30 (B) and RAW 264.7 (C) whole cell lysates.

STORAGE

Store at 4° C, **DO NOT FREEZE**. Stable for one year from the date of shipment. Non-hazardous. No MSDS required.

RESEARCH USE

For research use only, not for use in diagnostic procedures.

PROTOCOLS

See our web site at www.scbt.com for detailed protocols and support products.

Alexa Fluor[®] is a trademark of Molecular Probes, Inc., Oregon, USA