

Troponin T-C (A-11): sc-515899

BACKGROUND

Actin is a highly conserved protein that is expressed in all eukaryotic cells. Actin filaments can form both stable and labile structures and are crucial components of microvilli and the contractile apparatus of muscle cells. Myosin is a hexamer of two heavy chains (MHC) and four light chains (MLC) that interacts with Actin to generate the force for diverse cellular movements, including cytokinesis, phagocytosis and muscle contraction. Troponin facilitates the interaction between Actin and Myosin by binding to calcium. Troponin is made up of at least two subunits, which are divergent in cardiac muscle, fast skeletal muscle and slow skeletal muscle. Structures of skeletal muscle troponin are composed of Troponin C (the sensor), Troponin I (the regulator) and Troponin T (the link to the muscle thin filament). Troponin C is dumbbell-shaped and has a hydrophobic pocket that increases the contractile force of muscle fibers. Troponin C has two isoforms: fast and slow. Fast Troponin C has two calcium binding sites, while slow/cardiac Troponin C has a single calcium binding site.

CHROMOSOMAL LOCATION

Genetic locus: TNNT2 (human) mapping to 1q32.1; Tnnt2 (mouse) mapping to 1 E4.

SOURCE

Troponin T-C (A-11) is a mouse monoclonal antibody specific for an epitope mapping between amino acids 270-295 near the C-terminus of Troponin T-C of human origin.

PRODUCT

Each vial contains 200 µg IgM kappa light chain in 1.0 ml of PBS with < 0.1% sodium azide and 0.1% gelatin.

STORAGE

Store at 4° C, ****DO NOT FREEZE****. Stable for one year from the date of shipment. Non-hazardous. No MSDS required.

APPLICATIONS

Troponin T-C (A-11) is recommended for detection of Troponin T-C of mouse, rat and human origin by Western Blotting (starting dilution 1:100, dilution range 1:100-1:1000), immunoprecipitation [1-2 µg per 100-500 µg of total protein (1 ml of cell lysate)], immunofluorescence (starting dilution 1:50, dilution range 1:50-1:500), immunohistochemistry (including paraffin-embedded sections) (starting dilution 1:50, dilution range 1:50-1:500) and solid phase ELISA (starting dilution 1:30, dilution range 1:30-1:3000).

Suitable for use as control antibody for Troponin T-C siRNA (h): sc-36740, Troponin T-C siRNA (m): sc-36741, Troponin T-C shRNA Plasmid (h): sc-36740-SH, Troponin T-C shRNA Plasmid (m): sc-36741-SH, Troponin T-C shRNA (h) Lentiviral Particles: sc-36740-V and Troponin T-C shRNA (m) Lentiviral Particles: sc-36741-V.

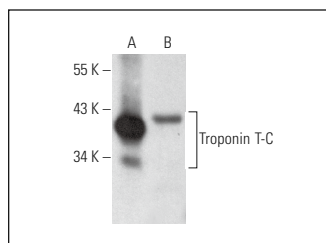
Molecular Weight of Troponin T-C: 39 kDa.

Positive Controls: L8 cell lysate: sc-3807 or human skeletal muscle extract: sc-363776.

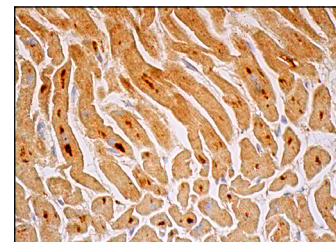
RECOMMENDED SUPPORT REAGENTS

To ensure optimal results, the following support reagents are recommended: 1) Western Blotting: use m-IgGκ BP-HRP: sc-516102 or m-IgGκ BP-HRP (Cruz Marker): sc-516102-CM (dilution range: 1:1000-1:10000), Cruz Marker™ Molecular Weight Standards: sc-2035, UltraCruz® Blocking Reagent: sc-516214 and Western Blotting Luminol Reagent: sc-2048. 2) Immunoprecipitation: use Protein L-Agarose: sc-2336 (0.5 ml agarose/2.0 ml). 3) Immunofluorescence: use m-IgGκ BP-FITC: sc-516140 or m-IgGκ BP-PE: sc-516141 (dilution range: 1:50-1:200) with UltraCruz® Mounting Medium: sc-24941 or UltraCruz® Hard-set Mounting Medium: sc-359850. 4) Immunohistochemistry: use m-IgGκ BP-HRP: sc-516102 with DAB, 50X: sc-24982 and Immunohisto-mount: sc-45086, or Organo/Limonene Mount: sc-45087.

DATA



Troponin T-C (A-11): sc-515899. Western blot analysis of Troponin T-C expression in L8 whole cell lysate (A) and human skeletal muscle tissue extract (B).



Troponin T-C (A-11): sc-515899. Immunoperoxidase staining of formalin fixed, paraffin-embedded human heart muscle tissue showing cytoplasmic staining of myocytes. Blocked with 0.25X UltraCruz® Blocking Reagent: sc-516214. Detection reagents used: m-IgGκ BP-B: sc-516142 and ImmunoCruz® ABC Kit: sc-516216.

SELECT PRODUCT CITATIONS

1. Yuan, Y., et al. 2019. KPC1 alleviates hypoxia/reoxygenation-induced apoptosis in rat cardiomyocyte cells through BAX degradation. J. Cell. Physiol. 234: 22921-22934.

RESEARCH USE

For research use only, not for use in diagnostic procedures.

PROTOCOLS

See our web site at www.scbt.com for detailed protocols and support products.