

m-IgG λ BP-HRP (Cruz Marker): sc-516132-CM

BACKGROUND

Mouse IgG λ light chain binding protein (m-IgG λ BP) is suitable for binding to mouse IgG λ light chain immunoglobulins, comprising approximately 2% of mouse monoclonal primary antibodies; not suitable for use with mouse monoclonal IgG κ light chain primary antibodies. We offer a Cruz Marker™ compatible m-IgG λ BP conjugated to horseradish peroxidase (HRP), m-IgG λ BP-HRP (Cruz Marker), which is used in conjunction with Santa Cruz Biotechnology's Cruz Marker™ molecular weight standards. m-IgG λ BP-HRP (Cruz Marker) recognizes an epitope common to each of the Cruz Marker™ molecular weight standards. m-IgG λ BP-HRP (Cruz Marker) is a strongly recommended alternative to our conventional Cruz Marker™ compatible bovine/donkey/goat/rabbit anti-mouse IgG secondary antibodies for Western Blotting (WB) signal enhancement. Mouse IgG λ light chain binding protein is a highly specific reagent that provides strong signal with minimal background and virtually complete elimination of lot-to-lot variation associated with conventionally generated secondary antibodies. For mouse IgG κ immunoglobulins, comprising a vast majority of mouse IgG monoclonal antibodies; we recommend m-IgG κ BP-HRP (Cruz Marker): sc-516132-CM.

SOURCE

m-IgG λ BP-HRP (Cruz Marker) is a Cruz Marker™ compatible, purified recombinant mouse IgG λ light chain binding protein conjugated to horseradish peroxidase (HRP).

PRODUCT

Each vial contains 200 μ g Cruz Marker™ compatible, mouse IgG λ binding protein-HRP in 0.5 ml of PBS containing 40% glycerol, 1% stabilizer protein and < 0.01% thimerosal.

APPLICATIONS

m-IgG λ BP-HRP (Cruz Marker) is recommended for use with Cruz Marker™ Molecular Weight Standards: sc-2035 and mouse IgG lambda light chain monoclonal antibodies by ECL Western Blotting (starting dilution: 1:1000, dilution range: 1:1000-1:10000). Optimal dilution to be determined by titration.

For Western Blotting using tissue extracts and m-IgG λ BP-HRP (Cruz Marker), we strongly recommend subtracting endogenous immunoglobulins from extracts with Protein G PLUS-Agarose Reagent: sc-2002, to prevent Western Blotting interference when detecting proteins of approximately 25 kDa in size.

STORAGE

Store at 4° C, ****DO NOT FREEZE****. Stable for one year from the date of shipment. Non-hazardous. No MSDS required.

RESEARCH USE

For research use only, not for use in diagnostic procedures.

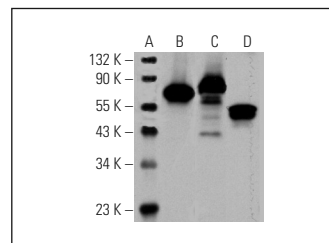
PROTOCOLS

See our web site at www.scbt.com for detailed protocols and support products.

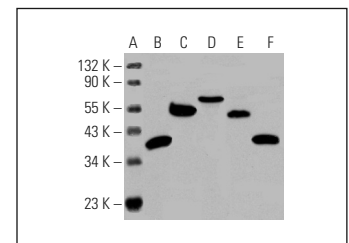
RECOMMENDED SUPPORT PRODUCTS

- Protein G PLUS-Agarose Reagent: sc-2002
- Western Blotting Luminol Reagent, for 2,000 cm² membrane area: sc-2048
- RIPA Lysis Buffer, 50 ml, cell lysis buffer with protease inhibitors: sc-24948
- Electrophoresis Sample Buffer, 2X, 25 ml, reducing buffer: sc-24945
- UltraCruz® Protease Inhibitor Cocktail Tablet, 20 tablets: sc-29130
- Running Buffer, 10X, 1 L, TRIS-Glycine WB running buffer, pH 8.3: sc-24949
- Towbin, with SDS, 10X, 1 L, WB transfer buffer pH 8.3: sc-24954
- TBS Blotto A, lyophilized powder in single-use bottle: sc-2333
- UltraCruz® PVDF Transfer membrane, 0.45 μ m, 30 cm x 3 m roll: sc-3723
- UltraCruz® Nitrocellulose Pure Transfer Membrane, 0.22 μ m, 30 cm x 3 m roll: sc-3718
- UltraCruz® Tissue Culture Dish, 100 mm polystyrene dish: sc-200286
- UltraCruz® Autoradiography Film, Blue, 8 x 1, 100 sheets: sc-201697
- UltraCruz® Gel Incubation Trays, 100 per pack: sc-201755 (blue), sc-201756 (green), sc-201757 (pink), sc-201758 (yellow), sc-201759 (orange)

DATA



m-IgG λ BP-HRP (Cruz Marker): sc-516147. Western blot analysis of Cruz Marker™ molecular weight standards (sc-2035) showing MW markers at 132 kDa, 90 kDa, 55 kDa, 43 kDa, 34 kDa and 23 kDa (A) and HSP 70/HSC 70 (B), transferrin (C), and Pax-5 (D) expression in HeLa whole cell lysate. Lambda chain monoclonal antibodies tested: HSP 70/HSC 70 (W27): sc-24 (B), transferrin (D-9): sc-365871 (C), and Pax-5 (A-11): sc-13146 (D), respectively.



m-IgG κ BP-HRP (Cruz Marker): sc-516102-CM. Western blot analysis of Cruz Marker™ molecular weight standards (sc-2035) showing MW markers at 132 kDa, 90 kDa, 55 kDa, 43 kDa, 34 kDa and 23 kDa (A) and β -Actin (B), HSP 60 (C), Ku-70 (D), α Tubulin (E), and ERK 2 (F) expression in HeLa whole cell lysate.

| PRODUCT | CAT. # | DESCRIPTION | AMOUNT |
|---|--------------|---|-----------------------|
| m-IgG κ BP-HRP (Cruz Marker) | sc-516102-CM | Highly specific reagent that provides strong signal with minimal background and virtually complete elimination of lot-to-lot variation associated with conventionally-generated secondary antibodies. Suitable for binding to mouse IgGκ light chain immunoglobulins, comprising approximately 98% of mouse monoclonal antibodies; not suitable for use with mouse monoclonal IgG λ light chain antibodies. Used in conjunction with Cruz Marker™ molecular weight standards, m-IgG κ BP-HRP (Cruz Marker) recognizes an epitope common to each of the Cruz Marker™ molecular weight standards. | 200 μ g in 0.5 ml |
| Cruz Marker™ Molecular Weight Standards | sc-2035 | For use as internal standards in Western blotting applications. The ladder consists of six bands: 132 kDa, 90 kDa, 55 kDa, 43 kDa, 34 kDa and 23 kDa, which appear on the final Western blot film after incubation with Cruz Marker™ compatible Western blotting binding proteins | 200 μ l |