

m-IgGκ BP-PE: sc-516141

BACKGROUND

Mouse IgGκ light chain binding protein is a strongly recommended alternative to conventional anti-mouse IgG secondary antibodies for immunofluorescence (IF) and flow cytometry (FCM) signal enhancement. Mouse IgGκ light chain binding protein is a highly specific detection reagent that provides strong signal with minimal background and virtually complete elimination of lot-to-lot variation associated with conventionally generated secondary antibodies. Mouse IgGκ light chain binding protein (m-IgGκ BP) conjugated to phycoerythrin (PE) is suitable for binding to mouse IgGκ light chain immunoglobulins, comprising a vast majority of mouse monoclonal primary antibodies; not suitable for use with mouse monoclonal IgGλ light chain primary antibodies. Phycoerythrin (PE) is a red fluorochrome that is very popular for use in flow cytometry research applications.

SOURCE

m-IgGκ BP-PE is a purified recombinant mouse IgGκ light chain binding protein conjugated to phycoerythrin (PE).

PRODUCT

Each vial contains 200 μg mouse IgGκ binding protein-PE in 0.5 ml of PBS containing 0.1% gelatin and 0.1% sodium azide.

APPLICATIONS

m-IgGκ BP-PE is recommended for detection of mouse IgGκ light chain by immunofluorescence (starting dilution 1:50, dilution range 1:50-1:200) and flow cytometry (0.5-1 μg per 1 x 10⁶ cells). Optimal dilution to be determined by titration.

PE excitation/emission spectrum peak wavelengths: 496 nm/578 nm

RECOMMENDED SUPPORT PRODUCTS

- CrystalCruz[®] Cover Glasses, 22 x 50 mm, precleaned: sc-24975
- PBS (Phosphate Buffered Saline), powder, 1 packet: sc-24947
- Formaldehyde, 37% formaldehyde solution, 25 ml: sc-203049
- Hydrogen Peroxide, 30% solution, 100 ml: sc-203336
- FCM Lysing solution: sc-3621
- FCM Fixation Buffer: sc-3622
- FCM Permeabilization Buffer: sc-3623
- FCM Wash Buffer: sc-3624
- Intracellular FCM System: sc-45063

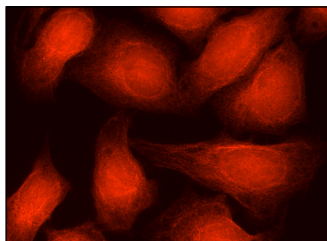
STORAGE

Store at 4° C, ****DO NOT FREEZE****. Stable for one year from the date of shipment. Non-hazardous. No MSDS required.

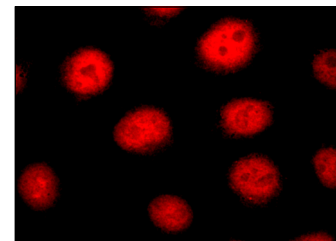
RESEARCH USE

For research use only, not for use in diagnostic procedures.

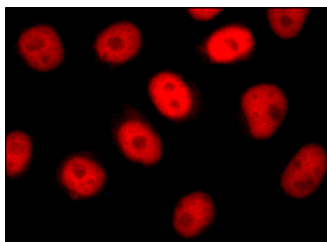
DATA



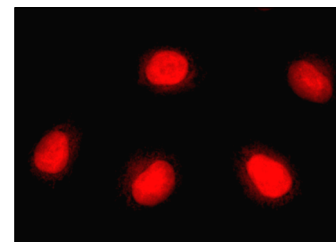
m-IgGκ BP-PE: sc-516141. Immunofluorescence detection of SH3D19 in formalin-fixed HeLa cells showing cytoplasmic, membrane and nuclear localization. Antibody tested: SH3D19 (G-6): sc-377282.



m-IgGκ BP-PE: sc-516141. Immunofluorescence detection of Ku-86 staining of formalin-fixed HeLa cells showing nuclear localization. Antibody tested: Ku-86 (B-1): sc-5280.



m-IgGκ BP-PE: sc-516141. Immunofluorescence detection of EWS in formalin-fixed HeLa cells showing nuclear localization. Antibody tested: EWS (C-9): sc-48404.



m-IgGκ BP-PE: sc-516141. Immunofluorescence detection of CtBP in formalin-fixed HeLa cells showing nuclear localization. Antibody tested: CtBP (E-12): sc-17759.

PROTOCOLS

See our web site at www.scbt.com or our catalog for detailed protocols and support products.