

mouse anti-goat IgG-CFL 790: sc-516246

BACKGROUND

Santa Cruz Biotechnology's high quality, well characterized monoclonal secondary antibodies are available conjugated to either an enzyme, biotin or fluorophore for use in a variety of antibody-based applications, including Western blotting, immunostaining and flow cytometry. Santa Cruz secondary antibodies are commonly affinity purified against immobilized whole IgG isotypes, including IgG₁, IgG_{2a}, IgG_{2b}, IgG₃ and IgG₄. Monoclonal secondary antibodies are available conjugated to HRP for Western blotting (WB) and immunohistochemistry (IHC); (CM) or Cruz Marker form of HRP conjugated secondary antibodies are suitable for use with our Cruz Marker™ molecular weight standards; FITC (fluorescein isothiocyanate), PE (phycoerythrin), R (TRITC: tetramethyl rhodamine isothiocyanate), TR (Texas Red®), PerCP (peridinin chlorophyll protein complex), PerCP-Cy5.5 (peridinin chlorophyll protein complex with cyanin-5.5), and CruzFluor™ (488, 555, 594 and 647) for immunofluorescence (IF), immunohistochemistry (IHC) and flow cytometry (FCM); B (biotin) for immunohistochemistry (IHC); AP (alkaline phosphatase) for Western blotting (WB); and CruzFluor® 680 and 790 for near-infrared (NIR) Western blotting (WB), immunofluorescence (IF), immunohistochemistry (IHC) and flow cytometry (FCM).

SOURCE

mouse anti-goat IgG-CFL 790 is a pre-adsorbed, affinity purified secondary antibody raised in mouse against goat IgG and conjugated to CruzFluor™ 790 (CFL 790).

PRODUCT

Each vial contains 200 µg mouse IgG (pre-adsorbed with human IgG) in 0.5 ml of PBS containing 0.1% gelatin and 0.1% sodium azide.

APPLICATIONS

mouse anti-goat IgG-CFL 790 is recommended for detection of goat IgG by NIR Western blotting (starting dilution: 1:100, dilution range: 1:100-1:400), immunofluorescence staining (starting dilution: 1:100, dilution range: 1:100-1:400), immunohistochemical staining (starting dilution: 1:100, dilution range: 1:100-1:400) and flow cytometry (0.5-1 µg per 1 x 10⁶ cells). Optimal dilution to be determined by titration.

STORAGE

Store at 4° C, ****DO NOT FREEZE****. Stable for one year from the date of shipment. Non-hazardous. No MSDS required.

PROTOCOLS

See our web site at www.scbt.com for detailed protocols and support products.

RECOMMENDED SUPPORT PRODUCTS

A. TISSUE CULTURE CELLS

- CrystalCruz™ Cover Glasses, 22 x 50 mm, precleaned: sc-24975
- PBS (Phosphate Buffered Saline), powder, 1 packet: sc-24947
- Hydrogen Peroxide, 30% solution, 100 ml: sc-203336

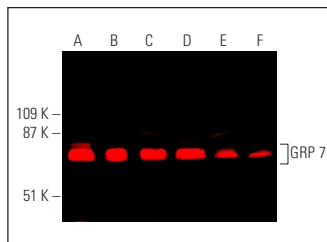
B. FROZEN TISSUE SECTIONS

- Organo/Limonene Mount, non-toxic alternative to Permount, 100 ml: sc-45087
- UltraCruz® Mounting Medium, aqueous-based, 10 ml: sc-24941
- ImmunoHistoMount, aqueous-based mounting medium, 30 ml: sc-45086
- Immuno In Situ Mount, for use with *in situ* hybridization, 30 ml: sc-45088

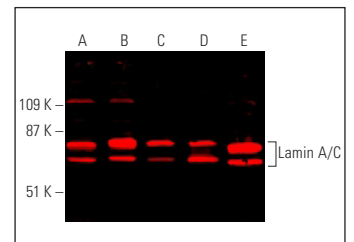
C. FORMALIN-FIXED, PARAFFIN-EMBEDDED TISSUE SECTIONS

- Paraffin, for the preparation of tissue samples for staining, 500 g: sc-286633
- Xylenes, mixed isomers with ethylbenzene, 500 ml: sc-237422
- Hematoxylin, Gill's Formulation #2; nuclear counter stain, 100 ml: sc-24973

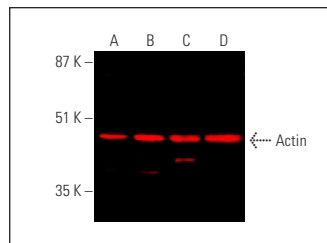
DATA



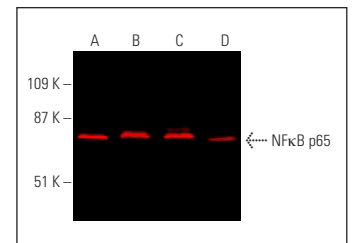
GRP 78 (N-20): sc-1050. Near-infrared western blot analysis of GRP 78 expression in Jurkat (A), HeLa (B), Hep G2 (C), JAR (D), NIH/3T3 (E) and KNRK (F) whole cell lysates. Detection reagent used: mouse anti-goat IgG-CFL 790: sc-516246.



Lamin A/C (N-18): sc-6215. Near-infrared western blot analysis of Lamin A/C expression in FHS 173We (A), HeLa (B), CCD-1064Sk (C), WI-38 (D) and NIH/3T3 (E) whole cell lysates. Detection reagent used: mouse anti-goat IgG-CFL 790: sc-516246.



Actin (C-11): sc-1615. Near-infrared western blot analysis of Actin expression in A-431 (A), C32 (B), Sol8 (C) and KNRK (D) whole cell lysates. Detection reagent used: mouse anti-goat IgG-CFL 790: sc-516246.



NfκB p65 (C-20)-G: sc-372-G. Near-infrared western blot analysis of NfκB p65 expression in A-431 (A), HUV-EC-C (B), T24 (C) and NIH/3T3 (D) whole cell lysates. Detection reagent used: mouse anti-goat IgG-CFL 790: sc-516246.

RESEARCH USE

For research use only, not for use in diagnostic procedures.