

# Cruz Marker™ MW Tag-HRP: sc-516732

## BACKGROUND

Santa Cruz Biotechnology offers Cruz Marker™ Molecular Weight Standards (sc-2035) for use as internal standards in Western Blotting (WB) applications. The ladder consists of six bands: 132 kDa, 90 kDa, 55 kDa, 43 kDa, 34 kDa and 23 kDa, which appear on the final Western blot image after detection with Cruz Marker™ MW Tag antibodies, which recognize an epitope common to each of the Cruz Marker™ molecular weight standards.

Cruz Marker™ MW Tag is offered in multiple formats to allow direct or indirect enhanced chemiluminescence (ECL), or Near-Infrared (NIR) fluorescence visualization of the Cruz Marker™ MW Standards in Western Blotting, when used in conjunction with unconjugated kappa light chain mouse monoclonal antibodies, or ImmunoCruz® primary antibodies conjugated to either horseradish peroxidase (HRP), Alexa Fluor® 680 or Alexa Fluor® 790.

Unconjugated Cruz Marker™ MW Tag is a mouse IgG, kappa light chain antibody that can be detected using SCBT's mouse IgG kappa binding protein (m-IgGκ BP) conjugated to HRP (sc-516102) for Indirect ECL detection, and conjugated to CFL-680 (sc-516180), or CFL-790 (sc-516181) for Indirect NIR detection.

Cruz Marker™ MW Tag is also available as HRP conjugate, for Direct ECL detection, and as Alexa Fluor® 680 and Alexa Fluor® 790 conjugates, for Direct NIR detection.

## CRUZ MARKER™ MW TAG ANTIBODIES

PRODUCT	CAT. #	USE WITH	DETECTION TYPE
Cruz Marker™ MW Tag (unconjugated)	sc-516729	Mouse IgG kappa light chain monoclonal antibody	Indirect ECL detection with m-IgGκ BP-HRP (sc-516102) Indirect NIR detection with m-IgGκ BP-CFL 680 (sc-516180) Indirect NIR detection with m-IgGκ BP-CFL 790 (sc-516181)
Cruz Marker™ MW Tag-Alexa Fluor® 680	sc-516730	ImmunoCruz® primary antibody conjugated to Alexa Fluor® 680	Direct NIR detection
Cruz Marker™ MW Tag-Alexa Fluor® 790	sc-516731	ImmunoCruz® primary antibody conjugated to Alexa Fluor® 790	Direct NIR detection
Cruz Marker™ MW Tag-HRP	sc-516732	ImmunoCruz® primary antibody conjugated to HRP	Direct ECL detection

## PRODUCT

Each vial contains 500 µl of HRP-conjugated mouse IgG kappa light chain antibody, sufficient for 50 gels. Contains PBS with 50% glycerol, 1% carrier protein and < 0.01% thimerosal.

## APPLICATIONS

Cruz Marker™ MW Tag-HRP is recommended for Direct ECL visualization of Cruz Marker™ Molecular Weight Standards (sc-2035) in Western Blotting, when using ImmunoCruz® primary antibodies conjugated to horseradish peroxidase (HRP).

## STORAGE

Store at 4° C, \*\*DO NOT FREEZE\*\*. Stable for one year from the date of shipment. Non-hazardous. No SDS required.

## PROCEDURE

Mix the HRP-conjugated ImmunoCruz® primary antibody and the Cruz Marker™ MW Tag-HRP in Blotto (sc-2324, sc-2333 or sc-2335). Incubate membrane in this mixture for 2 hours at room temperature, with shaking. Wash membrane and proceed with chemiluminescent detection.

Cruz Marker™ MW Tag-HRP starting dilution: 1:1000; dilution range: 1:1000-1:2000.

HRP-conjugated ImmunoCruz® primary antibody starting dilution: 1:100; dilution range: 1:100-1:400.

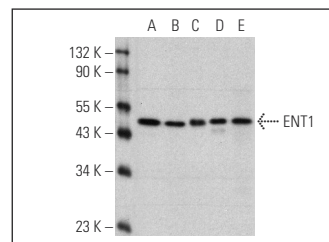
Optimal dilutions to be determined by titration.

For optimal ECL detection using HRP-conjugated antibodies, use Blotto (sc-2324, sc-2333, sc-2334) for both, membrane blocking and antibody dilutions.

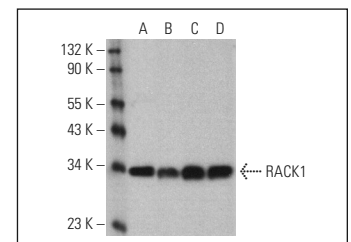
## RECOMMENDED SUPPORT PRODUCTS

- Cruz Marker™ Molecular Weight Standards: sc-2035
- UltraCruz® PVDF Transfer Membrane: sc-3723
- Blotto, non-fat dry milk: sc-2324
- TBS Blotto A: sc-2333
- TBS Blotto B: sc-2334
- Tween-20: sc-29113
- Electrophoresis Sample Buffer, 2X, 25 ml, reducing buffer: sc-24945
- Running Buffer, 10X, 1 L, TRIS Glycine WB running buffer, pH 8.3: sc-24949
- UltraCruz® Gel Incubation Trays: sc-201755 (blue), sc-201756 (green), sc-201757 (pink), sc-201758 (yellow), sc-201759 (orange)
- Western Blot Luminol Reagent: sc-2048
- UltraCruz® Autoradiography Film, Blue, 8 x 1, 100 sheets: sc-201697

## DATA



ENT1 (F-12) HRP: sc-377283 HRP. Direct western blot analysis of ENT1 expression in EOC 20 whole cell lysate (A) and mouse liver (B), mouse brain (C), rat brain (D) and rat heart (E) tissue extracts. Cruz Marker™ Molecular Weight Standards detected with Cruz Marker MW Tag-HRP: sc-516732.



RACK1 (B-3) HRP: sc-17754 HRP. Direct western blot analysis of RACK1 expression in Jurkat (A), WEHI-231 (B), F9 (C) and KNRK (D) whole cell lysates. Cruz Marker™ Molecular Weight Standards detected with Cruz Marker MW Tag-HRP: sc-516732.

## RESEARCH USE

For research use only, not for use in diagnostic procedures

Alexa Fluor® is a trademark of Molecular Probes, Inc., Oregon, USA