

Cdc20B (2F2): sc-517066

BACKGROUND

WD-repeats are motifs that are found in a variety of proteins and are characterized by a conserved core of 40-60 amino acids that commonly form a tertiary propeller structure. While proteins that contain WD-repeats participate in a wide range of cellular functions, they are generally involved in regulatory mechanisms concerning chromatin assembly, cell cycle control, signal transduction, RNA processing, apoptosis and vesicular trafficking. Cdc20B (cell division cycle 20 homolog B) is a 519 amino acid protein that contains 7 WD repeats and is thought to play a role in cell cycle control. Multiple isoforms of Cdc20B exist due to alternative splicing events. The gene encoding Cdc20B maps to human chromosome 5, which contains 181 million base pairs and comprises nearly 6% of the human genome. Deletion of the p arm of chromosome 5 leads to Cri du chat syndrome, while deletion of the q arm or of chromosome 5 altogether is common in therapy-related acute myelogenous leukemias and myelodysplastic syndrome.

REFERENCES

1. van der Voorn, L. and Ploegh, H.L. 1992. The WD-40 repeat. *FEBS Lett.* 307: 131-134.
2. Neer, E.J., et al. 1994. The ancient regulatory-protein family of WD-repeat proteins. *Nature* 371: 297-300.
3. Garcia-Higuera, I., et al. 1996. Folding of proteins with WD-repeats: comparison of six members of the WD-repeat superfamily to the G protein β subunit. *Biochemistry* 35: 13985-13994.
4. Garcia-Higuera, I., et al. 1998. Folding a WD repeat propeller. Role of highly conserved aspartic acid residues in the G protein β subunit and Sec13. *J. Biol. Chem.* 273: 9041-9049.
5. Smith, T.F., et al. 1999. The WD repeat: a common architecture for diverse functions. *Trends Biochem. Sci.* 24: 181-185.
6. Li, D. and Roberts, R. 2001. WD-repeat proteins: structure characteristics, biological function, and their involvement in human diseases. *Cell. Mol. Life Sci.* 58: 2085-2097.

CHROMOSOMAL LOCATION

Genetic locus: CDC20B (human) mapping to 5q11.2.

SOURCE

Cdc20B (2F2) is a mouse monoclonal antibody raised against amino acids 416-515 representing partial length Cdc20B of human origin.

PRODUCT

Each vial contains 100 μ g IgG₁ kappa light chain in 1.0 ml of PBS with < 0.1% sodium azide and 0.1% gelatin.

STORAGE

Store at 4° C, ****DO NOT FREEZE****. Stable for one year from the date of shipment. Non-hazardous. No MSDS required.

APPLICATIONS

Cdc20B (2F2) is recommended for detection of Cdc20B of human origin by Western Blotting (starting dilution 1:200, dilution range 1:100-1:1000), immunoprecipitation [1-2 μ g per 100-500 μ g of total protein (1 ml of cell lysate)], immunofluorescence (starting dilution 1:50, dilution range 1:50-1:500) and solid phase ELISA (starting dilution 1:30, dilution range 1:30-1:3000).

Suitable for use as control antibody for Cdc20B siRNA (h): sc-91769, Cdc20B shRNA Plasmid (h): sc-91769-SH and Cdc20B shRNA (h) Lentiviral Particles: sc-91769-V.

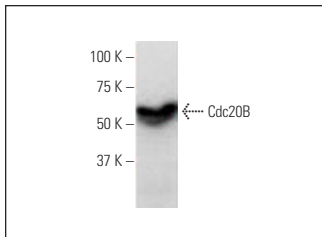
Molecular Weight of Cdc20B: 57 kDa.

Positive Controls: IMR-32 cell lysate: sc-2409.

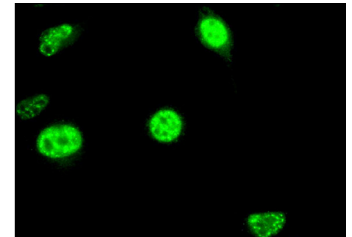
RECOMMENDED SUPPORT REAGENTS

To ensure optimal results, the following support reagents are recommended: 1) Western Blotting: use m-IgG κ BP-HRP: sc-516102 or m-IgG κ BP-HRP (Cruz Marker): sc-516102-CM (dilution range: 1:1000-1:10000), Cruz Marker™ Molecular Weight Standards: sc-2035, TBS Blotto A Blocking Reagent: sc-2333 and Western Blotting Luminol Reagent: sc-2048. 2) Immunoprecipitation: use Protein A/G PLUS-Agarose: sc-2003 (0.5 ml agarose/2.0 ml). 3) Immunofluorescence: use m-IgG κ BP-FITC: sc-516140 or m-IgG κ BP-PE: sc-516141 (dilution range: 1:50-1:200) with UltraCruz® Mounting Medium: sc-24941 or UltraCruz® Hard-set Mounting Medium: sc-359850.

DATA



Cdc20B (2F2); sc-517066. Western blot analysis of Cdc20B expression in IMR-32 whole cell lysate.



Cdc20B (2F2); sc-517066. Immunofluorescence staining of methanol-fixed HeLa cells showing nuclear localization.

RESEARCH USE

For research use only, not for use in diagnostic procedures.

PROTOCOLS

See our web site at www.scbt.com for detailed protocols and support products.