

Rab 28 (2C6): sc-517146

BACKGROUND

Ras-related GTPases are GTP-dependent switches that operate signaling pathways in cell growth, metabolism and organelle trafficking. Rab 28, also known as MGC41862, is a 221 amino acid protein that belongs to the small GTPase superfamily and the Rab family. Rab 28 is only distantly related to other Rab family members, sharing 31 to 33% amino acid identity with Rab 1A, Rab 6, Rab 11 and Rab 13. Rab 28 is expressed as two isoforms, designated S and L respectively, that are produced by alternative splicing events. Isoform S is detected in most tissues including cortex, liver, kidney, skeletal muscle, adipose tissue, testis and urothelium, where as isoform L is predominantly expressed in testis. Existing as two alternatively spliced isoforms, the Rab 28 gene is conserved in chimpanzee, canine, bovine, mouse, rat, chicken and *C. elegans*, and maps to human chromosome 4p15.33. Pseudogenes of the Rab 28 gene are found on chromosomes 9 and X.

REFERENCES

1. Brauers, A., et al. 1996. Alternative mRNA splicing of the novel GTPase Rab 28 generates isoforms with different C-termini. *Eur. J. Biochem.* 237: 833-840.
2. Pereira-Leal, J.B. and Seabra, M.C. 2000. The mammalian Rab family of small GTPases: definition of family and subfamily sequence motifs suggests a mechanism for functional specificity in the Ras superfamily. *J. Mol. Biol.* 301: 1077-1087.
3. Stenmark, H. and Olkkonen, V.M. 2001. The Rab GTPase family. *Genome Biol.* 2: REVIEWS3007.
4. Maurer-Stroh, S., et al. 2007. Towards complete sets of farnesylated and geranylgeranylated proteins. *PLoS Comput. Biol.* 3: e66.
5. Lee, S.H., et al. 2008. Large nucleotide-dependent conformational change in Rab 28. *FEBS Lett.* 582: 4107-4111.
6. Online Mendelian Inheritance in Man, OMIM[™]. 2009. Johns Hopkins University, Baltimore, MD. MIM Number: 612994. World Wide Web URL: <http://www.ncbi.nlm.nih.gov/omim/>

CHROMOSOMAL LOCATION

Genetic locus: RAB28 (human) mapping to 4p15.33.

SOURCE

Rab 28 (2C6) is a mouse monoclonal antibody raised against amino acids 1-95 representing full length Rab 28 of human origin.

PRODUCT

Each vial contains 100 µg IgG_{2a} kappa light chain in 1.0 ml of PBS with < 0.1% sodium azide and 0.1% gelatin.

STORAGE

Store at 4° C, **DO NOT FREEZE**. Stable for one year from the date of shipment. Non-hazardous. No MSDS required.

APPLICATIONS

Rab 28 (2C6) is recommended for detection of Rab 28 of human origin by Western Blotting (starting dilution 1:200, dilution range 1:100-1:1000), immunoprecipitation [1-2 µg per 100-500 µg of total protein (1 ml of cell lysate)] and solid phase ELISA (starting dilution 1:30, dilution range 1:30-1:3000).

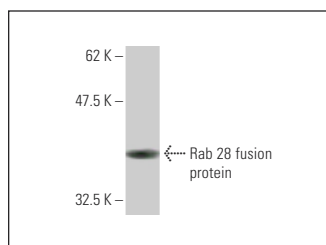
Suitable for use as control antibody for Rab 28 siRNA (h): sc-89156, Rab 28 shRNA Plasmid (h): sc-89156-SH and Rab 28 shRNA (h) Lentiviral Particles: sc-89156-V.

Molecular Weight of Rab 28: 25 kDa.

RECOMMENDED SUPPORT REAGENTS

To ensure optimal results, the following support reagents are recommended: 1) Western Blotting: use m-IgGκ BP-HRP: sc-516102 or m-IgGκ BP-HRP (Cruz Marker): sc-516102-CM (dilution range: 1:1000-1:10000), Cruz Marker[™] Molecular Weight Standards: sc-2035, TBS Blotto A Blocking Reagent: sc-2333 and Western Blotting Luminol Reagent: sc-2048. 2) Immunoprecipitation: use Protein A/G PLUS-Agarose: sc-2003 (0.5 ml agarose/2.0 ml).

DATA



Rab 28 (2C6): sc-517146. Western blot analysis of human recombinant Rab 28 fusion protein.

RESEARCH USE

For research use only, not for use in diagnostic procedures.

PROTOCOLS

See our web site at www.scbt.com for detailed protocols and support products.