

G_γ 5 (3B8): sc-517161

BACKGROUND

Heterotrimeric G proteins function to relay information from cell surface receptors to intracellular effectors. Each of a very broad range of receptors specifically detects an extracellular stimulus (i.e. a photon, pheromone, odorant, hormone or neurotransmitter), while the effectors (e.g. adenylyl cyclase), which act to generate one or more intracellular messengers, are less numerous. In mammals, G protein α , β and γ polypeptides are encoded by at least 16, 4 and 7 genes, respectively. Most interest in G proteins has been focused on their α subunits, since these proteins bind and hydrolyze GTP and most obviously regulate the activity of the best studied effectors. Evidence, however, has established an important regulatory role for the $\beta\gamma$ subunits. It is becoming increasingly clear that different G protein complexes expressed in different tissues carry structurally distinct members of the γ as well as the α and β subunits, and that preferential associations between members of subunit families increase G protein functional diversity.

REFERENCES

- Blatt, C., et al. 1988. Chromosomal localization of genes encoding guanine nucleotide-binding protein subunits in mouse and human. *Proc. Natl. Acad. Sci.* 85: 7642-7646.
- Gautam, N., et al. 1990. G protein diversity is increased by associations with a variety of γ subunits. *Proc. Natl. Acad. Sci. USA* 87: 7973-7977.
- Simon, M.I., et al. 1991. Diversity of G proteins in signal transduction. *Science* 252: 802-808.
- von Weizsäcker, E., et al. 1992. Diversity among the β subunits of heterotrimeric GTP-binding proteins: characterization of a novel β subunit cDNA. *Biochem. Biophys. Res. Commun.* 183: 350-356.
- Kleuss, C., et al. 1992. Different β subunits determine G protein interaction with transmembrane receptors. *Nature* 358: 424-426.
- Blank, J.L., et al. 1992. Activation of cytosolic phosphoinositide phospholipase C by G protein $\beta\gamma$ subunits. *J. Biol. Chem.* 267: 23069-23075.
- Hurowitz, E.H., et al. 2000. Genomic characterization of the human heterotrimeric G protein α , β and γ subunit genes. *DNA Res.* 7: 111-120.

CHROMOSOMAL LOCATION

Genetic locus: GNG5 (human) mapping to 1p22.3; Gng5 (mouse) mapping to 3 H2.

SOURCE

G_γ 5 (3B8) is a mouse monoclonal antibody raised against amino acids 1-68 representing full length G_γ 5 of human origin.

PRODUCT

Each vial contains 100 μ g IgG_{2a} kappa light chain in 1.0 ml PBS with < 0.1% sodium azide and 0.1% gelatin.

STORAGE

Store at 4° C, ****DO NOT FREEZE****. Stable for one year from the date of shipment. Non-hazardous. No MSDS required.

APPLICATIONS

G_γ 5 (3B8) is recommended for detection of G_γ 5 of mouse, rat and human origin by Western Blotting (starting dilution 1:200, dilution range 1:100-1:1000), immunoprecipitation [1-2 μ g per 100-500 μ g of total protein (1 ml of cell lysate)] and solid phase ELISA (starting dilution 1:30, dilution range 1:30-1:3000).

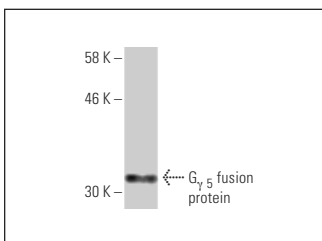
Suitable for use as control antibody for G_γ 5 siRNA (h): sc-41778, G_γ 5 siRNA (m): sc-41779, G_γ 5 shRNA Plasmid (h): sc-41778-SH, G_γ 5 shRNA Plasmid (m): sc-41779-SH, G_γ 5 shRNA (h) Lentiviral Particles: sc-41778-V and G_γ 5 shRNA (m) Lentiviral Particles: sc-41779-V.

Molecular Weight of G_γ 5: 8 kDa.

RECOMMENDED SUPPORT REAGENTS

To ensure optimal results, the following support reagents are recommended: 1) Western Blotting: use m-IgG κ BP-HRP: sc-516102 or m-IgG κ BP-HRP (Cruz Marker): sc-516102-CM (dilution range: 1:1000-1:10000), Cruz Marker™ Molecular Weight Standards: sc-2035, TBS Blotto A Blocking Reagent: sc-2333 and Western Blotting Luminol Reagent: sc-2048. 2) Immunoprecipitation: use Protein A/G PLUS-Agarose: sc-2003 (0.5 ml agarose/2.0 ml).

DATA



G_γ 5 (3B8): sc-517161. Western blot analysis of human recombinant G_γ 5 fusion protein.

RESEARCH USE

For research use only, not for use in diagnostic procedures.

PROTOCOLS

See our web site at www.scbt.com for detailed protocols and support products.