

ZIP10 (1F6): sc-517167

BACKGROUND

ZIP10 (zinc transporter ZIP10, solute carrier family 39 member 10) is a multi-pass (7 transmembrane regions) membrane protein that belongs to the ZIP transporter (TC 2.A.5) family. Zinc transporters all have transmembrane domains, and are encoded by two SLC (solute-linked carrier) gene families: ZnT (SLC30) and ZIP (SLC39). There are at least 9 ZnT and 15 ZIP transporters in human cells. ZIP transporters are believed to increase intracellular zinc by promoting zinc uptake. This may be facilitated by vesicles within the cell that release release into the cytoplasm. ZIP and ZnT transporter families exhibit tissue-specific expression and respond differently to zinc deficiency and excess. High expression levels of ZIP10 can be correlated with invasiveness of several metastatic breast cancers.

REFERENCES

- Liuzzi, J.P. and Cousins, R.J. 2004. Mammalian zinc transporters. *Annu. Rev. Nutr.* 24: 151-172.
- Kaler, P. and Prasad, R. 2007. Molecular cloning and functional characterization of novel zinc transporter rZIP10 (Slc39a10) involved in zinc uptake across rat renal brush-border membrane. *Am. J. Physiol. Renal Physiol.* 292: F217-F229.
- Pawan, K., et al. 2007. Upregulation of Slc39a10 gene expression in response to thyroid hormones in intestine and kidney. *Biochim. Biophys. Acta* 1769: 117-123.
- Kagara, N., et al. 2007. Zinc and its transporter ZIP10 are involved in invasive behavior of breast cancer cells. *Cancer Sci.* 98: 692-697.
- Valentine, R.A., et al. 2007. ZnT5 variant B is a bidirectional zinc transporter and mediates zinc uptake in human intestinal Caco-2 cells. *J. Biol. Chem.* 282: 14389-14393.
- Ryu, M.S., et al. 2008. Zinc transporters ZnT1 (Slc30a1), ZIP8 (Slc39a8), and ZIP10 (Slc39a10) in mouse red blood cells are differentially regulated during erythroid development and by dietary zinc deficiency. *J. Nutr.* 138: 2076-2083.
- Zheng, D., et al. 2008. Regulation of ZIP and ZnT zinc transporters in zebrafish gill: zinc repression of ZIP10 transcription by an intronic MRE cluster. *Physiol. Genomics* 34: 205-214.
- Lichten, L.A. and Cousins, R.J. 2009. Mammalian zinc transporters: nutritional and physiologic regulation. *Annu. Rev. Nutr.* 29: 153-176.
- Egefjord, L., et al. 2010. Zinc, a cells and glucagon secretion. *Curr. Diabetes Rev.* 6: 52-57.

CHROMOSOMAL LOCATION

Genetic locus: SLC39A10 (human) mapping to 2q32.3.

SOURCE

ZIP10 (1F6) is a mouse monoclonal antibody raised against amino acids 514-621 representing partial length ZIP10 of human origin.

PRODUCT

Each vial contains 100 µg IgG₁ kappa light chain in 1.0 ml of PBS with < 0.1% sodium azide and 0.1% gelatin.

APPLICATIONS

ZIP10 (1F6) is recommended for detection of ZIP10 of human origin by Western Blotting (starting dilution 1:200, dilution range 1:100-1:1000), immunoprecipitation [1-2 µg per 100-500 µg of total protein (1 ml of cell lysate)] and solid phase ELISA (starting dilution 1:30, dilution range 1:30-1:3000).

Suitable for use as control antibody for ZIP10 siRNA (h): sc-94302, ZIP10 shRNA Plasmid (h): sc-94302-SH and ZIP10 shRNA (h) Lentiviral Particles: sc-94302-V.

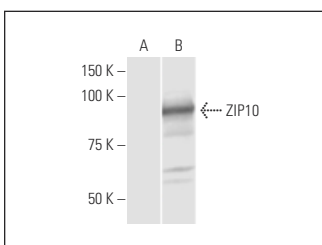
Molecular Weight of ZIP10: 40 kDa.

Positive Controls: ZIP10 transfected 293T whole cell lysate.

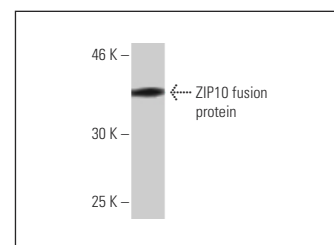
RECOMMENDED SUPPORT REAGENTS

To ensure optimal results, the following support reagents are recommended: 1) Western Blotting: use m-IgGκ BP-HRP: sc-516102 or m-IgGκ BP-HRP (Cruz Marker): sc-516102-CM (dilution range: 1:1000-1:10000), Cruz Marker™ Molecular Weight Standards: sc-2035, TBS Blotto A Blocking Reagent: sc-2333 and Western Blotting Luminol Reagent: sc-2048. 2) Immunoprecipitation: use Protein A/G PLUS-Agarose: sc-2003 (0.5 ml agarose/2.0 ml).

DATA



ZIP10 (1F6): sc-517167. Western blot analysis of ZIP10 expression in non-transfected (A) and ZIP10 transfected (B) 293T whole cell lysates.



ZIP10 (1F6): sc-517167. Western blot analysis of human recombinant ZIP10 fusion protein.

STORAGE

Store at 4° C, **DO NOT FREEZE**. Stable for one year from the date of shipment. Non-hazardous. No MSDS required.

RESEARCH USE

For research use only, not for use in diagnostic procedures.

PROTOCOLS

See our web site at www.scbt.com for detailed protocols and support products.