

CCRK (885CT27.1.1): sc-517320

BACKGROUND

CCRK (cell cycle related kinase), also known as p42 or CDCH, is a 346 amino acid nuclear protein that is involved in cell growth. Expressed in several different tissues throughout the body, CCRK functions to catalytically phosphorylate the Thr 160 residue on the cell cycle protein Cdk2 (cyclin-dependent kinase 2), thereby activating Cdk2 and allowing the cell cycle to progress. Due to its ability to control cell cycle events, CCRK is thought to be a potential oncogene in several carcinomas including glioblastoma multiforme, an aggressive primary brain tumor. Overexpression of CCRK leads to increased rates of glioblastoma tumor growth, while suppression of CCRK decreases the rate of glioblastoma tumor growth, further supporting its role as a potential oncogene. CCRK exists as a monomer and is expressed as three different isoforms produced by alternative splicing events.

REFERENCES

1. Online Mendelian Inheritance in Man, OMIM™. 2002. Johns Hopkins University, Baltimore, MD. MIM Number: 610076. World Wide Web URL: <http://www.ncbi.nlm.nih.gov/omim/>
2. Liu, Y., Wu, C. and Galaktionov, K. 2004. p42, a novel cyclin-dependent kinase-activating kinase in mammalian cells. *J. Biol. Chem.* 279: 4507-4514.
3. Caligiuri, M., Becker, F., Murthi, K., Kaplan, F., Dedier, S., Kaufmann, C., Machl, A., Zybarth, G., Richard, J., Bockovich, N., Kluge, A. and Kley, N. 2005. A proteome-wide CDK/CRK-specific kinase inhibitor promotes tumor cell death in the absence of cell cycle progression. *Chem. Biol.* 12: 1103-1115.
4. Wohlbold, L., Larochelle, S., Liao, J.C., Livshits, G., Singer, J., Shokat, K.M. and Fisher, R.P. 2006. The cyclin-dependent kinase (CDK) family member PNQALRE/CCRK supports cell proliferation but has no intrinsic CDK-activating kinase (CAK) activity. *Cell Cycle* 5: 546-554.
5. Abbas, T. and Dutta, A. 2006. CDK2-activating kinase (CAK): more questions than answers. *Cell Cycle* 5: 1123-1124.
6. Ng, S.S., Cheung, Y.T., An, X.M., Chen, Y.C., Li, M., Li, G.H., Cheung, W., Sze, J., Lai, L., Peng, Y., Xia, H.H., Wong, B.C., Leung, S.Y., Xie, D., He, M.L., Kung, H.F. and Lin, M.C. 2007. Cell cycle-related kinase: a novel candidate oncogene in human glioblastoma. *J. Natl. Cancer Inst.* 99: 936-948.

CHROMOSOMAL LOCATION

Genetic locus: CDK20 (human) mapping to 9q22.1.

SOURCE

CCRK (885CT27.1.1) is a mouse monoclonal antibody raised against purified His-tagged CCRK protein fragment of human origin.

PRODUCT

Each vial contains 100 µg IgG₁ in 1.0 ml of PBS with < 0.1% sodium azide and 0.1% gelatin.

RESEARCH USE

For research use only, not for use in diagnostic procedures.

APPLICATIONS

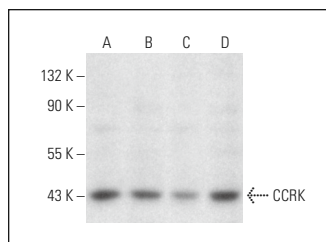
CCRK (885CT27.1.1) is recommended for detection of CCRK of human origin by Western Blotting (starting dilution 1:200, dilution range 1:100-1:1000) and immunoprecipitation [1-2 µg per 100-500 µg of total protein (1 ml of cell lysate)].

Suitable for use as control antibody for CCRK siRNA (h): sc-92544, CCRK shRNA Plasmid (h): sc-92544-SH and CCRK shRNA (h) Lentiviral Particles: sc-92544-V.

Molecular Weight of CCRK: 40 kDa.

Positive Controls: A549 cell lysate: sc-2413, MCF7 whole cell lysate: sc-2206 or Hep G2 cell lysate: sc-2227.

DATA



CCRK (885CT27.1.1): sc-517320. Western blot analysis of CCRK expression in MCF7 (A), A549 (B), Hep G2 (C) and HCT-116 (D) whole cell lysates.

STORAGE

Store at 4° C, **DO NOT FREEZE** Stable for one year from the date of shipment. Non-hazardous. No MSDS required.

PROTOCOLS

See our web site at www.scbt.com for detailed protocols and support products.