

# EphA6 (1426CT591.205.91.119): sc-517327

## BACKGROUND

The Eph subfamily represents the largest group of receptor protein tyrosine kinases identified to date. While the biological activities of these receptors have yet to be determined, there is increasing evidence that they are involved in central nervous system function and in development. The Eph subfamily receptors of human origin (and their murine/avian homologs) include EphA1 (Eph), EphA2 (Eck), EphA3 (Hek4), EphA4 (Hek8), EphA5 (Hek7), EphA6 (Hek12), EphA7 (Hek11/MDK1), EphA8 (Hek3), EphB1 (Hek6), EphB2 (Hek5), EphB3 (Cek10, Hek2), EphB4 (Htk), EphB5 (Hek9) and EphB6 (Mep). Ligands for Eph receptors include ephrin-A4 (LERK-4) which binds EphA3 and EphB1. In addition, ephrin-A2 (ELF-1) has been described as the ligand for EphA4, ephrin-A3 (Ehk1-L) as the ligand for EphA5 and ephrin-B2 (Htk-L) as the ligand for EphB4 (Htk).

## REFERENCES

1. Beckmann, M.P., et al. 1994. Molecular characterization of a family of ligands for Eph-related tyrosine kinase receptors. *EMBO J.* 13: 3757-3762.
2. Cheng, H.J., et al. 1994. Identification and cloning of ELF-1, a developmentally expressed ligand for the Mek4 and Sek receptor tyrosine kinases. *Cell* 79: 157-168.
3. Ciossek, T., et al. 1995. Identification of alternatively spliced mRNAs encoding variants of MDK1, a novel receptor tyrosine kinase expressed in the murine nervous system. *Oncogene* 10: 97-108.
4. Kozlosky, C.J., et al. 1995. Ligands for the receptor tyrosine kinases Hek and Elk: isolation of cDNAs encoding a family of proteins. *Oncogene* 10: 299-306.
5. Fox, G.M., et al. 1995. DNA cloning and tissue distribution of five human Eph-like receptor protein-tyrosine kinases. *Oncogene* 10: 897-905.
6. Valenzuela, D.M., et al. 1995. Identification of full length and truncated forms of Ehk-3, a novel member of the Eph receptor tyrosine kinase family. *Oncogene* 10: 1573-1580.
7. Bennett, B.D., et al. 1995. Molecular cloning of a ligand for the Eph-related receptor protein-tyrosine kinase Htk. *Proc. Natl. Acad. Sci. USA* 92: 1866-1870.

## CHROMOSOMAL LOCATION

Genetic locus: EPHA6 (human) mapping to 3q11.2.

## SOURCE

EphA6 (1426CT591.205.91.119) is a mouse monoclonal antibody raised against a recombinant protein corresponding to EphA6 of human origin.

## PRODUCT

Each vial contains 100 µg IgG<sub>1</sub> kappa light chain in 1.0 ml of PBS with < 0.1% sodium azide and 0.1% gelatin.

## STORAGE

Store at 4° C, **\*\*DO NOT FREEZE\*\***. Stable for one year from the date of shipment. Non-hazardous. No MSDS required.

## APPLICATIONS

EphA6 (1426CT591.205.91.119) is recommended for detection of EphA6 of human origin by Western Blotting (starting dilution 1:200, dilution range 1:100-1:1000) and immunoprecipitation [1-2 µg per 100-500 µg of total protein (1 ml of cell lysate)].

Suitable for use as control antibody for EphA6 siRNA (h): sc-106860, EphA6 shRNA Plasmid (h): sc-106860-SH and EphA6 shRNA (h) Lentiviral Particles: sc-106860-V.

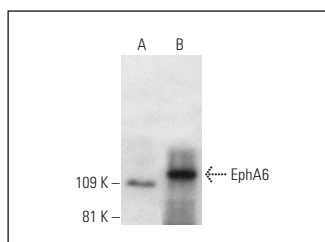
Molecular Weight of EPHA6: 116 kDa.

Positive Controls: human testis extract: sc-363781.

## RECOMMENDED SUPPORT REAGENTS

To ensure optimal results, the following support reagents are recommended:  
 1) Western Blotting: use m-IgGκ BP-HRP: sc-516102 or m-IgGκ BP-HRP (Cruz Marker): sc-516102-CM (dilution range: 1:1000-1:10000), Cruz Marker™ Molecular Weight Standards: sc-2035, UltraCruz® Blocking Reagent: sc-516214 and Western Blotting Luminol Reagent: sc-2048. 2) Immunoprecipitation: use Protein A/G PLUS-Agarose: sc-2003 (0.5 ml agarose/2.0 ml).

## DATA



EphA6 (1426CT591.205.91.119): sc-517327. Western blot analysis of EphA6 expression in 293T whole cell lysate (A) and human testis tissue extract (B).

## RESEARCH USE

For research use only, not for use in diagnostic procedures.

## PROTOCOLS

See our web site at [www.scbt.com](http://www.scbt.com) for detailed protocols and support products.