

# FAM120A (1501CT803.19.85.5): sc-517328

## BACKGROUND

FAM120A, also known as OSSA (oxidative stress-associated Src activator) or C9orf10, is a 1,118 amino acid tumor suppressor that localizes to the cytoplasm and cell membrane. FAM120A is ubiquitously expressed with high protein levels present in scirrhous-type gastric cancer tissues compared to normal gastric mucosa. Belonging to the constitutive coactivator of PPAR-gamma family, FAM120A activates src family kinases and is an essential protein involved in the oxidative stress-induced survival signaling pathway. FAM120A binds RNA, promotes secretion of IGF-II and exists as five alternatively spliced isoforms. The gene encoding FAM120A maps to human chromosome 9, which consists of about 145 million bases and 4% of the human genome and encodes nearly 900 genes.

## REFERENCES

1. Nagase, T., Seki, N., Ishikawa, K., Tanaka, A. and Nomura, N. 1996. Prediction of the coding sequences of unidentified human genes. V. The coding sequences of 40 new genes (KIAA0161-KIAA0200) deduced by analysis of cDNA clones from human cell line KG-1. *DNA Res.* 3: 17-24.
2. Holden, S. and Raymond, F.L. 2003. The human gene CXorf17 encodes a member of a novel family of putative transmembrane proteins: cDNA cloning and characterization of CXorf17 and its mouse ortholog orf34. *Gene* 318: 149-161.
3. Dephoure, N., Zhou, C., Villen, J., Beausoleil, S.A., Bakalarski, C.E., Elledge, S.J. and Gygi, S.P. 2008. A quantitative atlas of mitotic phosphorylation. *Proc. Natl. Acad. Sci. USA* 105: 10762-10767.
4. Tanaka, M., Sasaki, K., Kamata, R., Hoshino, Y., Yanagihara, K. and Sakai, R. 2009. A novel RNA-binding protein, Ossa/C9orf10, regulates activity of Src kinases to protect cells from oxidative stress-induced apoptosis. *Mol. Cell Biol.* 29: 402-413.
5. Mayya, V., Lundgren, D.H., Hwang, S.I., Rezaul, K., Wu, L., Eng, J.K., Rodionov, V. and Han, D.K. 2009. Quantitative phosphoproteomic analysis of T cell receptor signaling reveals system-wide modulation of protein-protein interactions. *Sci. Signal.* 2: ra46.
6. Burkard, T.R., Planyavsky, M., Kaupe, I., Breitwieser, F.P., Bürcstümmer, T., Bennett, K.L., Superti-Furga, G. and Colinge, J. 2011. Initial characterization of the human central proteome. *BMC Syst. Biol.* 5: 17.
7. Bian, Y., Song, C., Cheng, K., Dong, M., Wang, F., Huang, J., Sun, D., Wang, L., Ye, M. and Zou, H. 2014. An enzyme assisted RP-RPLC approach for in-depth analysis of human liver phosphoproteome. *J. Proteomics* 96: 253-262.

## CHROMOSOMAL LOCATION

Genetic locus: FAM120A (human) mapping to 9q22.31.

## SOURCE

FAM120A (1501CT803.19.85.5) is a mouse monoclonal antibody raised against a recombinant protein corresponding to FAM120A of human origin.

## RESEARCH USE

For research use only, not for use in diagnostic procedures.

## PRODUCT

Each vial contains 100 µg IgG<sub>1</sub> kappa light chain in 1.0 ml of PBS with < 0.1% sodium azide and 0.1% gelatin.

## APPLICATIONS

FAM120A (1501CT803.19.85.5) is recommended for detection of FAM120A of human origin by Western Blotting (starting dilution 1:200, dilution range 1:100-1:1000), immunoprecipitation [1-2 µg per 100-500 µg of total protein (1 ml of cell lysate)], immunofluorescence (starting dilution 1:50, dilution range 1:50-1:500) and immunohistochemistry (including paraffin-embedded sections) (starting dilution 1:50, dilution range 1:50-1:500).

Suitable for use as control antibody for FAM120A siRNA (h): sc-92686, FAM120A shRNA Plasmid (h): sc-92686-SH and FAM120A shRNA (h) Lentiviral Particles: sc-92686-V.

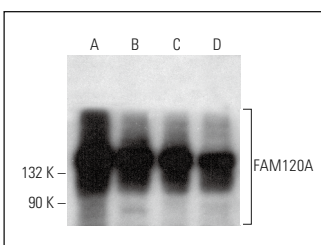
Molecular Weight of FAM120A: 122/69/117/72/125 kDa.

Positive Controls: MCF7 whole cell lysate: sc-2206, U-2 OS cell lysate: sc-2295 or HeLa whole cell lysate: sc-2200.

## RECOMMENDED SUPPORT REAGENTS

To ensure optimal results, the following support reagents are recommended: 1) Western Blotting: use m-IgGκ BP-HRP: sc-516102 or m-IgGκ BP-HRP (Cruz Marker): sc-516102-CM (dilution range: 1:1000-1:10000), Cruz Marker™ Molecular Weight Standards: sc-2035, UltraCruz® Blocking Reagent: sc-516214 and Western Blotting Luminol Reagent: sc-2048. 2) Immunoprecipitation: use Protein A/G PLUS-Agarose: sc-2003 (0.5 ml agarose/2.0 ml). 3) Immunofluorescence: use m-IgGκ BP-FITC: sc-516140 or m-IgGκ BP-PE: sc-516141 (dilution range: 1:50-1:200) with UltraCruz® Mounting Medium: sc-24941 or UltraCruz® Hard-set Mounting Medium: sc-359850. 4) Immunohistochemistry: use m-IgGκ BP-HRP: sc-516102 with DAB, 50X: sc-24982 and Immunohistomount: sc-45086, or Organo/Limonene Mount: sc-45087.

## DATA



FAM120A (1501CT803.19.85.5): sc-517328. Western blot analysis of FAM120A expression in MCF7 (A), U-2 OS (B), HeLa (C) and HEK293 (D) whole cell lysates.

## STORAGE

Store at 4° C, \*\*DO NOT FREEZE\*\*. Stable for one year from the date of shipment. Non-hazardous. No MSDS required.