

KCTD15 (AT4C3): sc-517410

BACKGROUND

KCTD15 is a 283 amino acid protein that contains one BTB (POZ) domain and exists as 2 alternatively spliced isoforms. The gene that encodes KCTD15 consists of approximately 18,918 bases and maps to human chromosome 19q13.11. Consisting of around 63 million bases with more than 1,400 genes, chromosome 19 makes up over 2% of the human genome. It is the genetic home for a number of immunoglobulin superfamily members including the killer cell and leukocyte Ig-like receptors, a number of ICAMs, the CEACAM and PSG families, and Fc receptors. Key genes for eye color and hair color also map to chromosome 19. Peutz-Jeghers syndrome, spinocerebellar ataxia type 6, the stroke disorder CADASIL, hypercholesterolemia and Insulin-dependent diabetes have been linked to chromosome 19. Translocations with chromosome 19 and chromosome 14 can be seen in some lymphoproliferative disorders and typically involve the proto-oncogene Bcl3.

REFERENCES

- Olsen, A., Teglund, S., Nelson, D., Gordon, L., Copeland, A., Georgescu, A., Carrano, A. and Hammarström, S. 1994. Gene organization of the pregnancy-specific glycoprotein region on human chromosome 19: assembly and analysis of a 700-kb cosmid contig spanning the region. *Genomics* 23: 659-668.
- Teglund, S., Olsen, A., Khan, W.N., Frängsmyr, L. and Hammarström, S. 1994. The pregnancy-specific glycoprotein (PSG) gene cluster on human chromosome 19: fine structure of the 11 PSG genes and identification of 6 new genes forming a third subgroup within the carcinoembryonic antigen (CEA) family. *Genomics* 23: 669-684.
- Wang, L., Lin, S.H., Wu, W.G., Kemp, B.L., Walsh, G.L., Hong, W.K. and Mao, L. 2000. C-CAM1, a candidate tumor suppressor gene, is abnormally expressed in primary lung cancers. *Clin. Cancer Res.* 6: 2988-2993.
- Trowsdale, J., Barten, R., Haude, A., Stewart, C.A., Beck, S. and Wilson, M.J. 2001. The genomic context of natural killer receptor extended gene families. *Immunol. Rev.* 181: 20-38.
- Le Meur, N., Martin, C., Saugier-Verber, P., Joly, G., Lemoine, F., Moirot, H., Rossi, A., Bachy, B., Cabot, A., Joly, P. and Frebourg, T. 2004. Complete germline deletion of the STK11 gene in a family with Peutz-Jeghers syndrome. *Eur. J. Hum. Genet.* 12: 415-418.
- Leeb, T. and Müller, M. 2004. Comparative human-mouse-rat sequence analysis of the ICAM gene cluster on HSA 19p13.2 and a 185-kb porcine region from SSC 2q. *Gene* 343: 239-244.
- Barrow, A.D. and Trowsdale, J. 2008. The extended human leukocyte receptor complex: diverse ways of modulating immune responses. *Immunol. Rev.* 224: 98-123.

CHROMOSOMAL LOCATION

Genetic locus: KCTD15 (human) mapping to 19q13.11.

SOURCE

KCTD15 (AT4C3) is a mouse monoclonal antibody raised against a recombinant protein corresponding to amino acids 1-234 of KCTD15 of human origin.

PRODUCT

Each vial contains 100 µg IgG₃ in 1.0 ml of PBS with < 0.1% sodium azide and 0.1% gelatin.

APPLICATIONS

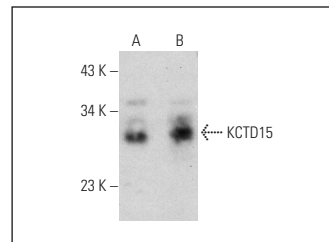
KCTD15 (AT4C3) is recommended for detection of KCTD15 of human origin by Western Blotting (starting dilution 1:200, dilution range 1:100-1:1000), immunoprecipitation [1-2 µg per 100-500 µg of total protein (1 ml of cell lysate)], immunofluorescence (starting dilution 1:50, dilution range 1:50-1:500), flow cytometry (1 µg per 1 x 10⁶ cells) and solid phase ELISA (starting dilution 1:30, dilution range 1:30-1:3000).

Suitable for use as control antibody for KCTD15 siRNA (h): sc-97204, KCTD15 shRNA Plasmid (h): sc-97204-SH and KCTD15 shRNA (h) Lentiviral Particles: sc-97204-V.

Molecular Weight of KCTD15 isoforms: 32/26 kDa.

Positive Controls: K-562 whole cell lysate: sc-2203 or SK-BR-3 cell lysate: sc-2218.

DATA



KCTD15 (AT4C3): sc-517410. Western blot analysis of KCTD15 expression in K-562 (A) and SK-BR-3 (B) whole cell lysates.

STORAGE

Store at 4° C, ****DO NOT FREEZE****. Stable for one year from the date of shipment. Non-hazardous. No MSDS required.

RESEARCH USE

For research use only, not for use in diagnostic procedures.

PROTOCOLS

See our web site at www.scbt.com for detailed protocols and support products.