

Fibulin-1 (C11): sc-517435

BACKGROUND

Fibulin-1 is a modular glycoprotein component of the elastic extracellular matrix fibers, basement membranes and blood. Fibulin-1 self associates as well as binds to calcium, fibronectin, laminin, nidogen and fibrinogen. These interactions, individually or in combination, may account for the observed association of Fibulin-1 with basement membranes, connective tissue elastic fibers and fibrin clots. Fibulin-1 expression is stimulated by estrogen in ovarian cancer cell lines and has been suggested as both an agent of metastasis in ovarian cancer cells and an indicator for predicting cancer risk or aggressiveness in ovarian carcinomas. Other studies point to the inhibition of cancer cell motility with increasing exposure to Fibulin-1. The exact function of Fibulin-1 in the cell is unknown.

REFERENCES

- Clinton, G.M., Rougeot, C., Derancourt, J., Roger, P., Defrenne, A., Godyna, S., Argraves, W.S. and Rochefort, H. 1996. Estrogens increase the expression of Fibulin-1, an extracellular matrix protein secreted by human ovarian cancer cells. *Proc. Natl. Acad. Sci. USA* 93: 316-320.
- Tran, H., VanDusen W.J., Argraves, W.S. 1997. The self-association and fibronectin-binding sites of Fibulin-1 map to calcium-binding epidermal growth factor-like domains. *J. Biol. Chem.* 272: 22600-22606.
- Barth, J.L., Argraves, K.M., Roark, E.F., Little, C.D. and Argraves, W.S. 1998. Identification of chicken and *C. elegans* Fibulin-1 homologs and characterization of the *C. elegans* Fibulin-1 gene. *Matrix Biol.* 17: 635-646.
- Roger, P., Pujol, P., Lucas, A., Baldet, P. and Rochefort, H. 1998. Increased immunostaining of Fibulin-1, an estrogen-regulated protein in the stroma of human ovarian epithelial tumors. *Am. J. Pathol.* 153: 1579-1588.
- Hayashido, Y., Lucas, A., Rougeot, C., Godyna, S., Argraves, W.S. and Rochefort, H. 1998. Estradiol and Fibulin-1 inhibit motility of human ovarian- and breast-cancer cells induced by fibronectin. *Int. J. Cancer* 75: 654-658.
- Rochefort, H., Platet, N., Hayashido, Y., Derocq, D., Lucas, A., Cunat, S. and Garcia, M. 1998. Estrogen receptor mediated inhibition of cancer cell invasion and motility: an overview. *Steroid Biochem. Mol. Biol.* 65: 163-168.
- Pan, T.C., Kostka, G., Zhang, R.Z., Timpl, R. and Chu, M.L. 1999. Complete exon-intron organization of the mouse Fibulin-1 gene and its comparison with the human Fibulin-1 gene. *FEBS Lett.* 444: 38-42.

CHROMOSOMAL LOCATION

Genetic locus: Fbln1 (mouse) mapping to 15 E2.

SOURCE

Fibulin-1 (C11) is a mouse monoclonal antibody raised against a recombinant protein corresponding to amino acids 399-578 of Fibulin-1 of mouse origin.

PRODUCT

Each vial contains 100 µg IgG_{2b} kappa light chain in 1.0 ml of PBS with < 0.1% sodium azide and 0.1% gelatin.

APPLICATIONS

Fibulin-1 (C11) is recommended for detection of Fibulin-1 of mouse and rat origin by Western Blotting (starting dilution 1:200, dilution range 1:100-1:1000), immunoprecipitation [1-2 µg per 100-500 µg of total protein (1 ml of cell lysate)], immunofluorescence (starting dilution 1:50, dilution range 1:50-1:500), immunohistochemistry (including paraffin-embedded sections) (starting dilution 1:50, dilution range 1:50-1:500) and solid phase ELISA (starting dilution 1:30, dilution range 1:30-1:3000).

Suitable for use as control antibody for Fibulin-1 siRNA (m): sc-35373, Fibulin-1 shRNA Plasmid (m): sc-35373-SH and Fibulin-1 shRNA (m) Lentiviral Particles: sc-35373-V.

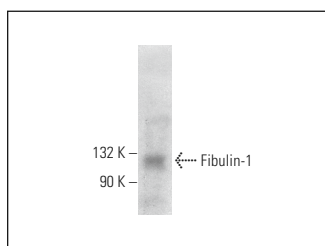
Molecular Weight of Fibulin-1: 100 kDa.

Positive Controls: CCD-1064Sk cell lysate: sc-2263.

RECOMMENDED SUPPORT REAGENTS

To ensure optimal results, the following support reagents are recommended: 1) Western Blotting: use m-IgGκ BP-HRP: sc-516102 or m-IgGκ BP-HRP (Cruz Marker): sc-516102-CM (dilution range: 1:1000-1:10000), Cruz Marker™ Molecular Weight Standards: sc-2035, UltraCruz® Blocking Reagent: sc-516214 and Western Blotting Luminol Reagent: sc-2048. 2) Immunoprecipitation: use Protein A/G PLUS-Agarose: sc-2003 (0.5 ml agarose/2.0 ml). 3) Immunofluorescence: use m-IgGκ BP-FITC: sc-516140 or m-IgGκ BP-PE: sc-516141 (dilution range: 1:50-1:200) with UltraCruz® Mounting Medium: sc-24941 or UltraCruz® Hard-set Mounting Medium: sc-359850. 4) Immunohistochemistry: use m-IgGκ BP-HRP: sc-516102 with DAB, 50X: sc-24982 and Immunohistomount: sc-45086, or Organo/Limonene Mount: sc-45087.

DATA



Fibulin-1 (C11): sc-517435. Western blot analysis of Fibulin-1 expression in CCD-1064Sk whole cell lysate.

STORAGE

Store at 4° C, **DO NOT FREEZE**. Stable for one year from the date of shipment. Non-hazardous. No MSDS required.

RESEARCH USE

For research use only, not for use in diagnostic procedures.

PROTOCOLS

See our web site at www.scbt.com for detailed protocols and support products.