

CA19-9 (C4): sc-517448

BACKGROUND

Blood-group antigens are generally defined as molecules formed by sequential addition of saccharides to the carbohydrate side chains of lipids and proteins detected on erythrocytes and certain epithelial cells. The A, B and H antigens are reported to undergo modulation during malignant cellular transformation. Blood group related antigens are usually mucin-type and are detected on erythrocytes, certain epithelial cells, and in secretions of certain individuals. Sixteen genetically and biosynthetically distinct but inter-related specificities belong to this group of antigens, including A, B, H, Lewis a, Lewis b, Lewis x, Lewis y, CA19-9, and precursor type 1 chain antigens. CA19-9 is associated with colon pancreatic, and endometrial cancer as well as intestinal metaplasia.

REFERENCES

1. King, M.J. and Holburn, A.M. 1979. Radioassays of blood group M, N and T (Thomsen-Friedenreich) antigens. *Immunology* 38: 129-136.
2. Watkins, W.M. 1980. Biochemistry and Genetics of the ABO, Lewis, and P blood group systems. *Adv. Hum. Genet.* 10: 1-136, 379-385.
3. Gupta, M.K., Arciaga, R., Bocci, L., Tubbs, R., Bukowski, R. and Deodhar, S.D. 1985. Measurement of a monoclonal-antibody-defined antigen (CA19-9) in the sera of patients with malignant and nonmalignant diseases. Comparison with carcinoembryonic antigen. *Cancer* 56: 277-283.
4. Otsuka, K., Kudo, T., Nakajima, T. and Ohkuma, S. 1991. Blood group N antigen precursor glycoproteins and N antigen precursor glycoproteins with Thomsen-Friedenreich (T) activity from human liver metastatic carcinomas. *Int. J. Biochem.* 23: 569-578.
5. Murata, K., Egami, H., Shibata, Y., Sakamoto, K., Misumi, A. and Ogawa, M. 1992. Expression of blood group-related antigens, ABH, Lewis a, Lewis b, Lewis x, Lewis y, CA19-9, and CSLEX1 in early cancer, intestinal metaplasia, and uninvolved mucosa of the stomach. *Am. J. Clin. Pathol.* 98: 67-75.
6. Boren, T., Falk, P., Roth, K.A., Larson, G. and Normark, S. 1993. Attachment of *Helicobacter pylori* to human gastric epithelium mediated by blood group antigens. *Science* 262: 1892-1895.
7. Takeshima, N., Shimizu, Y., Umezawa, S., Hirai, Y., Chen, J.T., Fujimoto, I., Yamauchi, K. and Hasumi, K. 1994. Combined assay of serum levels of CA125 and CA19-9 in endometrial carcinoma. *Gynecol. Oncol.* 54: 321-326.
8. Fisher, A., Theise, N.D., Min, A., Mor, E., Emre, S., Pearl, A., Schwartz, M.E., Miller, C.M. and Sheiner, P.A. 1995. CA19-9 does not predict cholangiocarcinoma in patients with primary sclerosing cholangitis undergoing liver transplantation. *Liver Transpl. Surg.* 1: 94-98.
9. Heinemann, V., Schermuly, M.M., Stieber, P., Schulz, L., Jungst, D., Wilkowski, R. and Schalhorn, A. 1999. CA19-9: a predictor of response in pancreatic cancer treated with gemcitabine and cisplatin. *Anticancer Res.* 19: 2433-2435.

SOURCE

CA19-9 (C4) is a mouse monoclonal antibody raised against a recombinant protein corresponding to amino acids 35-361 of CA19-9 of human origin.

PRODUCT

Each vial contains 100 µg IgG_{2b} kappa light chain in 1.0 ml of PBS with < 0.1% sodium azide, 0.1% gelatin and 1% glycerol.

APPLICATIONS

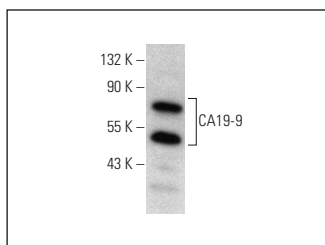
CA19-9 (C4) is recommended for detection of CA19-9 of human origin by Western Blotting (starting dilution 1:200, dilution range 1:100-1:1000), immunoprecipitation [1-2 µg per 100-500 µg of total protein (1 ml of cell lysate)], immunofluorescence (starting dilution 1:50, dilution range 1:50-1:500), immunohistochemistry (including paraffin-embedded sections) (starting dilution 1:50, dilution range 1:50-1:500) and solid phase ELISA (starting dilution 1:30, dilution range 1:30-1:3000).

Positive Controls: COLO 205 whole cell lysate: sc-364177.

RECOMMENDED SUPPORT REAGENTS

To ensure optimal results, the following support reagents are recommended: 1) Western Blotting: use m-IgGκ BP-HRP: sc-516102 or m-IgGκ BP-HRP (Cruz Marker): sc-516102-CM (dilution range: 1:1000-1:10000), Cruz Marker™ Molecular Weight Standards: sc-2035, TBS Blotto A Blocking Reagent: sc-2333 and Western Blotting Luminol Reagent: sc-2048. 2) Immunoprecipitation: use Protein A/G PLUS-Agarose: sc-2003 (0.5 ml agarose/2.0 ml). 3) Immunofluorescence: use m-IgGκ BP-FITC: sc-516140 or m-IgGκ BP-PE: sc-516141 (dilution range: 1:50-1:200) with UltraCruz® Mounting Medium: sc-24941 or UltraCruz® Hard-set Mounting Medium: sc-359850.

DATA



CA19-9 (C4): sc-517448. Western blot analysis of CA19-9 expression in COLO 205 whole cell lysate.

STORAGE

Store at 4° C, **DO NOT FREEZE**. Stable for one year from the date of shipment. Non-hazardous. No MSDS required.

RESEARCH USE

For research use only, not for use in diagnostic procedures.

PROTOCOLS

See our web site at www.scbt.com for detailed protocols and support products.