

# CD45RC (OX22): sc-53049

## BACKGROUND

CD45R, also designated CD45 and PTPRC, has been identified as a transmembrane glycoprotein, broadly expressed among hematopoietic cells. Multiple isoforms of CD45R are distributed throughout the immune system according to cell type. These isoforms arise because of alternative splicing of exons 4, 5, and 6. The corresponding protein domains are characterized by the binding of monoclonal antibodies specific for CD45RA (exon 4), CD45RB (exon 5), CD45RC (exon 6) and CD45RO (exons 4 to 6 spliced out). The variation in these isoforms is localized to the extracellular domain of CD45R, while the intracellular domain is conserved. CD45R functions as a phosphotyrosine phosphatase, a vital component for efficient tyrosine phosphorylation induction by the TCR/CD3 complex. The tyrosine phosphatase activity of CD45R is contained within the conserved intracellular domain. Src and Syk family protein tyrosine kinases are utilized by the TCR/CD3 complex to initiate signaling cascades. Several members of these two families, including Lck, Fyn and ZAP-70, have been implicated as physiological substrates of CD45R.

## REFERENCES

1. Trowbridge, I.S. 1978. Interspecies spleen-myeloma hybrid producing monoclonal antibodies against mouse lymphocyte surface glycoprotein, T200. *J. Exp. Med.* 148: 313-323.
2. West, K.P., et al. 1986. The demonstration of B cell, T cell and myeloid antigens in paraffin sections. *J. Pathol.* 150: 89-101.
3. Streuli, M., et al. 1987. Differential usage of three exons generates at least five different mRNAs encoding human leukocyte common antigens. *J. Exp. Med.* 166: 1548-1566.
4. Hall, P.A., et al. 1987. New marker of B lymphocytes, MB2: comparison with other lymphocyte subset markers active in conventionally processed tissue sections. *J. Clin. Pathol.* 40: 151-156.

## CHROMOSOMAL LOCATION

Genetic locus: *Ptprc* (mouse) mapping to 1 E4.

## SOURCE

CD45RC (OX22) is a mouse monoclonal antibody raised against stimulated lymphocytes of rat origin.

## PRODUCT

Each vial contains 200 µg IgG<sub>1</sub> kappa light chain in 1.0 ml of PBS with < 0.1% sodium azide and 0.1% gelatin.

CD45RC (OX22) is available conjugated to agarose (sc-53049 AC), 500 µg/0.25 ml agarose in 1 ml, for IP; to HRP (sc-53049 HRP), 200 µg/ml, for WB, IHC(P) and ELISA; to either phycoerythrin (sc-53049 PE), fluorescein (sc-53049 FITC), Alexa Fluor® 488 (sc-53049 AF488), Alexa Fluor® 546 (sc-53049 AF546), Alexa Fluor® 594 (sc-53049 AF594) or Alexa Fluor® 647 (sc-53049 AF647), 200 µg/ml, for WB (RGB), IF, IHC(P) and FCM; and to either Alexa Fluor® 680 (sc-53049 AF680) or Alexa Fluor® 790 (sc-53049 AF790), 200 µg/ml, for Near-Infrared (NIR) WB, IF and FCM.

Alexa Fluor® is a trademark of Molecular Probes, Inc., Oregon, USA

## APPLICATIONS

CD45RC (OX22) is recommended for detection of CD45RC of mouse, rat and human origin by Western Blotting (starting dilution 1:200, dilution range 1:100-1:1000), immunoprecipitation [1-2 µg per 100-500 µg of total protein (1 ml of cell lysate)], immunofluorescence (starting dilution 1:50, dilution range 1:50-1:500), immunohistochemistry (including paraffin-embedded sections) (starting dilution 1:50, dilution range 1:50-1:500) and flow cytometry (1 µg per 1 x 10<sup>6</sup> cells).

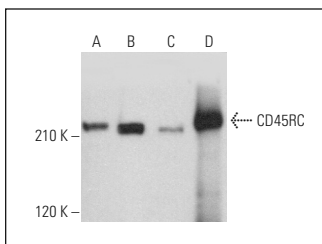
Molecular Weight of CD45RC: 180-220 kDa.

Positive Controls: C6 whole cell lysate: sc-364373, rat thymus extract: sc-2401 or Daudi cell lysate: sc-2415.

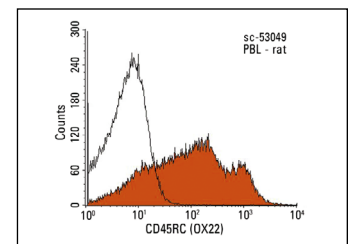
## RECOMMENDED SUPPORT REAGENTS

To ensure optimal results, the following support reagents are recommended: 1) Western Blotting: use m-IgGκ BP-HRP: sc-516102 or m-IgGκ BP-HRP (Cruz Marker): sc-516102-CM (dilution range: 1:1000-1:10000), Cruz Marker™ Molecular Weight Standards: sc-2035, UltraCruz® Blocking Reagent: sc-516214 and Western Blotting Luminol Reagent: sc-2048. 2) Immunoprecipitation: use Protein A/G PLUS-Agarose: sc-2003 (0.5 ml agarose/2.0 ml). 3) Immunofluorescence: use m-IgGκ BP-FITC: sc-516140 or m-IgGκ BP-PE: sc-516141 (dilution range: 1:50-1:200) with UltraCruz® Mounting Medium: sc-24941 or UltraCruz® Hard-set Mounting Medium: sc-359850. 4) Immunohistochemistry: use m-IgGκ BP-HRP: sc-516102 with DAB, 50X: sc-24982 and Immunohistomount: sc-45086, or Organo/Limonene Mount: sc-45087.

## DATA



CD45RC (OX22): sc-53049. Western blot analysis of CD45RC expression in C6 (A), Daudi (B) and TK-1 (C) whole cell lysates and rat thymus tissue extract (D).



CD45RC (OX22): sc-53049. Indirect FCM analysis of rat peripheral blood leukocytes stained with CD45RC (OX22), followed by PE-conjugated goat anti-mouse IgG: sc-3738. Black line histogram represents the isotype control, normal mouse IgG<sub>1</sub>: sc-3877.

## STORAGE

Store at 4° C, \*\*DO NOT FREEZE\*\*. Stable for one year from the date of shipment. Non-hazardous. No MSDS required.

## RESEARCH USE

For research use only, not for use in diagnostic procedures.

## PROTOCOLS

See our web site at [www.scbt.com](http://www.scbt.com) for detailed protocols and support products.