

AF-10 (HAF10 10D3/8): sc-53155

BACKGROUND

The nuclear protein AF-10 is one of several conserved transcription factors involved in the translocation of acute myeloid leukemia. The open reading frame of the human homolog, AF-10, contains 1027 amino acids which are 90% identical to those of the mouse homolog, AF-10, which contains 1061 amino acids. The protein is highly similar to AF-17 and is primarily expressed in testis.

REFERENCES

- Chaplin, T., Ayton, P., Bernard, O.A., Saha, V., Della Valle, V., Hillion, J., Gregorini, A., Lillington, D., Berger, R. and Young, B. 1995. A novel class of zinc finger/leucine zipper genes identified from the molecular cloning of the t(10;11) translocation in acute leukemia. *Blood* 85: 1435-1441.
- Silliman, C.C., McGavran, L., Wei, Q., Miller, L.A., Li, S. and Hunger, S.P. 1998. Alternative splicing in wildtype AF10 and CALM cDNAs and in AF10-CALM and CALM-AF10 fusion cDNAs produced by the t(10;11) (p13-14;q14-q21) suggests a potential role for truncated AF-10 polypeptides. *Leukemia* 12: 1404-1410.
- Roll, P., Zattara-Cannoni, H., Bustos-Bernard, M.C., Curtillet, C., Michel, G. and Vagner-Capodano, A.M. 2002. Molecular and fluorescence *in situ* hybridization analysis of a 10;11 rearrangement in a case of infant acute monocytic leukemia. *Cancer Genet. Cytogenet.* 135: 187-191.
- Nakamura, T., Mori, T., Tada, S., Krajewski, W., Rozovskaia, T., Wassell, R., Dubois, G., Mazo, A., Croce, C.M. and Canaani, E. 2002. ALL-1 is a histone methyltransferase that assembles a supercomplex of proteins involved in transcriptional regulation. *Mol. Cell* 10: 1119-1128.
- Strausberg, R.L., Feingold, E.A., Grouse, L.H., Derge, J.G., Klausner, R.D., Collins, F.S., Wagner, L., Shenmen, C.M., Schuler, G.D., Altschul, S.F., Zeeberg, B., Buetow, K.H., Schaefer, C.F., Hopkins, R.F., et al. 2002. Generation and initial analysis of more than 15,000 full-length human and mouse cDNA sequences. *Proc. Natl. Acad. Sci. USA* 99: 16899-16903.
- Perrin, L., Bloyer, S., Ferraz, C., Agrawal, N., Sinha, P. and Dura, J.M. 2003. The leucine zipper motif of the *Drosophila* AF-10 homologue can inhibit PRE-mediated repression: implications for leukemogenic activity of human MLL-AF10 fusions. *Mol. Cell Biol.* 23: 119-130.

CHROMOSOMAL LOCATION

Genetic locus: MLLT10 (human) mapping to 10p12; Mllt10 (mouse) mapping to 2.

SOURCE

AF-10 (HAF10 10D3/8) is a mouse monoclonal antibody raised against amino acids 1055-1069 of AF10 of human origin.

PRODUCT

Each vial contains 200 µg IgG_{2a} kappa light chain in 1.0 ml of PBS with < 0.1% sodium azide and 0.1% gelatin.

APPLICATIONS

AF-10 (HAF10 10D3/8) is recommended for detection of AF-10 of mouse, rat and human origin by Western Blotting (starting dilution 1:200, dilution range 1:100-1:1000) and immunoprecipitation [1-2 µg per 100-500 µg of total protein (1 ml of cell lysate)].

Suitable for use as control antibody for AF-10 siRNA (h): sc-43605, AF-10 siRNA (m): sc-140892, AF-10 shRNA Plasmid (h): sc-43605-SH, AF-10 shRNA Plasmid (m): sc-140892-SH, AF-10 shRNA (h) Lentiviral Particles: sc-43605-V and AF-10 shRNA (m) Lentiviral Particles: sc-140892-V.

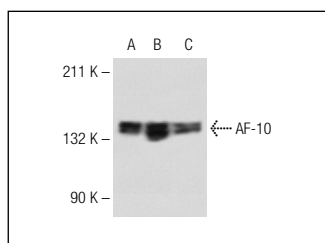
Molecular Weight of AF-10: 140 kDa.

Positive Controls: NTERA-2 cl.D1 whole cell lysate: sc-364181, M1 whole cell lysate: sc-364782 or K-562 whole cell lysate: sc-2203.

RECOMMENDED SUPPORT REAGENTS

To ensure optimal results, the following support reagents are recommended: 1) Western Blotting: use m-IgGκ BP-HRP: sc-516102 or m-IgGκ BP-HRP (Cruz Marker): sc-516102-CM (dilution range: 1:1000-1:10000), Cruz Marker™ Molecular Weight Standards: sc-2035, TBS Blotto A Blocking Reagent: sc-2333 and Western Blotting Luminol Reagent: sc-2048. 2) Immunoprecipitation: use Protein A/G PLUS-Agarose: sc-2003 (0.5 ml agarose/2.0 ml).

DATA



AF-10 (HAF10 10D3/8): sc-53155. Western blot analysis of AF-10 expression in NTERA-2 cl.D1 (A), M1 (B) and K-562 (C) whole cell lysates.

STORAGE

Store at 4° C, **DO NOT FREEZE**. Stable for one year from the date of shipment. Non-hazardous. No MSDS required.

RESEARCH USE

For research use only, not for use in diagnostic procedures.

PROTOCOLS

See our web site at www.scbt.com for detailed protocols and support products.