

cyclin A (E43.2): sc-53229

BACKGROUND

The critical role that the family of regulatory proteins known as cyclins play in eukaryotic cell cycle regulation is well established. The best-characterized cyclin complex is the mitotic cyclin B/Cdc2 p34 kinase, the active component of maturing promoting factor. Cyclin A accumulates prior to cyclin B in the cell cycle, appears to be involved in control of S phase and has been shown to associate with cyclin-dependent kinase-2 (Cdk2). In addition, cyclin A has been implicated in cell transformation and is found in complexes with E1A, transcription factors DRTF1 and E2F and retinoblastoma protein, p110. A second form of cyclin A, named cyclin A1 because of its high sequence homology to *Xenopus* cyclin A1, is most highly expressed in germ cells. It has been proposed that cyclin A1 can associate with Cdk2, p39 and Cdc2 p34.

REFERENCES

1. Draetta, G., et al. 1989. Cdc2 protein kinase is complexed with both cyclin A and B: evidence for proteolytic inactivation of MPF. *Cell* 56: 829-838.
2. Giordano, A., et al. 1989. A 60 kd Cdc2-associated polypeptide complexes with the E1A proteins in adenovirus-infected cells. *Cell* 58: 981-990.
3. Gautier, J., et al. 1990. Cyclin is a component of maturation-promoting factor from *Xenopus*. *Cell* 60: 487-494.
4. Wang, J., et al. 1990. Hepatitis B virus integration in a cyclin A gene in a hepatocellular carcinoma. *Nature* 343: 555-557.

CHROMOSOMAL LOCATION

Genetic locus: CCNA2 (human) mapping to 4q27; Ccna2 (mouse) mapping to 3 B.

SOURCE

cyclin A (E43.2) is a mouse monoclonal antibody raised against cyclin A of human origin.

PRODUCT

Each vial contains 200 µg IgG_{2a} kappa light chain in 1.0 ml of PBS with < 0.1% sodium azide and 0.1% gelatin.

APPLICATIONS

Cyclin A (E43.2) is recommended for detection of cyclin A of mouse, rat and human origin by Western Blotting (starting dilution 1:200, dilution range 1:100-1:1000), immunoprecipitation [1-2 µg per 100-500 µg of total protein (1 ml of cell lysate)] and immunofluorescence (starting dilution 1:50, dilution range 1:50-1:500).

Suitable for use as control antibody for cyclin A siRNA (h): sc-29282, cyclin A siRNA (m): sc-29283, cyclin A shRNA Plasmid (h): sc-29282-SH, cyclin A shRNA Plasmid (m): sc-29283-SH, cyclin A shRNA (h) Lentiviral Particles: sc-29282-V and cyclin A shRNA (m) Lentiviral Particles: sc-29283-V.

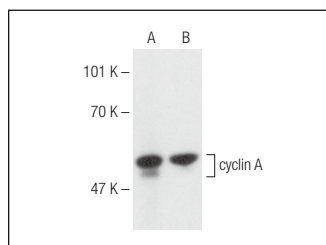
Molecular Weight of cyclin A: 54 kDa.

Positive Controls: K-562 whole cell lysate: sc-2203, HuT 78 whole cell lysate: sc-2208 or F9 cell lysate: sc-2245.

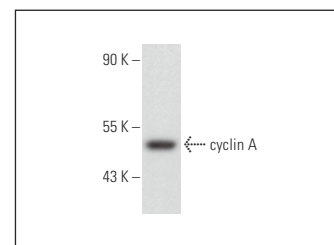
RECOMMENDED SUPPORT REAGENTS

To ensure optimal results, the following support reagents are recommended: 1) Western Blotting: use m-IgGκ BP-HRP: sc-516102 or m-IgGκ BP-HRP (Cruz Marker): sc-516102-CM (dilution range: 1:1000-1:10000), Cruz Marker™ Molecular Weight Standards: sc-2035, UltraCruz® Blocking Reagent: sc-516214 and Western Blotting Luminol Reagent: sc-2048. 2) Immunoprecipitation: use Protein A/G PLUS-Agarose: sc-2003 (0.5 ml agarose/2.0 ml). 3) Immunofluorescence: use m-IgGκ BP-FITC: sc-516140 or m-IgGκ BP-PE: sc-516141 (dilution range: 1:50-1:200) with UltraCruz® Mounting Medium: sc-24941 or UltraCruz® Hard-set Mounting Medium: sc-359850.

DATA



cyclin A (E43.2): sc-53229. Western blot analysis of cyclin A expression in K-562 (A) and HuT 78 (B) whole cell lysates.



cyclin A (E43.2): sc-53229. Western blot analysis of cyclin A expression in F9 whole cell lysate.

SELECT PRODUCT CITATIONS

1. Xu, Z.W., et al. 2010. Targeting the Na⁺/K⁺-ATPase α1 subunit of hepatoma Hep G2 cell line to induce apoptosis and cell cycle arresting. *Biol. Pharm. Bull.* 33: 743-751.
2. Flinck, M., et al. 2018. The acid-base transport proteins NHE1 and NBCn1 regulate cell cycle progression in human breast cancer cells. *Cell Cycle* 17: 1056-1067.
3. Nourredine, S., et al. 2020. NF45 and NF90 regulate mitotic gene expression by competing with Staufen-mediated mRNA decay. *Cell Rep.* 31: 107660.

STORAGE

Store at 4° C, **DO NOT FREEZE**. Stable for one year from the date of shipment. Non-hazardous. No MSDS required.

RESEARCH USE

For research use only, not for use in diagnostic procedures.

PROTOCOLS

See our web site at www.scbt.com for detailed protocols and support products.



See **cyclin A (B-8): sc-271682** for cyclin A antibody conjugates, including AC, HRP, FITC, PE, and Alexa Fluor® 488, 546, 594, 647, 680 and 790.