



# Fibrinogen $\alpha$ (UC45): sc-53284

## BACKGROUND

The plasma glycoprotein Fibrinogen is synthesized in the liver and comprises three structurally different subunits:  $\alpha$ ,  $\beta$  and  $\gamma$ . Fibrinogen is important in platelet aggregation, the final step of the coagulation cascade (i.e. the formation of Fibrin) and determination of plasma viscosity and erythrocyte aggregation. It is both constitutively expressed and inducible during an acute phase reaction. Hemostasis following tissue injury deploys essential plasma procoagulants (Prothrombin and Factors X, IX, V and VIII), which are involved in a blood coagulation cascade leading to the formation of insoluble Fibrin clots and the promotion of platelet aggregation. Following vascular injury, Fibrinogen is cleaved by Thrombin to form Fibrin, which is the most abundant component of blood clots. The cleavage products of Fibrinogen regulate cell adhesion and spreading, display vasoconstrictor and chemotactic activities and are mitogens for several cell types.

## REFERENCES

- Hogg, N., et al. 1981. Monoclonal antibody with specificity for monocytes and neurons. *Cell* 24: 875-884.
- Hogg, N., et al. 1983. Human monocytes are associated with the formation of fibrin. *J. Exp. Med.* 157: 473-485.
- Furlan, M., et al. 1983. Inhibition of fibrin polymerization by and Gly-His-Arg. *Biochim. Biophys. Acta* 742: 25-32.
- Linch, D.C., et al. 1984. Monoclonal antibodies differentiating between monocytic and nonmonocytic variants of AML. *Blood* 63: 566-573.
- van Gelder, J.M., et al. 1993. Effects of Poloxamer 188 on fibrin network structure, whole blood clot permeability and fibrinolysis. *Thromb. Res.* 71: 361-376.
- van Gelder, J.M., et al. 1996. Erythrocyte aggregation and eryt of erythrocyte enriched fibrin network. *Thromb. Res.* 82: 33-42.
- Kaijzel, E.L., et al. 2006. Molecular weight fibrinogen variants determine angiogenesis rate in a fibrin matrix *in vitro* and *in vivo*. *J. Thromb. Haemost.* 4: 1975-1981.
- Rock, G., et al. 2006. The contribution of platelets in the production of cryoprecipitates for use in a fibrin glue. *Vox Sang.* 91: 252-255.
- Shimada, Y., et al. 2006. Dural substitute with polyglycolic acid mesh and fibrin glue for dural repair: technical note and preliminary results. *J. Orthop. Sci.* 11: 454-458.

## CHROMOSOMAL LOCATION

Genetic locus: FGA (human) mapping to 4q31.3.

## SOURCE

Fibrinogen  $\alpha$  (UC45) is a mouse monoclonal antibody raised against acute monoblastic leukemia cells of human origin.

## PRODUCT

Each vial contains 200  $\mu$ g IgM kappa light chain in 1.0 ml of PBS with < 0.1% sodium azide and 0.1% gelatin.

## APPLICATIONS

Fibrinogen  $\alpha$  (UC45) is recommended for detection of Fibrinogen  $\alpha$  of human origin by immunofluorescence (starting dilution 1:50, dilution range 1:50-1:500).

Suitable for use as control antibody for Fibrinogen  $\alpha$  siRNA (h): sc-40409, Fibrinogen  $\alpha$  shRNA Plasmid (h): sc-40409-SH and Fibrinogen  $\alpha$  shRNA (h) Lentiviral Particles: sc-40409-V.

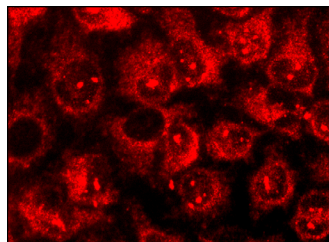
Molecular Weight of Fibrinogen  $\alpha$ : 30 kDa.

Positive Controls: human platelet extract: sc-363773.

## RECOMMENDED SUPPORT REAGENTS

To ensure optimal results, the following support reagents are recommended:  
1) Immunofluorescence: use m-IgG $\kappa$  BP-FITC: sc-516140 or m-IgG $\kappa$  BP-PE: sc-516141 (dilution range: 1:50-1:200) with UltraCruz<sup>®</sup> Mounting Medium: sc-24941 or UltraCruz<sup>®</sup> Hard-set Mounting Medium: sc-359850.

## DATA



Fibrinogen  $\alpha$  (UC45): sc-53284. Immunofluorescence staining of methanol-fixed HeLa cells showing cytoplasmic localization.

## STORAGE

Store at 4° C, **\*\*DO NOT FREEZE\*\***. Stable for one year from the date of shipment. Non-hazardous. No MSDS required.

## RESEARCH USE

For research use only, not for use in diagnostic procedures.

## PROTOCOLS

See our web site at [www.scbt.com](http://www.scbt.com) for detailed protocols and support products.