

HLA-DR (2.06): sc-53517

BACKGROUND

Major histocompatibility complex (MHC) class II molecules destined for presentation to CD4⁺ helper T cells is determined by two key events. These events include the dissociation of class II-associated invariant chain peptides (CLIP) from an antigen binding groove in MHC II- α/β dimers through the activity of MHC molecules HLA-DM and -DO, and subsequent peptide antigen binding. Accumulating in endosomal/lysosomal compartments and on the surface of B cells, HLA-DM, -DO molecules regulate the dissociation of CLIP and the subsequent binding of exogenous peptides to HLA class II molecules (HLA-DR, -DQ and -DP) by sustaining a conformation that favors peptide exchange. RFLP analysis of HLA-DM genes from rheumatoid arthritis (RA) patients suggests that certain polymorphisms are genetic factors for RA susceptibility. HLA-B belongs to the HLA class I heavy chain paralogs. Class I molecules play a central role in the immune system by presenting peptides derived from the endoplasmic reticulum lumen. HLA-B and -C can form heterodimers consisting of a membrane-anchored heavy chain and a light chain (β -2-Microglobulin). Polymorphisms yield hundreds of HLA-B and -C alleles.

REFERENCES

- Horejsi, V., et al. 1986. Characterization of seven new monoclonal antibodies against human DR, DR + DP and DQ1 + DQ3 antigens. *Tissue Antigens* 28: 288-297.
- Horejsi, V., et al. 1986. Monoclonal antibodies against human leucocyte antigens. I. Antibodies against β -2-microglobulin, immunoglobulin κ light chains, HLA-DR-like antigens, T8 antigen, T1 antigen, a monocyte antigen, and a pan-leucocyte antigen. *Folia Biol.* 32: 12-25.
- Kropshofer, H., et al. 1998. A role for HLA-DO as a co-chaperone of HLA-DM in peptide loading of MHC class II molecules. *EMBO J.* 17: 2971-2981.
- Siegmund, T., et al. 1999. HLA-DMA and HLA-DMB alleles in German patients with type 1 diabetes mellitus. *Tissue Antigens* 54: 291-294.
- Arndt, S.O., et al. 2000. Functional HLA-DM on the surface of B cells and immature dendritic cells. *EMBO J.* 19: 1241-1251.
- Brunet, A., et al. 2000. Functional characterization of a lysosomal sorting motif in the cytoplasmic tail of HLA-DO β . *J. Biol. Chem.* 275: 37062-37071.
- Doebele, C.R., et al. 2000. Determination of the HLA-DM interaction site on HLA-DR molecules. *Immunity* 13: 517-527.
- Louis-Pence, P., et al. 2000. The down-regulation of HLA-DM gene expression in rheumatoid arthritis is not related to their promoter polymorphism. *J. Immunol.* 165: 4861-4869.
- Toussiro, E., et al. 2000. The association of HLA-DM genes with rheumatoid arthritis in Eastern France. *Hum. Immunol.* 61: 303-308.

SOURCE

HLA-DR (2.06) is a mouse monoclonal antibody raised against Epstein-Barr virus-transformed B-lymphocytes of human origin.

PRODUCT

Each vial contains 200 μ g IgG₁ kappa light chain in 1.0 ml of PBS with < 0.1% sodium azide and 0.1% gelatin.

APPLICATIONS

HLA-DR (2.06) is recommended for detection of HLA-DR cell surface antigen of mouse, rat and human origin by Western Blotting (starting dilution 1:200, dilution range 1:100-1:1000) and immunoprecipitation [1-2 μ g per 100-500 μ g of total protein (1 ml of cell lysate)].

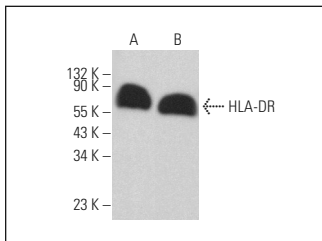
Molecular Weight of mature HLA-DR: 30 kDa.

Positive Controls: IB4 whole cell lysate: sc-364780, NAMALWA cell lysate: sc-2234 or HLA-DR β 1 (h3): 293T Lysate: sc-115102.

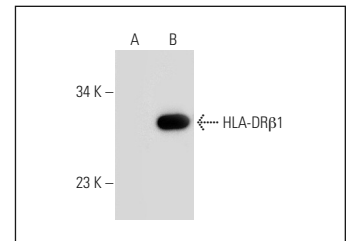
RECOMMENDED SUPPORT REAGENTS

To ensure optimal results, the following support reagents are recommended: 1) Western Blotting: use m-IgG κ BP-HRP: sc-516102 or m-IgG κ BP-HRP (Cruz Marker): sc-516102-CM (dilution range: 1:1000-1:10000), Cruz Marker™ Molecular Weight Standards: sc-2035, TBS Blotto A Blocking Reagent: sc-2333 and Western Blotting Luminol Reagent: sc-2048. 2) Immunoprecipitation: use Protein A/G PLUS-Agarose: sc-2003 (0.5 ml agarose/2.0 ml).

DATA



HLA-DR (2.06): sc-53517. Western blot analysis of HLA-DR expression in NAMALWA (A) and IB4 (B) whole cell lysates.



HLA-DR (2.06): sc-53517. Western blot analysis of HLA-DR β 1 expression in non-transfected: sc-117752 (A) and human HLA-DR β 1 transfected: sc-115102 (B) 293T whole cell lysates.

SELECT PRODUCT CITATIONS

- Bu, N., et al. 2011. Exosome-loaded dendritic cells elicit tumor-specific CD8⁺ cytotoxic T cells in patients with glioma. *J. Neurooncol.* 104: 659-667.

STORAGE


Store at 4° C, **DO NOT FREEZE**. Stable for one year from the date of shipment. Non-hazardous. No MSDS required.

RESEARCH USE

For research use only, not for use in diagnostic procedures.

PROTOCOLS

See our web site at www.scbt.com for detailed protocols and support products.



See **HLA-DR (520B): sc-69673** for HLA-DR antibody conjugates, including AC, HRP, FITC, PE, Alexa Fluor® 488 and Alexa Fluor® 647.