

CD57 (HCD57): sc-53669

BACKGROUND

Over 100 cell surface markers have been identified through the use of monoclonal antibodies. Many of these markers have proven useful in identifying a specific subpopulation of cells within a mixed colony. Accordingly, these molecules have been assigned a "cluster of differentiation" (CD) designation. T lymphocytes displaying the natural killer (NK) cell marker CD57 (also designated Leu7) on their cell surface are distinguishable from other T cell subsets by their granular lymphocyte morphology and their clonal expansion in patients with AIDS and in recipients of bone marrow transplantation. CD57-positive cells have also been shown to localize to sites of certain tumors and large numbers of these cells are detected in the synovial fluid from patients suffering from rheumatoid arthritis.

REFERENCES

- Holter, W., Stockinger, H., Majdic, O. and Knapp, W. 1991. Phenotypical and functional characterization of leukocytes-the CD-system. *Wien. Klin. Wochenschr.* 103: 247-262.
- Dupuy d'Angeac, A., Monier, S., Jorgensen, C., Gao, Q., Travaglio-Encinoza, A., Bologna, C., Combe, B., Sany, J. and Reme, T. 1993. Increased percentage of CD3⁺, CD57⁺ lymphocytes in patients with rheumatoid arthritis. *Arthritis Rheum.* 36: 608-612.
- Kamel, O.W., Gelb, A.B., Shibuya, R.B. and Warnke, R.A. 1993. Leu 7 (CD57) reactivity distinguishes nodular lymphocyte predominance Hodgkin's disease from nodular sclerosing Hodgkin's disease, T cell-rich B cell lymphoma and follicular lymphoma. *Am. J. Pathol.* 142: 541-546.
- Yamashita, N., Nguyen, L., Fahey, J.L. and Clement, L.T. 1993. Phenotypic properties and cytotoxic functions of human CD8⁺ cells expressing the CD57 antigen. *Nat. Immunol.* 12: 79-91.
- Fukuda, H., Nakamura, H., Tominaga, N., Teshima, H., Hiraoka, A., Shibata, H. and Masaoka, T. 1994. Marked increase of CD8⁺S6F1⁺ and CD8⁺CD57⁺ cells in patients with graft-versus-host disease after allogeneic bone marrow transplantation. *Bone Marrow Transplant.* 13: 181-185.
- Kim, Y.B., Zhang, J., Davis, W.C. and Lunney, J.K. 1994. CD11/CD18 panel report for swine CD workshop. *Vet. Immunol. Immunopathol.* 43: 289-291.
- Okada, T., Liai, T., Kawachi, Y., Moroda, T., Takii, Y., Hatakeyama, K. and Abo, T. 1995. Origin of CD57⁺ T cells which increase at tumour sites in patients with colorectal cancer. *Clin. Exp. Immunol.* 102: 159-166.
- Kern, F., Ode-Hakim, S., Vogt, K., Hofflich, C., Reinke, P. and Volk, H.D. 1996. The enigma of CD57⁺CD28⁻ T cell expansion-nergy or activation? *Clin. Exp. Immunol.* 104: 180-184.

CHROMOSOMAL LOCATION

Genetic locus: B3GAT1 (human) mapping to 11q25.

SOURCE

CD57 (HCD57) is a mouse monoclonal antibody raised against CD57 of human origin.

PRODUCT

Each vial contains 100 µg IgM in 1.0 ml of PBS with < 0.1% sodium azide and 0.1% gelatin.

APPLICATIONS

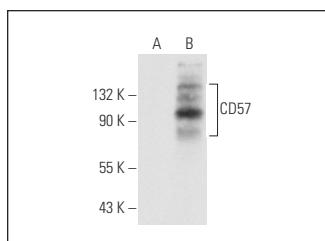
CD57 (HCD57) is recommended for detection of CD57 of human origin by Western Blotting (starting dilution 1:200, dilution range 1:100-1:1000), immunoprecipitation [1-2 µg per 100-500 µg of total protein (1 ml of cell lysate)] and flow cytometry (1 µg per 1 x 10⁶ cells).

Suitable for use as control antibody for CD57 siRNA (h): sc-42798, CD57 shRNA Plasmid (h): sc-42798-SH and CD57 shRNA (h) Lentiviral Particles: sc-42798-V.

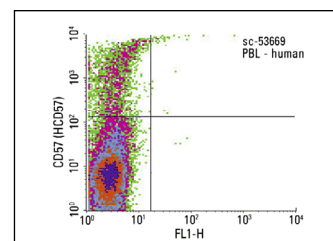
Molecular Weight of CD57: 110 kDa.

Positive Controls: CD57 (h3): 293T Lysate: sc-175168 or CCRF-CEM cell lysate: sc-2225.

DATA



CD57 (HCD57): sc-53669. Western blot analysis of CD57 expression in non-transfected: sc-117752 (A) and human CD57 transfected: sc-175168 (B) 293T whole cell lysates.



CD57 (HCD57): sc-53669. Indirect FCM analysis of human peripheral blood leukocytes stained with CD57 (HCD57), followed by PE-conjugated goat anti-mouse IgM: sc-3768. Quadrant markers were set based on the isotype control, normal mouse IgM: sc-3881.

STORAGE

Store at 4° C, ****DO NOT FREEZE****. Stable for one year from the date of shipment. Non-hazardous. No MSDS required.

RESEARCH USE

For research use only, not for use in diagnostic procedures.

PROTOCOLS

See our web site at www.scbt.com for detailed protocols and support products.