

# 26S Proteasome p42A (243): sc-65751

## BACKGROUND

The 26S Proteasome is a large complex involved in the intracellular degradation of proteins in eukaryotes. Ubiquitination by E3 ubiquitin ligases targets proteins for degradation by this complex. The 26S Proteasome plays an important role in the regulation of many biological processes. It is composed of over 30 different subunits and contains at least 2 copies of each subunit. Assembly of this large complex is ATP-dependent. Due to its size, it is fairly unstable and often disassociates into subcomplexes (including a 20S core and two 19S regulatory complexes). The 26S Proteasome p42A (also known as Rpn7 in yeast and S10 in human) is one of at least nine non-ATPase lid subunits of the 19S regulatory complex. It is important in the proper assembly and stability of the 26S Proteasome. The 19S regulatory complex recognizes ubiquitinated proteins, removes the ubiquitin chains and translocates the proteins to the 20S core for degradation.

## REFERENCES

1. Kinyamu, H.K., Chen, J. and Archer, T.K. 2005. Linking the ubiquitin-proteasome pathway to chromatin remodeling/modification by nuclear receptors. *J. Mol. Endocrinol.* 34: 281-297.
2. Sharon, M., Taverner, T., Ambroggio, X.I., Deshaies, R.J. and Robinson, C.V. 2006. Structural organization of the 19S proteasome lid: insights from MS of intact complexes. *PLoS Biol.* 4: 267.
3. Isono, E., Nishihara, K., Saeki, Y., Yashiroda, H., Kamata, N., Ge, L., Ueda, T., Kikuchi, Y., Tanaka, K., Nakano, A. and Toh-e, A. 2007. The assembly pathway of the 19S regulatory particle of the yeast 26S Proteasome. *Mol. Biol. Cell* 18: 569-580.
4. Seong, K.M., Baek, J.H., Yu, M.H. and Kim, J. 2007. Rpn13p and Rpn14p are involved in the recognition of ubiquitinated Gcn4p by the 26S Proteasome. *FEBS Lett.* 581: 2567-2573.
5. Nickell, S., Beck, F., Korinek, A., Mihalache, O., Baumeister, W. and Plitzko, J.M. 2007. Automated cryoelectron microscopy of "single particles" applied to the 26S Proteasome. *FEBS Lett.* 581: 2751-2756.
6. Vernace, V.A., Arnaud, L., Schmidt-Glenewinkel, T. and Figueiredo-Pereira, M.E. 2007. Aging perturbs 26S Proteasome assembly in *Drosophila melanogaster*. *FASEB J.* 21: 2672-2682.
7. Li, X., Kusmierczyk, A.R., Wong, P., Emili, A. and Hochstrasser, M. 2007.  $\beta$  subunit appendages promote 20S Proteasome assembly by overcoming an Ump1-dependent checkpoint. *EMBO J.* 26: 2339-2349.
8. Wang, X., Chen, C.F., Baker, P.R., Chen, P.L., Kaiser, P. and Huang, L. 2007. Mass spectrometric characterization of the affinity-purified human 26S Proteasome complex. *Biochemistry* 46: 3553-3565.
8. Kahana, C. 2007. Ubiquitin dependent and independent protein degradation in the regulation of cellular polyamines. *Amino Acids* 33: 225-230.

## SOURCE

26S Proteasome p42A (243) is a mouse monoclonal antibody raised against 26S Proteasome purified from embryos of *Drosophila melanogaster* origin.

## PRODUCT

Each vial contains 200  $\mu$ g IgG<sub>1</sub> kappa light chain in 1.0 ml of PBS with < 0.1% sodium azide and 0.1% gelatin.

## APPLICATIONS

26S Proteasome p42A (243) is recommended for detection of p42A subunit of the 19S regulatory lid complex of the 26S Proteasome of *Drosophila melanogaster* origin by Western Blotting (starting dilution 1:200, dilution range 1:100-1:1000) and immunoprecipitation [1-2  $\mu$ g per 100-500  $\mu$ g of total protein (1 ml of cell lysate)].

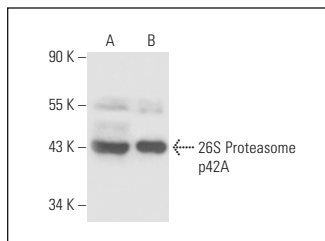
Molecular Weight of 26S Proteasome p42A: 49 kDa.

Positive Controls: *Drosophila* embryo tissue extract

## RECOMMENDED SUPPORT REAGENTS

To ensure optimal results, the following support reagents are recommended: 1) Western Blotting: use m-IgG $\kappa$  BP-HRP: sc-516102 or m-IgG $\kappa$  BP-HRP (Cruz Marker): sc-516102-CM (dilution range: 1:1000-1:10000), Cruz Marker™ Molecular Weight Standards: sc-2035, UltraCruz® Blocking Reagent: sc-516214 and Western Blotting Luminol Reagent: sc-2048. 2) Immunoprecipitation: use Protein A/G PLUS-Agarose: sc-2003 (0.5 ml agarose/2.0 ml).

## DATA



26S Proteasome p42A (243): sc-65751. Western blot analysis of 26S Proteasome expression in *Drosophila* embryo (A) tissue extract and purified *Drosophila* 26S Proteasome (B).

## STORAGE

Store at 4° C, \*\*DO NOT FREEZE\*\*. Stable for one year from the date of shipment. Non-hazardous. No MSDS required.

## RESEARCH USE

For research use only, not for use in diagnostic procedures.

## PROTOCOLS

See our web site at [www.scbt.com](http://www.scbt.com) for detailed protocols and support products.