

α Tubulin (6A204): sc-69969

BACKGROUND

Tubulin is a major cytoskeleton component that has five distinct forms, designated α , β , γ , δ and ϵ Tubulin. α and β Tubulins form heterodimers which multimerize to form a microtubule filament. Multiple β Tubulin isoforms ($\beta 1$, $\beta 2$, $\beta 3$, $\beta 4$, $\beta 5$, $\beta 6$ and $\beta 8$) have been characterized and are expressed in mammalian tissues. $\beta 1$ and $\beta 4$ are present throughout the cytosol, $\beta 2$ is present in the nuclei and nucleoplasm, and $\beta 3$ is a neuron-specific cytoskeletal protein. γ Tubulin forms the gammasome, which is required for nucleating microtubule filaments at the centrosome. Both δ Tubulin and ϵ Tubulin are associated with the centrosome. δ Tubulin is a homolog of the *Chlamydomonas* δ Tubulin Uni3 and is found in association with the centrioles, whereas ϵ Tubulin localizes to the pericentriolar material. ϵ Tubulin exhibits a cell-cycle-specific pattern of localization, first associating with only the older of the centrosomes in a newly duplicated pair and later associating with both centrosomes.

REFERENCES

- Weisenberg, R. 1981. Invited review: the role of nucleotide triphosphate in Actin and Tubulin assembly and function. *Cell Motil.* 1: 485-497.
- Burns, R.G. 1991. α -, β -, and γ -Tubulins: sequence comparisons and structural constraints. *Cell Motil. Cytoskeleton* 20: 181-189.

SOURCE

α Tubulin (6A204) is a mouse monoclonal antibody raised against Sarkosyl-resistant ribbons from sperm axonemes of *Strongylocentrotus purpuratus* (sea urchin) origin.

PRODUCT

Each vial contains 200 μ g IgG₁ kappa light chain in 1.0 ml of PBS with < 0.1% sodium azide and 0.1% gelatin.

APPLICATIONS

α Tubulin (6A204) is recommended for detection of α Tubulin of multiple origin by Western Blotting (starting dilution 1:200, dilution range 1:100-1:1000), immunoprecipitation [1-2 μ g per 100-500 μ g of total protein (1 ml of cell lysate)], immunofluorescence (starting dilution 1:50, dilution range 1:50-1:500) and immunohistochemistry (including paraffin-embedded sections) (starting dilution 1:50, dilution range 1:50-1:500).

Suitable for use as control antibody for α Tubulin siRNA (h): sc-29188, α Tubulin siRNA (m): sc-29189, α Tubulin shRNA Plasmid (h): sc-29188-SH, α Tubulin shRNA Plasmid (m): sc-29189-SH, α Tubulin shRNA (h) Lentiviral Particles: sc-29188-V and α Tubulin shRNA (m) Lentiviral Particles: sc-29189-V.

Molecular Weight of α Tubulin: 55 kDa.

Positive Controls: K-562 whole cell lysate: sc-2203, PC-12 cell lysate: sc-2250 or HL-60 whole cell lysate: sc-2209.

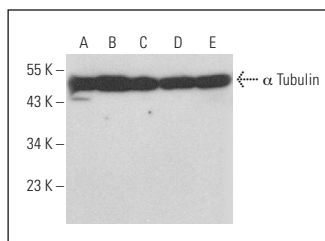
STORAGE

Store at 4° C, ****DO NOT FREEZE****. Stable for one year from the date of shipment. Non-hazardous. No MSDS required.

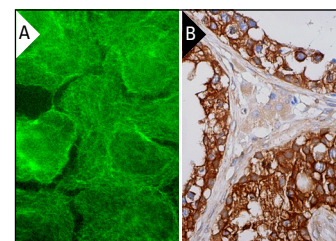
RESEARCH USE

For research use only, not for use in diagnostic procedures.

DATA



α Tubulin (6A204): sc-69969. Western blot analysis of α Tubulin expression in K-562 (A), PC-12 (B), HL-60 (C), C2C12 (D) and Hep G2 (E) whole cell lysates.



α Tubulin (6A204): sc-69969. Immunofluorescence staining of formalin-fixed A-431 cells showing cytoskeletal localization (A). Immunoperoxidase staining of formalin fixed, paraffin-embedded human testis tissue showing cytoplasmic and membrane staining of cells in seminiferous ducts (B).

SELECT PRODUCT CITATIONS

- Krejčova, D., et al. 2009. Modulation of cell proliferation and differentiation of human lung carcinoma cells by the interferon- α . *Gen. Physiol. Biophys.* 28: 294-301.
- Li, Q., et al. 2011. Activator protein-2 α functions as a master regulator of multiple transcription factors in the mouse liver. *Hepatology*. 41: 776-783.
- Hori, K., et al. 2012. Vasopressin V1a receptor is required for nucleocytoplasmic transport of mineralocorticoid receptor. *Am. J. Physiol. Renal Physiol.* 303: F1080-F1088.
- Qu, Y., et al. 2013. c-MYC overexpression overrides TAK1 dependency in efficient tumorigenicity of AKT-transformed cells. *Cancer Lett.* 336: 290-298.
- Shen, P., et al. 2014. KLF9, a transcription factor induced in flutamide-caused cell apoptosis, inhibits AKT activation and suppresses tumor growth of prostate cancer cells. *Prostate* 74: 946-958.
- Miyata, M., et al. 2015. Glucocorticoids suppress inflammation via the upregulation of negative regulator IRAK-M. *Nat. Commun.* 6: 6062.
- Li, J., et al. 2016. Autophagy mediates oral submucous fibrosis. *Exp. Ther. Med.* 11: 1859-1864.
- Kim, H.R., et al. 2017. MicroRNA-1908-5p contributes to the oncogenic function of the splicing factor SRSF3. *Oncotarget* 8: 8342-8355.
- Lee, B.C., et al. 2018. Visfatin promotes wound healing through the activation of ERK1/2 and JNK1/2 pathway. *Int. J. Mol. Sci.* 19: 3642.
- Wang, X., et al. 2019. Function of low ADARB1 expression in lung adenocarcinoma. *PLoS ONE* 14: e0222298.
- Gao, R., et al. 2020. Mep1A enhances TNF α secretion by mast cells and aggravates abdominal aortic aneurysms. *Br. J. Pharmacol.* 177: 2872-2885.

PROTOCOLS

See our web site at www.scbt.com for detailed protocols and support products.