

CD45RO (2Q1392): sc-70712

BACKGROUND

CD45R, also designated CD45 and PTPRC, has been identified as a transmembrane glycoprotein, broadly expressed among hematopoietic cells. Multiple isoforms of CD45R are distributed throughout the immune system according to cell type. These isoforms arise because of alternative splicing of exons 4, 5, and 6. The corresponding protein domains are characterized by the binding of monoclonal antibodies specific for CD45RA (exon 4), CD45RB (exon 5), CD45RC (exon 6) and CD45RO (exons 4 to 6 spliced out). The variation in these isoforms is localized to the extracellular domain of CD45R, while the intracellular domain is conserved. CD45R functions as a phosphotyrosine phosphatase, a vital component for efficient tyrosine phosphorylation induction by the TCR/CD3 complex. The tyrosine phosphatase activity of CD45R is contained within the conserved intracellular domain. Src and Syk family protein tyrosine kinases are utilized by the TCR/CD3 complex to initiate signaling cascades. Several members of these two families, including Lck, Fyn and ZAP-70, have been implicated as physiological substrates of CD45R.

REFERENCES

1. Trowbridge, I.S. 1978. Interspecies spleen-myeloma hybrid producing monoclonal antibodies against mouse lymphocyte surface glycoprotein, T200. *J. Exp. Med.* 148: 313-323.
2. West, K.P., et al. 1986. The demonstration of B cell, T cell and myeloid antigens in paraffin sections. *J. Pathol.* 150: 89-101.
3. Streuli, M., et al. 1987. Differential usage of three exons generates at least five different mRNAs encoding human leukocyte common antigens. *J. Exp. Med.* 166: 1548-1566.
4. Hall, P.A., et al. 1987. New marker of B lymphocytes, MB2: comparison with other lymphocyte subset markers active in conventionally processed tissue sections. *J. Clin. Pathol.* 40: 151-156.
5. Poppema, S., et al. 1987. Monoclonal antibodies (MT1, MT2, MB1, MB2, MB3) reactive with leukocyte subsets in paraffin-embedded tissue sections. *Am. J. Pathol.* 127: 418-429.

CHROMOSOMAL LOCATION

Genetic locus: PTPRC (human) mapping to 1q31.3; Ptprc (mouse) mapping to 1 E4.

SOURCE

CD45RO (2Q1392) is a mouse monoclonal antibody raised against cultured human T cell line-CA-1.

PRODUCT

Each vial contains 200 µg IgG_{2a} kappa light chain in 1.0 ml of PBS with < 0.1% sodium azide and 0.1% gelatin.

STORAGE

Store at 4° C, **DO NOT FREEZE**. Stable for one year from the date of shipment. Non-hazardous. No MSDS required.

APPLICATIONS

CD45RO (2Q1392) is recommended for detection of CD45RO (180-185 kDa) of human origin by Western Blotting (starting dilution 1:200, dilution range 1:100-1:1000), immunoprecipitation [1-2 µg per 100-500 µg of total protein (1 ml of cell lysate)], immunofluorescence (starting dilution 1:50, dilution range 1:50-1:500), immunohistochemistry (including paraffin-embedded sections) (starting dilution 1:50, dilution range 1:50-1:500) and flow cytometry (1 µg per 1 x 10⁶ cells).

Suitable for use as control antibody for CD45 siRNA (h): sc-29251, CD45 shRNA Plasmid (h): sc-29251-SH and CD45 shRNA (h) Lentiviral Particles: sc-29251-V.

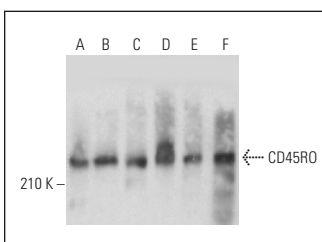
Molecular Weight of CD45RO: 180-220 kDa.

Positive Controls: CCRF-CEM cell lysate: sc-2225, MOLT-4 cell lysate: sc-2233 or HuT 78 whole cell lysate: sc-2208.

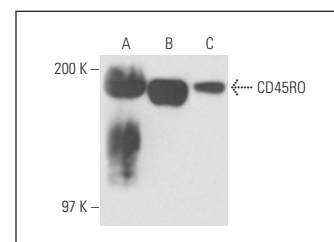
RECOMMENDED SUPPORT REAGENTS

To ensure optimal results, the following support reagents are recommended: 1) Western Blotting: use m-IgGκ BP-HRP: sc-516102 or m-IgGκ BP-HRP (Cruz Marker): sc-516102-CM (dilution range: 1:1000-1:10000), Cruz Marker™ Molecular Weight Standards: sc-2035, UltraCruz® Blocking Reagent: sc-516214 and Western Blotting Luminol Reagent: sc-2048. 2) Immunoprecipitation: use Protein A/G PLUS-Agarose: sc-2003 (0.5 ml agarose/2.0 ml). 3) Immunofluorescence: use m-IgGκ BP-FITC: sc-516140 or m-IgGκ BP-PE: sc-516141 (dilution range: 1:50-1:200) with UltraCruz® Mounting Medium: sc-24941 or UltraCruz® Hard-set Mounting Medium: sc-359850. 4) Immunohistochemistry: use m-IgGκ BP-HRP: sc-516102 with DAB, 50X: sc-24982 and Immunohistomount: sc-45086, or Organo/Limonene Mount: sc-45087.

DATA



CD45RO (2Q1392): sc-70712. Western blot analysis of CD45RO expression in CCRF-CEM (A), HUT 78 (B), WEHI-231 (C), MM-142 (D), BYDP (E) and CTLL-2 (F) whole cell lysates.



CD45RO (2Q1392): sc-70712. Western blot analysis of CD45RO expression in human PBL (A), CCRF-CEM (B) and MOLT-4 (C) whole cell lysates.

SELECT PRODUCT CITATIONS

1. Le Page, A., et al. 2014. Downregulation of inhibitory SRC homology 2 domain-containing phosphatase-1 (SHP-1) leads to recovery of T cell responses in elderly. *Cell Commun. Signal.* 12: 2.

RESEARCH USE

For research use only, not for use in diagnostic procedures.