

COL5A1/2 (6F206): sc-70867

BACKGROUND

The extensive family of COL gene products (collagens) is composed of several chain types, including fibril-forming interstitial collagens (types I, II, III and V) and basement membrane collagens (type IV), each type containing multiple isoforms. Collagens are fibrous, extracellular matrix proteins with high tensile strength and are the major components of connective tissue, such as tendons and cartilage. All collagens contain a triple helix domain and frequently show lateral self-association in order to form complex connective tissues. Several collagens also play a role in cell adhesion, important for maintaining normal tissue architecture and function.

REFERENCES

1. Bateman, J.F., Lamande, S.R. and Ramshaw, J.A. 1996. Collagen Superfamily. In Comper, W.D., ed., Extracellular Matrix, Vol. 2: Molecular Components and Interactions. Amsterdam: Harwood Academic Publishers, 22-67.
2. McCarthy, J.B., Vachhani, B. and Iida, J. 1996. Cell adhesion to collagenous matrices. *Biopolymers* 40: 371-381.
3. Engel, J. 1997. Versatile collagens in invertebrates. *Science* 277: 1785-1786.
4. Cremer, M.A., Rosloniec, E.F. and Kang, A.H. 1998. The cartilage collagens: a review of their structure, organization and role in the pathogenesis of experimental arthritis in animals and in human rheumatic disease. *J. Mol. Med.* 76: 275-288.
5. Boskey, A.L., Wright, T.M. and Blank, R.D. 1999. Collagen and bone strength. *J. Bone Miner. Res.* 14: 330-335.
6. Alberio, L. and Dale, G.L. 1999. Platelet-collagen interactions: membrane receptors and intracellular signaling pathways. *Eur. J. Clin. Invest.* 29: 1066-1076.

CHROMOSOMAL LOCATION

Genetic locus: COL5A1 (human) mapping to 9q34.3, COL5A2 (human) mapping to 2q32.2.

SOURCE

COL5A1/2 (6F206) is a mouse monoclonal antibody raised against acid digested pepsin-soluble Collagen Type V of canine origin.

PRODUCT

Each vial contains 200 µg IgG_{2a} in 1.0 ml PBS with < 0.1% sodium azide and 0.1% gelatin.

STORAGE

Store at 4° C, ****DO NOT FREEZE****. Stable for one year from the date of shipment. Non-hazardous. No MSDS required.

PROTOCOLS

See our web site at www.scbt.com for detailed protocols and support products.

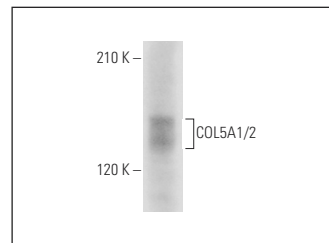
APPLICATIONS

COL5A1/2 (6F206) is recommended for detection of Collagen α1 Type V and Collagen α2 Type V of human, canine, bovine and porcine origin by Western Blotting (starting dilution 1:200, dilution range 1:100-1:1000), immunoprecipitation [1-2 µg per 100-500 µg of total protein (1 ml of cell lysate)] and immunofluorescence (starting dilution 1:50, dilution range 1:50-1:500); non cross-reactive with Collagen Types I, III, and VI or with other connective tissue proteins such as Laminin, Fibronectin and elastin.

Molecular Weight of COL5A1/2 isoforms: 220/140 kDa.

Positive Controls: K-562 whole cell lysate: sc-2203, CCD-1064Sk cell lysate: sc-2263 or Hs68 cell lysate: sc-2230.

DATA



COL5A1/2 (6F206): sc-70867. Western blot analysis of COL5A1/2 expression in K-562 whole cell lysate.

RESEARCH USE

For research use only, not for use in diagnostic procedures.