

Cytokeratin 10 (4A27): sc-70907

BACKGROUND

Cytokeratins comprise a diverse group of intermediate filament proteins (IFPs) that are expressed as pairs in both keratinized and non-keratinized epithelial tissue. Cytokeratins play a critical role in differentiation and tissue specialization and function to maintain the overall structural integrity of epithelial cells. Cytokeratins have been found to be useful markers of tissue differentiation which is directly applicable to the characterization of malignant tumors. Cytokeratins 10 and 13 are present in the cytoskeletal region of a subset of squamous cell carcinomas. Cytokeratin 10 is a heterotetramer of two type I and two type II keratins, is generally associated with keratin 1, and is seen in all suprabasal cell layers including stratum corneum.

REFERENCES

1. Ivanyi, D., et al. 1989. New monoclonal antibodies recognizing epidermal differentiation-associated keratins in formalin-fixed, paraffin-embedded tissue. Keratin 10 expression in carcinoma of the vulva. *J. Pathol.* 159: 7-12.
2. Broekaert, D., et al. 1990. An investigation of cytokeratin expression in skin epithelial cysts and some uncommon types of cystic tumours using chain-specific antibodies. *Arch. Dermatol. Res.* 282: 383-391.
3. van der Velden, L.A., et al. 1993. Cytokeratin expression in normal and (pre) malignant head and neck epithelia: an overview. *Head Neck* 15: 133-146.

CHROMOSOMAL LOCATION

Genetic locus: KRT10 (human) mapping to 17q21.2; Krt10 (mouse) mapping to 11 D.

SOURCE

Cytokeratin 10 (4A27) is a mouse monoclonal antibody raised against Cytokeratins from the human epidermis.

PRODUCT

Each vial contains 200 µg IgG₁ kappa light chain in 1.0 ml of PBS with < 0.1% sodium azide and 0.1% gelatin.

APPLICATIONS

Cytokeratin 10 (4A27) is recommended for detection of Cytokeratin 10 of mouse, rat, human and canine origin by Western Blotting (starting dilution 1:100, dilution range 1:100-1:1,000), immunoprecipitation [1-2 µg per 100-500 µg of total protein (1 ml of cell lysate)] and immunofluorescence (starting dilution 1:50, dilution range 1:50-1:500).

Suitable for use as control antibody for Cytokeratin 10 siRNA (h): sc-35149, Cytokeratin 10 siRNA (m): sc-35150, Cytokeratin 10 shRNA Plasmid (h): sc-35149-SH, Cytokeratin 10 shRNA Plasmid (m): sc-35150-SH, Cytokeratin 10 shRNA (h) Lentiviral Particles: sc-35149-V and Cytokeratin 10 shRNA (m) Lentiviral Particles: sc-35150-V.

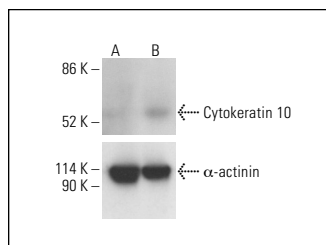
Molecular Weight of Cytokeratin 10: 57 kDa.

Positive Controls: Hep G2 cell lysate: sc-2227, HeLa whole cell lysate: sc-2200 or MCF7 whole cell lysate: sc-2206.

RECOMMENDED SUPPORT REAGENTS

To ensure optimal results, the following support reagents are recommended: 1) Western Blotting: use m-IgGκ BP-HRP: sc-516102 or m-IgGκ BP-HRP (Cruz Marker): sc-516102-CM (dilution range: 1:1000-1:10000), Cruz Marker™ Molecular Weight Standards: sc-2035, UltraCruz® Blocking Reagent: sc-516214 and Western Blotting Luminol Reagent: sc-2048. 2) Immunoprecipitation: use Protein A/G PLUS-Agarose: sc-2003 (0.5 ml agarose/2.0 ml). 3) Immunofluorescence: use m-IgGκ BP-FITC: sc-516140 or m-IgGκ BP-PE: sc-516141 (dilution range: 1:50-1:200) with UltraCruz® Mounting Medium: sc-24941 or UltraCruz® Hard-set Mounting Medium: sc-359850.

DATA



Cytokeratin 10 (4A27): sc-70907. Western blot analysis of Cytokeratin 10 expression in untreated (A) and chemically-treated (B) Hep G2 whole cell lysates. Detection reagent used: m-IgG Fc BP-HRP: sc-525409. α-actinin (H-2): sc-17829 used as loading control. Detection reagent used: m-IgG₁ BP-HRP: sc-525408.

SELECT PRODUCT CITATIONS

1. Cho, K.A., et al. 2012. Interleukin-17 and Interleukin-22 induced proinflammatory cytokine production in keratinocytes via inhibitor of nuclear factor κB kinase-α expression. *Ann. Dermatol.* 24: 398-405.
2. Zhang, Z., et al. 2018. Differential glucose requirement in skin homeostasis and injury identifies a therapeutic target for psoriasis. *Nat. Med.* 24: 617-627.
3. Zhang, J., et al. 2020. The anatomy of the skin of the Chinese tree shrew is very similar to that of human skin. *Zool. Res.* 41: 208-212.

STORAGE

Store at 4° C, **DO NOT FREEZE**. Stable for one year from the date of shipment. Non-hazardous. No MSDS required.

RESEARCH USE

For research use only, not for use in diagnostic procedures.



See **Cytokeratin 10 (LH2): sc-53252** for Cytokeratin 10 antibody conjugates, including AC, HRP, FITC, PE, and Alexa Fluor® 488, 546, 594, 647, 680 and 790.