

L-ficolin (005-19-1): sc-80485

BACKGROUND

L-ficolin, also called ficolin-2, ficolin-B (in mouse and rat), collagen/fibrinogen domain-containing protein 2, serum lectin p35, EBP-37 or hucolin, is a 313 amino acid member of the ficolin lectin family. L-ficolin is a secreted innate immunity pattern recognition molecule expressed in liver and plasma that forms a disulfide-linked homopolymer. This extensive N-terminal disulfide bridge formation can lead to a functional dodecamer polypeptide. L-ficolin binds to DNA ligands expressed by late apoptotic and necrotic cells to increase attachment and engulfment. Variation in L-ficolin concentrations amongst individuals is associated with polymorphisms in the promoter and structural portion of the FCN2 gene. In patients with Behçet's disease (BD) there exists a significant difference in allele frequency for FCN2 gene single nucleotide polymorphisms (SNPs) within the -557 and -64 promoter sites within HLA-B51 positive and HLA-B51 negative subgroups.

REFERENCES

- Lynch, N.J., Roscher, S., Hartung, T., Morath, S., Matsushita, M., Maennel, D.N., Kuraya, M., Fujita, T. and Schwaebler, W.J. 2004. L-ficolin specifically binds to lipoteichoic acid, a cell wall constituent of Gram-positive bacteria, and activates the lectin pathway of complement. *J. Immunol.* 172: 1198-1202.
- Aoyagi, Y., Adderson, E.E., Min, J.G., Matsushita, M., Fujita, T., Takahashi, S., Okuwaki, Y. and Bohnsack, J.F. 2004. Role of L-ficolin/mannose-binding lectin-associated serine protease complexes in the opsonophagocytosis of type III group B streptococci. *J. Immunol.* 174: 418-425.
- Ma, Y.G., Cho, M.Y., Zhao, M., Park, J.W., Matsushita, M., Fujita, T. and Lee, B.L. 2004. Human mannose-binding lectin and L-ficolin function as specific pattern recognition proteins in the lectin activation pathway of complement. *J. Biol. Chem.* 279: 25307-25312.
- Krarup, A., Thiel, S., Hansen, A., Fujita, T. and Jensenius, J.C. 2004. L-ficolin is a pattern recognition molecule specific for acetyl groups. *J. Biol. Chem.* 279: 47513-47519.
- Kuraya, M., Ming, Z., Liu, X., Matsushita, M. and Fujita, T. 2005. Specific binding of L-ficolin and H-ficolin to apoptotic cells leads to complement activation. *Immunobiology* 209: 689-697.
- Herpers, B.L., Immink, M.M., de Jong, B.A., van Velzen-Blad, H., de Jongh, B.M. and van Hannen, E.J. 2005. Coding and non-coding polymorphisms in the lectin pathway activator L-ficolin gene in 188 Dutch blood bank donors. *Mol. Immunol.* 43: 851-855.

CHROMOSOMAL LOCATION

Genetic locus: FCN2 (human) mapping to 9q34.3.

SOURCE

L-ficolin (005-19-1) is a mouse monoclonal antibody raised against recombinant L-ficolin of human origin.

PRODUCT

Each vial contains 200 µg IgG_{2a} kappa light chain in 1.0 ml of PBS with < 0.1% sodium azide and 0.1% gelatin.

APPLICATIONS

L-ficolin (005-19-1) is recommended for detection of L-ficolin of human origin by Western Blotting (starting dilution 1:200, dilution range 1:100-1:1000), immunoprecipitation [1-2 µg per 100-500 µg of total protein (1 ml of cell lysate)] and solid phase ELISA (starting dilution 1:30, dilution range 1:30-1:3000); non cross-reactive with M-ficolin or H-ficolin.

Suitable for use as control antibody for L-ficolin siRNA (h): sc-105603, L-ficolin shRNA Plasmid (h): sc-105603-SH and L-ficolin shRNA (h) Lentiviral Particles: sc-105603-V.

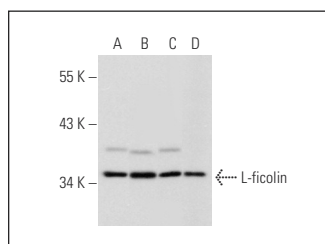
Molecular Weight of L-ficolin: 34 kDa.

Positive Controls: HEK293 whole cell lysate: sc-45136, K-562 whole cell lysate: sc-2203 or MDA-MB-435S whole cell lysate: sc-364184.

RECOMMENDED SUPPORT REAGENTS

To ensure optimal results, the following support reagents are recommended: 1) Western Blotting: use m-IgGκ BP-HRP: sc-516102 or m-IgGκ BP-HRP (Cruz Marker): sc-516102-CM (dilution range: 1:1000-1:10000), Cruz Marker™ Molecular Weight Standards: sc-2035, TBS Blotto A Blocking Reagent: sc-2333 and Western Blotting Luminol Reagent: sc-2048. 2) Immunoprecipitation: use Protein A/G PLUS-Agarose: sc-2003 (0.5 ml agarose/2.0 ml). 3) Immunofluorescence: use m-IgGκ BP-FITC: sc-516140 or m-IgGκ BP-PE: sc-516141 (dilution range: 1:50-1:200) with UltraCruz® Mounting Medium: sc-24941 or UltraCruz® Hard-set Mounting Medium: sc-359850.

DATA



L-ficolin (005-19-1): sc-80485. Western blot analysis of L-ficolin expression in HEK293 (A), MDA-MB-435S (B) and K-562 (C) whole cell lysates and human liver tissue extract (D).

STORAGE

Store at 4° C, **DO NOT FREEZE**. Stable for one year from the date of shipment. Non-hazardous. No MSDS required.

RESEARCH USE

For research use only, not for use in diagnostic procedures.

PROTOCOLS

See our web site at www.scbt.com for detailed protocols and support products.