

CD5L (18.2): sc-81996

BACKGROUND

CD5L (CD5 molecule-like), also known as API6, PRO229, Sp α or SP-ALPHA, is a 347 amino acid secreted protein that belongs to the scavenger receptor cysteine-rich (SRCR) family of leukocyte regulating proteins. Expressed in bone marrow, spleen, thymus, lymph node and fetal liver, CD5L is thought to be involved in regulating the immune system via binding to peripheral monocytes and mediating their activation and overall survival. CD5L has three cysteine-rich domains and, in addition to its role in the immune system, may function to inhibit apoptosis and promote macrophage survival.

REFERENCES

1. Gebe, J.A., Kiener, P.A., Ring, H.Z., Li, X., Francke, U. and Aruffo, A. 1997. Molecular cloning, mapping to human chromosome 1 q21-q23, and cell binding characteristics of Sp α , a new member of the scavenger receptor cysteine-rich (SRCR) family of proteins. *J. Biol. Chem.* 272: 6151-6158.
2. Bikah, G., Lynd, F.M., Aruffo, A.A., Ledbetter, J.A. and Bondada, S. 1998. A role for CD5 in cognate interactions between T cells and B cells, and identification of a novel ligand for CD5. *Int. Immunol.* 10: 1185-1196.
3. Tissot, J.D., Sanchez, J.C., Vuadens, F., Scherl, A., Schifferli, J.A., Hochstrasser, D.F., Schneider, P. and Duchosal, M.A. 2002. IgM are associated to Sp α (CD5 antigen-like). *Electrophoresis* 23: 1203-1206.
4. Online Mendelian Inheritance in Man, OMIM™. 2002. Johns Hopkins University, Baltimore, MD. MIM Number: 602592. World Wide Web URL: <http://www.ncbi.nlm.nih.gov/omim/>
5. Sarrias, M.R., Roselló, S., Sánchez-Barbero, F., Sierra, J.M., Vila, J., Yélamos, J., Vives, J., Casals, C. and Lozano, F. 2005. A role for human Sp α as a pattern recognition receptor. *J. Biol. Chem.* 280: 35391-35398.
6. Arai, S., Shelton, J.M., Chen, M., Bradley, M.N., Castrillo, A., Bookout, A.L., Mak, P.A., Edwards, P.A., Mangelsdorf, D.J., Tontonoz, P. and Miyazaki, T. 2005. A role for the apoptosis inhibitory factor AIM/Sp α /Api6 in atherosclerosis development. *Cell Metab.* 1: 201-213.

CHROMOSOMAL LOCATION

Genetic locus: CD5L (human) mapping to 1q23.1.

SOURCE

CD5L (18.2) is a mouse monoclonal antibody raised against recombinant CD5L of human origin.

PRODUCT

Each vial contains 100 μ g IgG_{2a} kappa light chain in 1.0 ml of PBS with < 0.1% sodium azide and 0.1% gelatin.

STORAGE

Store at 4° C, **DO NOT FREEZE**. Stable for one year from the date of shipment. Non-hazardous. No MSDS required.

RESEARCH USE

For research use only, not for use in diagnostic procedures.

APPLICATIONS

CD5L (18.2) is recommended for detection of CD5L of human origin by Western Blotting (starting dilution 1:200, dilution range 1:100-1:1000), immunoprecipitation [1-2 μ g per 100-500 μ g of total protein (1 ml of cell lysate)] and solid phase ELISA (starting dilution 1:30, dilution range 1:30-1:3000).

Suitable for use as control antibody for CD5L siRNA (h): sc-88774, CD5L shRNA Plasmid (h): sc-88774-SH and CD5L shRNA (h) Lentiviral Particles: sc-88774-V.

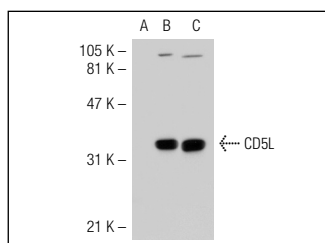
Molecular Weight of CD5L: 38 kDa.

Positive Controls: HL-60 whole cell lysate: sc-2209, IMR-32 cell lysate: sc-2409 or CD5L (h): 293T Lysate: sc-114208.

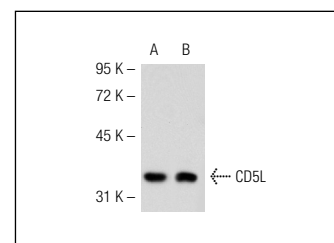
RECOMMENDED SUPPORT REAGENTS

To ensure optimal results, the following support reagents are recommended:
1) Western Blotting: use m-IgG κ BP-HRP: sc-516102 or m-IgG κ BP-HRP (Cruz Marker): sc-516102-CM (dilution range: 1:1000-1:10000), Cruz Marker™ Molecular Weight Standards: sc-2035, TBS Blotto A Blocking Reagent: sc-2333 and Western Blotting Luminol Reagent: sc-2048. 2) Immunoprecipitation: use Protein A/G PLUS-Agarose: sc-2003 (0.5 ml agarose/2.0 ml).

DATA



CD5L (18.2): sc-81996. Western blot analysis of CD5L expression in non-transfected 293T: sc-117752 (A), human CD5L transfected 293T: sc-114208 (B) and IMR-32 (C) whole cell lysates.



CD5L (18.2): sc-81996. Western blot analysis of CD5L expression in 293T (A) and HL-60 (B) whole cell lysates.

PROTOCOLS

See our web site at www.scbt.com for detailed protocols and support products.